

Model:

Motor Home Serial NO.:

Chassis Serial NO.:

23 40 IH

40IH0133748239108

4UZACHFE7PCUH4878

Appliance	Brand	Model	Serial
Microwave	LG	LMVH1711ST	203TATG05433
Refrigerator	LG	LRFXS2503S	205MRPG0J098
Inverter	MAGNUM	52012	GJI - 01329
Air Conditioner (Front)	COLEMAN	47024 - 079	220278129
Air Conditioner (Middle)	COLEMAN	47024 - 079	220278133
Air Conditioner (Rear)	COLEMAN	47024 - 079	220278114
Monitor	ECHOMASTER	1044AHD	210064
Front TV	LG	43UP8000PUR	109MCXYG5578
Bedroom TV	LG	43UP8000PUR	109MXD556133
MID TV	LG	55UQ9000PUD	203RMTT7M249
Washer Dryer	SPLENDIDE	WFL1300XD	562201000500
Dryer	SPLENDIDE	DV6500X	802211002721
Vacuum Cleaner	INTERVAC	RV120	
Front Compartment TV	LG	43UP8000PUR	108MXAY51944
Radio	KENWOOD	775	077X0418
Sirius Radio	SIRIUS	300	WKJDXDCA
Satellite	RTT	0DB	A0607224008225211
Window Awning 1		5320403BH40	5087342
Window Awning 2		5321523BH152	5087331
Slide Topper Awning 1		5420953BL95	5087326
Slide Topper Awning 2		5421513BL151	5087324
Slide Topper Awning 3		5421723BL172	5087322
Slide Topper Awning 4		5422023BL202	5087319
Bedroom DVD	LG	BP350	203MNVW010033
Dishwasher	FISHER & PAYKEL	DD24S19N	UHV553456
Hydra Hot	AQUA - HOT	450D	A460 - 225553
Engine Serial Number			74942052
Fuel Capacity	100		
Fresh Water	100		
Black Water	55		
Gray Water	100		
Heated Floor - Living room		5060839	
Heated Floor - Bedroom		5134531	

Model:

23 40 IH

Motor Home Serial NO.:

40IH0133748239108

Chassis Serial NO.:

4UZACHFE7PCUH4878

Appliance

Brand

Model

Serial

Door Awning

7560115BLED60LH

5070600

Entry Power Step

8811094

CLASS-A

PHIAETTON



TIFFIN

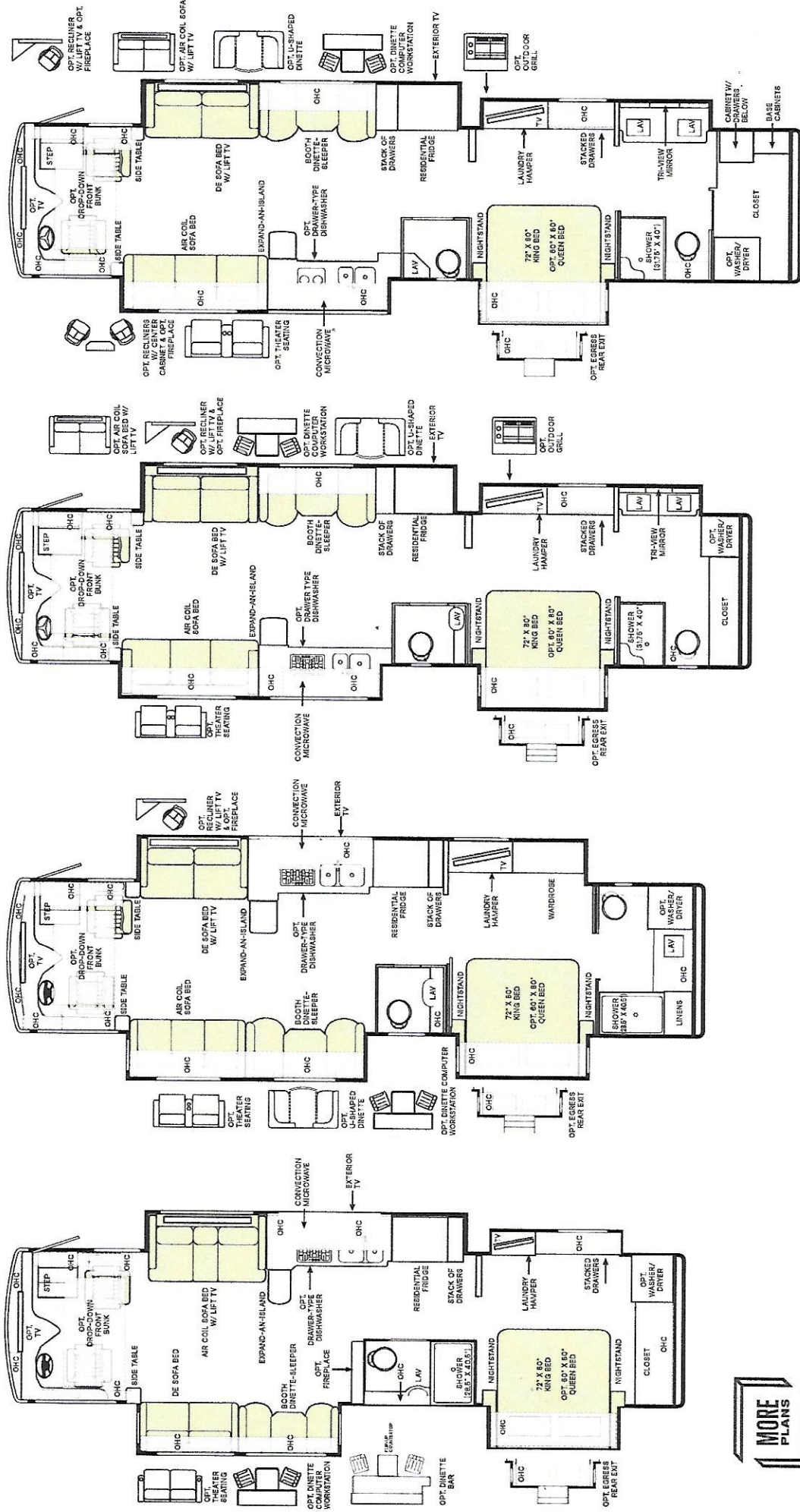
Floor Plans

36 SH

37 BH

40 IH

44 OH



The design of every Phaeton floor plan must meet four essential criteria: Maximum space, Optimal organization, Relaxation plus, and Elegant atmosphere. Tiffin's MORE Plans offer your family the most comfortable layout for life on the road.

If optional furniture combinations are selected, window locations may vary from diagram shown. All options may not be available in every model. Because of progressive improvements and specifications, standard and optional equipment are subject to change without notice or obligation. For a complete and up-to-date list of available options and specifications, visit tiffinmotorhomes.com.

DIMENSIONS	WEIGHTS AND MEASURES				44 OH
	36 SH	37 BH	40 IH	PowerSlide® Chassis (O)	
Overall Length (approx.) ¹	37' 2"	38' 2"	41' 4"	41' 4"	45'
Overall Width ¹	10' 1"	10' 1"	10' 1"	10' 1"	10' 1"
Overall Height	12' 7"	12' 7"	13' 3"	13' 3"	13' 3"
Minimum Garage Height	14'	14'	14'	14'	14'
Interior Height	83"	83"	83"	83"	83"
Interior Width	96"	96"	96"	96"	96"
Square Footage (approx.) ²	360	375	405	440	440
Basement Storage (cubic feet, approx.)	122	122	232	232	232
Wheel Base ³	222"	234"	266"	266"	310"

CAPACITIES	WEIGHT LIMITS				44 OH
	36 SH	37 BH	40 IH	PowerSlide® Chassis (O)	
GAWR—Front (pounds)	14,320	14,320	15,600	15,600	15,600
GAWR—Rear (pounds)	24,000	24,000	24,000	20,000	20,000
GAWR—Tig Axle (pounds)	—	—	—	10,000	10,000
GVWR (pounds)	38,320	38,320	39,600	45,600	45,600
Maximum Trailer Weight (pounds) ⁴	10,000	10,000	10,000	10,000	10,000
Hitch Rating (pounds)	10,000	10,000	10,000	10,000	10,000
GCWR (pounds)	48,320	48,320	49,600	55,600	55,600

CAPACITIES	WEIGHT LIMITS				44 OH
	36 SH	37 BH	40 IH	PowerSlide® Chassis (O)	
Fuel Tank (gallons)	100	100	100	100	100
DEF Tank Capacity (gallons) ⁵	13	13	13	13	10
Fresh Water (gallons)	90	90	100	100	100
Black Water (gallons)	50	50	55	55	55
Grey Water (gallons)	66	66	100	100	100
LPG Tank (gallons) ⁶	36	36	36	36	—

- The approximated coach width and length does not include side-view mirrors and rear ladders.
- Square footage was calculated with the slide-outs fully extended.
- On tag axle coaches, measurement is taken from the center of the steer axle to the centerline between the drive and tag axle.
- Maximum trailer weight is dependent on the leading and towing variables which include the GVWR, GCWR, and GVWR, as well as adequate trailer brakes.
- Diesel Exhaust Fluid (DEF) is the active component used in Selective Catalytic Reduction (SCR) engines to reduce nitrogen oxide emissions by 90% to meet EPA standards.
- LPG tank can only be filled to 80% capacity.

DRIVER'S COMPARTMENT		DRIVER'S COMPARTMENT OPTIONS	
• Ultra-leather Power Driver and Passenger Seats	• Driver-focused Wraparound Dash	• 36 SH	44 OH
• Integrated Seat Belts on Driver and Passenger Seats	• Cupholders on Driver and Passenger Side	0	0
• Passenger Seats	• Built-in Driver and Passenger Consoles	0	0
• Powered Passenger Seat Footrest	• Passenger Side Spyder System Control Panel	0	0
• Tilt and Telescoping Steering Wheel with Integrated Controls	• Driver and Passenger Map Lights	0	0
• Adjustable Accelerator and Brake Pedals	• One-piece Panoramic Windshield	0	0
• Digital Dash Cluster	• Single-motor Intermittent Windshield Wipers	0	0
• Backup Dash Switches	• Automatic LED Headlights	0	0
• Storage Drawer in Dash	• Side-view Cameras ¹	0	0
• Dual Dash Fans	• Color Back-up Camera Monitor	0	0
• 12-Volt Dash Receptacle	• Stereo with AM & FM Radio, CD Player, and Satellite Radio ²	0	0
• USB Dash Receptacles	• Ceiling Mounted Speakers	0	0
	• Auxiliary Start Switch	0	0

- Integrated with side-view mirrors and activated by turn signals.
- Subscription required for satellite radio.
- Drop-down bunk sleeps one comfortably and will decrease overhead storage capacity. Maximum weight limit of drop-down bunk is 250 pounds.

ELECTRICAL		ELECTRICAL OPTIONS	
• Spyder Controls Multiplex System Featuring App Compatibility	• 50-Amp Shore Power with Powered Retract Reel	36 SH	44 OH
• 10C-Kilowatt Onan® Manual Slide-out Generator	• Prep for Satellite Auxiliary Solar Port	S	S
• Generator Side Tray	• Energy Management System	0	0
• 2,000-Watt Pure Sine Inverter with Auto-Gen Start and Transfer Switching ¹	• Blu-ray™ Player	0	0
• Extraordinary™ Air Conditioning System	• Satellite Receiver	S	S
• (3) 15,000-BTU Low Profile Air Conditioners with Heat Pumps and Condensation Drains	• Park Cable and Ground Satellite Hook-up	0	0
	• HD Over-the-air Antenna ²	0	0
	• USB Receptacles Throughout Coach	0	0
	• 12-Volt Breaker Panel	0	0
	• 12-Volt Disconnect Switch	0	0
	• Rotary Disconnect Switches for House Batteries, Chassis Batteries, and Inverter	0	0
	• Ground Fault Circuit Interrupter (GFCI) Outlets at Galley, Lavatories, and Sewer Bay	0	0
	• 110-Volt Exterior Receptacle	0	0
	• Surge Guard® Transfer Switch	0	0
	• USB Receptacles Throughout Coach	0	0

ELECTRICAL		ELECTRICAL OPTIONS	
• Heating and Cooktop Power Source	Liquid Propane (LP) Coach ³	36 SH	44 OH
	All-Electric Coach ⁴	S	S
House Batteries	(6) 6-Volt Flooded Lead-Acid Batteries	0	0
	(6) 6-Volt Extended Cycle AGM Batteries	0	0
	(3) 12-Volt Lithium Batteries	0	0
Battery Slide-out Tray ⁵	(2) 30,000-BTU Ducted Furnaces ⁶	0	0
Heat Sources	(1) 30,000-BTU and (1) 20,000-BTU Ducted Furnaces ⁶	0	0
	Aqua-Hot® 450D Heat Exchanger ⁷	0	0
In-motion Satellite Dish ⁸	Prep for Solar Panels ⁹	0	0
Prewiring for Winegard® Trier™ Satellite	(3) 200-Watt Solar Panels with (1) 30-Amp Controller	0	0
Solar Panels	(6) 200-Watt Solar Panels with (2) 30-Amp Controllers	0	0
	Wi-Fi Booster ¹⁰	0	0
Cellular Signal Booster	NEW	0	0

PLUMBING		PLUMBING OPTIONS	
• Automatic generator start capabilities controlled through Spyder Control Multiplex System.	• Gravity Water Fill	36 SH	44 OH
• Requires subscription.	• Heated Water and Holding Tank System and Sewer Bay Board	D	D
• Propane is used to power the ducted furnaces, the Truma AquaGo™ water heater, and liquid propane cooktops.	• Water Pump Switch Access from Spyder	0	0
• Replaces the ducted furnaces, the Truma AquaGo™ water heater, and liquid propane cooktops with an Aqua-Hot® heat exchanger and induction cooktops. Removes LPG tank. All-electric coaches still require diesel for the engine and either shore power or a generator to operate air conditioning.	• Water Filter	0	0
• Standard with flooded and extended cycle AGM batteries. Not available with lithium batteries.	• Low-point Water Drain Lines	0	0
• Standard with LP coach option.	• Back Holding Tank Flush System	0	0
• Replaces ducted furnaces when all-electric coach option is selected. Aqua-Hot® heat exchanger provides both heated air and water.	• Truma AquaGo™ Comfort Instant Water Heater ¹	0	0
• High-definition programming is not available on a domed satellite antenna unless you subscribe to DISH Network®.	• Aqua-Hot® 450D Heat Exchanger ²	0	0
• Includes docking ports for aftermarket solar panels.		0	0

- Now controllable through the Truma control panel and the Spyder System control panels. Standard with LP coach option.
- Replaces Truma AquaGo™ Comfort instant water heater when all-electric coach option is selected. Aqua-Hot® heat exchanger provides both heated air and water.
- Standard with LP coach option. Not necessary with all-electric coach option.

Because of progressive improvements and specifications, standard and optional equipment are subject to change without notice or obligation. For a complete and up-to-date list of available options and specifications, visit tiffinmotorhomes.com.

EXTERIOR

- Full-body Paint with (4) Layers of Clear Coat
- Seamless One-piece Gel-coat Fiberglass Molded Roof Cap
- One-piece Molded Gel-coat Fiberglass Front and Rear Caps
- Rust Protective Undercoating
- High Performance Protective Film on Front, Cap and Select Areas
- Grid® Powered Door Awning with Integrated LED Lighting
- Grid® Manual Window Awning Package
- Grid® Side-out Toppers
- Steel Basement Construction
- Side-Swinging Exterior Storage Doors with Gas Shocks
- Lockable Chrome Handles on Compartment Doors
- Motion-sensor Lights in Cargo Bay
- 120-Volt and 12-Volt Outlets Inside Cargo Bays
- Charcoal Carpet Cargo Walls
- Pass-through Basement Storage
- Daytime Running Lights
- Docking Lights
- Exterior Patio Light
- Chrome Power Heated Side-View Mirrors with Integrated Cameras
- Exterior TV with Soundbar
- Fast Charge USB ports within

EXTERIOR OPTIONS

- Awning**
- (1) Grid® Side-mounted Powered Patio Awning with Integrated LED Lighting
 - (2) Grid® Roof-mounted Powered Patio Awning with Integrated LED Lighting and Dual Pitch Feature
- Slide Trays¹**
- (1) Manual Storage Compartment Slide-out Tray
 - (2) Manual Storage Compartment Slide-out Trays
- Pull-out Outdoor Grill²**
- Lippert™ On-The-Go™ Ladder³ **NEW**
- ¹ Trays slide out on both sides of motorhome.
- ² Option requires at least (1) storage compartment slide-out tray.
- ³ All units will ship with a Lippert™ On-The-Go™ Prepped Receiver installed.

INTERIOR

- Handcrafted Cabinet Fascias and Doors with Concealed Hinges
- (2) Flat-Panel Televisions¹
- Solid Surface Galley Counter-top
- Treated Carpet in Slide-out Floors
- Handcrafted Slide-out Fascia
- Soft Touch Vinyl Ceiling
- LED Lighting
- Carbon Monoxide Detector
- LPG Leak Detector
- Smoke Detector
- Fire Extinguisher
- Solar and Privacy Shades
- Soft-closing Drawer Slides
- Powered Roof Vents
- Central Vacuum System with VacPan® Automatic Dustpan
- Interior Grab Handle at Entry Door

INTERIOR OPTIONS

- Treated Fabric Suites¹**
- Morocco **NEW**
 - Oceanside **NEW**
 - Capri **NEW**
 - Taupe Hill **NEW**
 - Trail **NEW**
 - Amber Glazed⁴
 - Shadow⁵
 - Pure Linen⁴
 - Vicinity Natural Glazed Porcelain Tile⁶ **NEW**
 - Contassara Glazed Porcelain Tile⁷ **NEW**
- Washer & Dryer**
- Prep for Washer and Dryer
 - Stacked Washer and Dryer
- Gold Heat® Heated Tile Floor⁸**
- Bedroom Egress Door**

¹ Located in living area and bedroom.

² Artist Taupe III, Coastal Sand III and Trend Beige III are no longer available.

³ Belgian and Cocoon are no longer available.

⁴ Amber Glazed and Pure Linen cabinetry stems require Vicinity Natural tile.

⁵ Shadow cabinets must be paired with Contassara tile.

⁶ Vicinity and Articulo White floor tiles are no longer available. Vicinity Natural is not available with Shadow cabinetry stain.

⁷ Vicinity and Articulo White floor tiles are no longer available. Contassara is required with Shadow cabinetry stain.

⁸ No heated tile in rear booth on 37 BH.

CHASSIS AND DRIVETRAIN

- Allison® 3000 MH 6-speed Automatic Transmission with Lock-up Torque Converter
- Aluminum Wheels
- (2) 12-Volt Flooded Lead-Acid Chassis Batteries
- Hydraulic Leveling Jacks
- Rear Radiator
- Front Disc Brakes and Rear Drum Brakes
- Full Air Brake System with Automatic Slack Adjusters
- Three-stage Compress on Brake **UPDATED**
- Manual Parking Brake
- Dual Fuel Fill Capable
- Tire Pressure Monitoring
- Adaptive Cruise Control
- Automatic Traction Control
- Collision Mitigation with Forward Warning and Active Braking
- Electronic Stability Control

CHASSIS AND DRIVETRAIN OPTIONS

- Chassis**
- Freightliner® XCM Modular Rail Rear Engine Diesel Chassis
 - Freightliner® XCR XSH Raised Rail Rear Engine Diesel Chassis
 - PowerSlide® Rear Engine Diesel Chassis
 - Cummins® I9 380 HP Diesel Engine with 1,150 lb-ft Torque²
 - Cummins® I9 450 HP Diesel Engine with 1,250 lb-ft Torque³
 - 160-Amp Alternator
 - 210-Amp Alternator⁴
 - 240-Amp Alternator⁴
 - Front and Rear 275/80R 22.5 Tires
 - Front and Rear 295/80R 22.5 Tires
 - Freightliner® V-Series VFS I-beam Front Suspension
 - ZF Independent Front Suspension
 - Freightliner® V-Series V-Ride Rear Suspension⁵
 - Reyco® Granning® Air Ride Rear Suspension⁵
 - Reyco® Tuned Sachs® Shock Absorbers⁵
 - Custom Tuned Koni Shock Absorbers⁴
- Alternator**
- 160-Amp Alternator
 - 210-Amp Alternator⁴
 - 240-Amp Alternator⁴
- Tires**
- Front and Rear 275/80R 22.5 Tires
 - Front and Rear 295/80R 22.5 Tires
- Suspension**
- Freightliner® V-Series VFS I-beam Front Suspension
 - ZF Independent Front Suspension
 - Freightliner® V-Series V-Ride Rear Suspension⁵
 - Reyco® Granning® Air Ride Rear Suspension⁵
 - Reyco® Tuned Sachs® Shock Absorbers⁵
 - Custom Tuned Koni Shock Absorbers⁴
- Shocks**
- Reyco® Tuned Sachs® Shock Absorbers⁵
 - Custom Tuned Koni Shock Absorbers⁴
- Steerable Tag Axle**
- Standard on both Freightliner® and PowerSlide® Chassis.
 - Now available on both Freightliner® and PowerSlide® Chassis option.
 - Peak horsepower achieved at 2,200 RPM. Peak torque achieved at 1,200 RPM.
 - Peak horsepower achieved at 2,100 RPM. Peak torque achieved at 1,400 RPM.
 - Standard on Freightliner® Chassis. Not available on PowerSlide® Chassis option.

DINETTE AND LIVING AREA

- Driver Side Dinette**
- Ultraleather Booth Dinette-Sleeper¹ **UPDATED**
 - Dinette Computer Workstation² **UPDATED**
 - Dinette Bar
 - Ultraleather U-shaped Dinette
 - Overhead Dinette Cabinets
 - Ultraleather DE Sofa Bed³
 - Ultraleather Air Coil Sofa Bed⁴
 - Theater Seating
 - (2) Ultraleather Recliners with Center Cabinet
 - (2) Ultraleather Recliners with Center Cabinet and Fireplace⁵
 - Fireplace
 - Ultraleather Booth Dinette-Sleeper¹ **UPDATED**
 - Dinette Computer Workstation² **UPDATED**
 - Ultraleather U-shaped Dinette
 - Overhead Dinette Cabinets
 - Ultraleather DE Sofa Bed with Lift TV³
 - Ultraleather Air Coil Sofa Bed with Lift TV⁴
 - Ultraleather Recliner and Lift TV
 - Ultraleather Recliner and Lift TV with Fireplace⁵
- Driver Side Furniture**
- Ultraleather Booth Dinette-Sleeper¹ **UPDATED**
 - Dinette Computer Workstation² **UPDATED**
 - Ultraleather U-shaped Dinette
 - Overhead Dinette Cabinets
 - Ultraleather DE Sofa Bed with Lift TV³
 - Ultraleather Air Coil Sofa Bed with Lift TV⁴
 - Ultraleather Recliner and Lift TV
 - Ultraleather Recliner and Lift TV with Fireplace⁵
- Passenger Side Dinette**
- Ultraleather Booth Dinette-Sleeper¹ **UPDATED**
 - Dinette Computer Workstation² **UPDATED**
 - Ultraleather U-shaped Dinette
 - Overhead Dinette Cabinets
 - Ultraleather DE Sofa Bed with Lift TV³
 - Ultraleather Air Coil Sofa Bed with Lift TV⁴
 - Ultraleather Recliner and Lift TV
 - Ultraleather Recliner and Lift TV with Fireplace⁵
- Passenger Side Furniture**
- Ultraleather Booth Dinette-Sleeper¹ **UPDATED**
 - Dinette Computer Workstation² **UPDATED**
 - Ultraleather U-shaped Dinette
 - Overhead Dinette Cabinets
 - Ultraleather DE Sofa Bed with Lift TV³
 - Ultraleather Air Coil Sofa Bed with Lift TV⁴
 - Ultraleather Recliner and Lift TV
 - Ultraleather Recliner and Lift TV with Fireplace⁵

¹ Piece of furniture sleeps one comfortably. Now with lift-up seat storage access. Includes forward facing seat belts.

² The printer bump-out was removed for more leg room. The keyboard and printer trays have been converted to a drawer and a fixed shelf to maximize storage.

³ Piece of furniture sleeps one comfortably.

⁴ Piece of furniture sleeps two comfortably. Cannot option air coil sofa on both driver and passenger sides.

⁵ Cannot option a fireplace on both driver and passenger sides.

Specifications, Features, and Options (Cont'd)

KEY : S : Standard Feature | O : Optional Feature; Additional costs may apply | D : Dependent; Availability is dependent on selection of another option | - : Not Available

KITCHEN

- * Stainless Steel Convection Microwave with Exterior Venting
- * Double Bowl Kitchen Sink with Single Lever Faucet and Pull-down Sprayer
- * Built-in Soap Dispenser
- * Galley Overhead with Pull-out Drawers
- * Panoramic Galley Window
- * Expand-A-Island
- * LED Countertop Lighting
- * Full Tile Backsplash
- * Solid Surface Galley Countertop, Sink, and Cooktop Cover

KITCHEN OPTIONS

	36 SH	37 BH	40 IH	44 OH
Refrigerator				
22-Cubic Foot Stainless Steel Residential Refrigerator with French Doors and Bottom Freezer ¹	S	-	-	-
25-Cubic Foot Stainless Steel Residential Refrigerator with French Doors and Bottom Freezer ¹	-	S	S	S
Cooking Appliances				
Three-Burner Liquid Propane Cooktop ²	D	D	D	-
Two-Burner Induction Cooktop ³	D	D	D	S
Drawer-style Dishwasher	O	O	O	O

¹ Refrigerator volume is approximated.
² Standard with LP Coach option.
³ Replaces three-burner liquid propane cooktop when all-electric coach option is selected.

BATHROOM

- * Solid Surface Levatory Top
- * Handed Shower Head with Side Bar
- * Shower Skylight
- * Shower LED Light with Sliding Cover
- * Towel and Toilet Paper Holders
- * Roof Vent Fan

BATHROOM OPTIONS

	36 SH	37 BH	40 IH	44 OH
Number of Bathrooms				
(1) Bathroom	S	-	-	-
(1) Bathroom and (1) Half-bath ²	-	S	S	S
(1) Porcelain Master Bathroom Sink	S	S	-	-
(2) Porcelain Master Bathroom Sinks	-	-	S	S
(1) Gravity Flush Toilet	S	-	-	-
(1) Gravity Flush Toilet and (1) Macerator Toilet	-	S	S	S
Shower				
One-Piece Molded Fiberglass Shower (28.5" x 40.5")	S	S	-	-
One-Piece Molded Fiberglass Shower (31.75" x 40")	-	-	S	S
Master Bathroom Medicine Cabinet				
Mirrored Medicine Cabinet	S	S	-	-
Medicine Cabinet with Tri-view Vanity Mirror	-	-	S	S

¹ Added foot ledge and removed molded-in shower seats to allow for more room (36 SH and 37 BH only).
² All half-baths contain a toilet and a solid surface countertop with a single porcelain sink.

BEDROOM

- * Under Bed Storage
- * Bedside Windows
- * Overhead Cabinet with Headboard
- * Bed Comforter with Throw Pillows
- * Strategically Placed, Handcrafted Privacy Door
- * Nightstands with Solid Surface Tops
- * Mounted Flat-panel TV
- * Centralized Entertainment Center¹
- * Ceiling Fan
- * Laundry Hamper

BEDROOM OPTIONS

	36 SH	37 BH	40 IH	44 OH
Bedroom Storage				
Memory Foam King Mattress (72" x 80")	S	S	S	S
Memory Foam Queen Mattress (60" x 80")	O	O	O	O
Floor-to-ceiling Closet Space	S	-	S	-
Wardrobe with Drawers Underneath	-	S	-	-
Walk-in Closet	-	-	-	S
Safe	O	O	O	O

¹ Houses Blu-ray™ player, satellite receiver, and cable TV hook-up.