

SOLAR STANDARD
ON ALL UNITS

ULTRA LITE & NANO TRAVEL TRAILERS



ULTRA LITE & NANO
TRAVEL TRAILERS

APEX


COACHMEN

Emerald Rated





190 RBS

APEX

NANO OFF GRID

HIT THE ROAD TO ADVENTURE WITH
APEX'S LIGHT-WEIGHT TOWABLE RVS



190 RBS



190 RBS



208 BHS

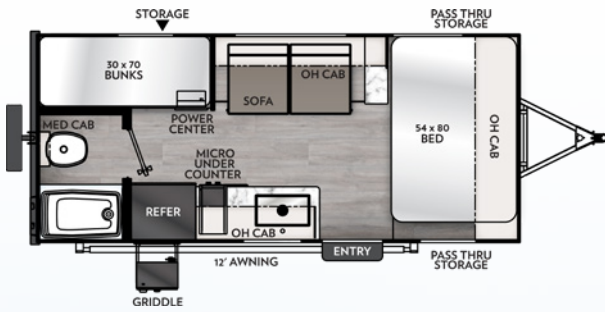
LIGHT & FUN

Travel is easy with Apex style and comfort. These narrow-body trailers are ideal for towing with half ton trucks and most smaller SUVs, with weights ranging from 3,000 lbs. up to 4,500 lbs. All Nano floor plans are designed with rich, warm interiors, full-sized bathrooms, contemporary cabinetry, fabrics and flooring.

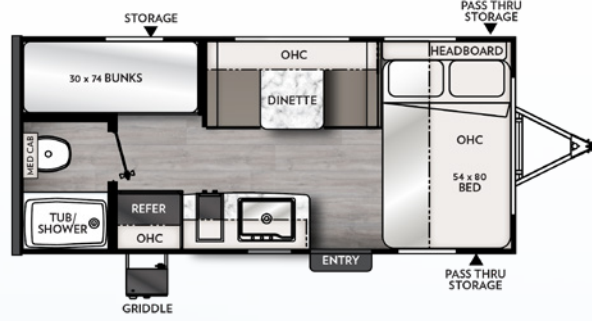
The 186 BH, 203 RBK, and 208 BHS come standard with a 60" x 80" queen bed, or you can add an optional Murphy Bed with Jack Knife sofa.



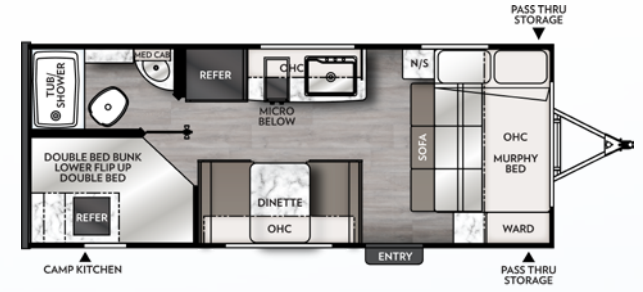
190 RBS



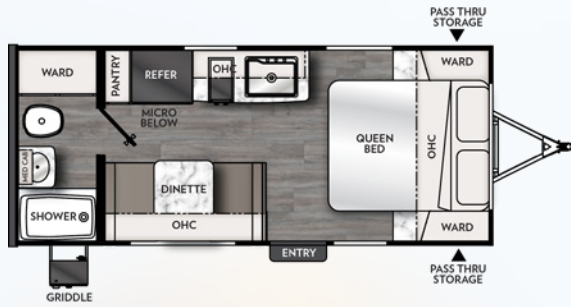
184 BH



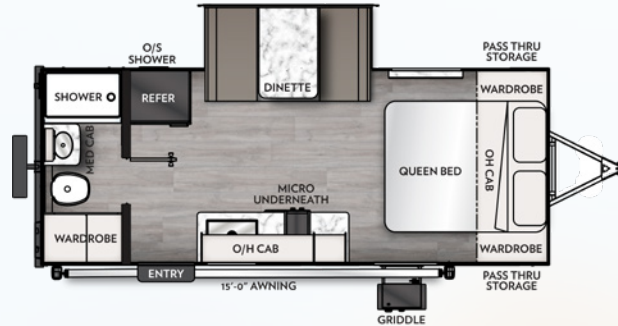
185 BH



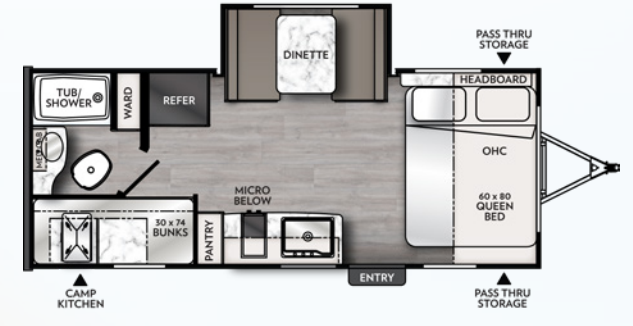
186 BH



187 RB



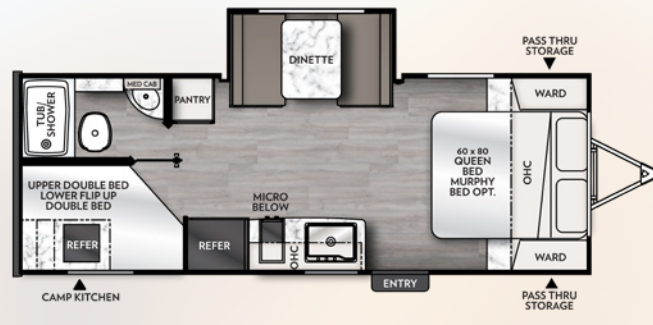
190 RBS



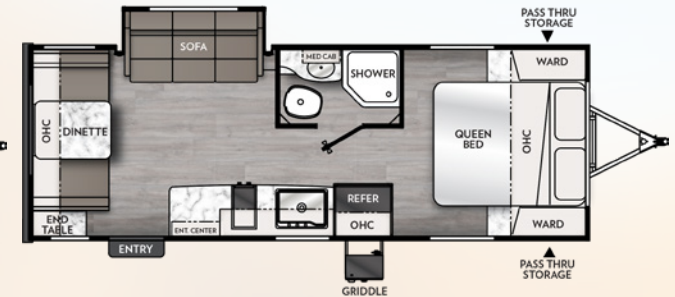
194 BHS



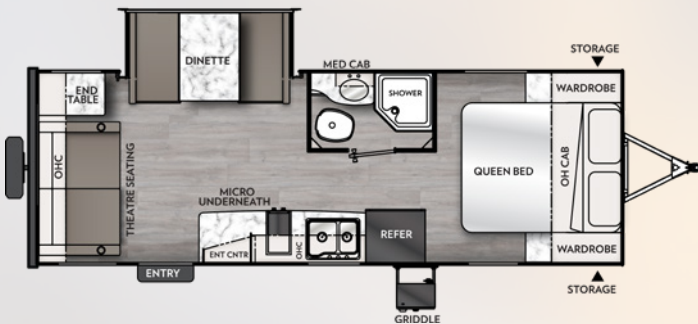
203 RBK



208 BHS



213 RDS



221 RLS

APEX NANO	184 BH	185 BH	186 BH	187 RB	191 RBS	194 BHS	203 RBK	208 BHS	213 RDS	221 RLS
Hitch Weight	414	384	432	390	461	454	470	504	494	503
Carrying Capacity	1,508	1,234	1,074	1,342	1,030	910	2,084	1,712	1,806	1,806
UVW	3,466	3,202	3,597	3,246	3,670	3,784	3,916	4,198	4,115	4,194
GVWR	4,700	4,700	4,700	4,700	4,700	4,800	6,000	6,000	6,000	6,000
Ext. Length (Incl. Bumper to Hitch)	20' 7"	20' 7"	22' 11.5"	21' 5"	22' 7.5"	22' 8"	23' 5"	24' 11"	25' 2"	25' 2"
Ext. Height (Incl. A/C)	10' 2"	9' 10"	9' 9"	9' 10"	10' 2"	9' 10"	9' 11"	9' 11"	9' 11"	9' 11"
Int. Height (Coach)	77"	77"	77"	77"	77"	77"	77"	77"	77"	77"
Awning Length	12'	12'	15'	12'	15'	14'	15'	14'	15'	15'
Fresh Water Capacity (gal.)	52	52	52	52	52	52	52	52	52	52
Grey Water Capacity (gal.)	27	27	27	27	35	27	35	35	35	35
Waste Water Capacity (gal.)	27	27	27	27	35	27	35	35	35	35

Refer to chart descriptions on back cover.



APEX

ULTRALITE

OUR MODERN INTERIORS ARE BEAUTIFULLY PAIRED WITH AN INNOVATIVE USE OF SPACE TO MAKE CAMPING COMFORTABLE AND EASY.



SELECT MODELS



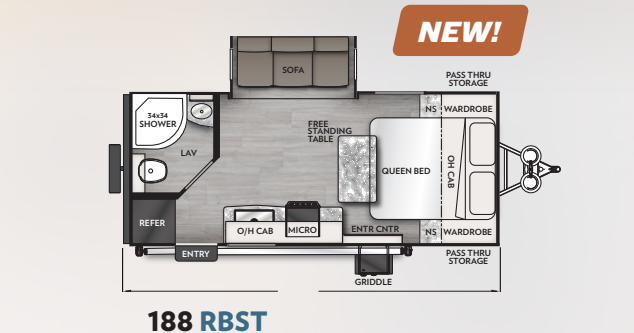
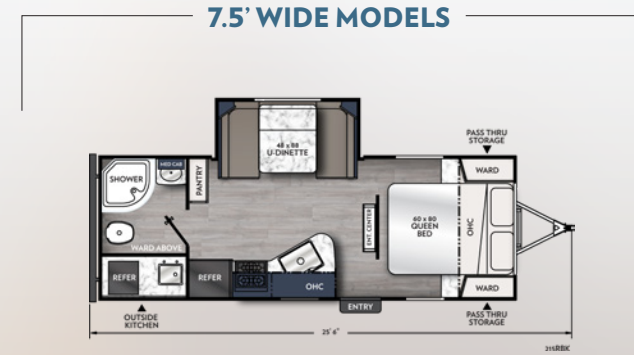
251 RBK

LIGHTWEIGHT ADVENTURE

An Apex Travel Trailer does not just start off as a frame, walls and roof... it begins with an idea! Our belief is that getting the little things right is a BIG THING! The Apex UltraLite is not like other lightweight trailers. It is much smarter because we set new, higher standards for this innovative, truly lightweight trailer.

The 251 RBK is perfect for couples who like to kick back and relax with all the amenities of home. It's open concept living at its finest, with comfortable seating located directly across from the TV for a great view, and a booth dinette for those game nights.

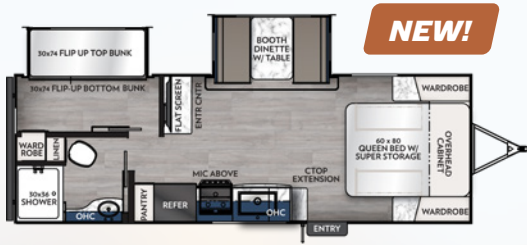
The outside kitchen is the perfect spot to grab some food and keep the fun going.



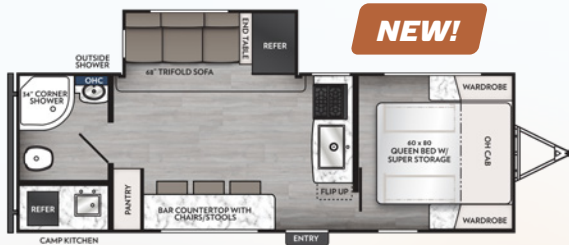
SELECT MODELS

7.5' WIDES

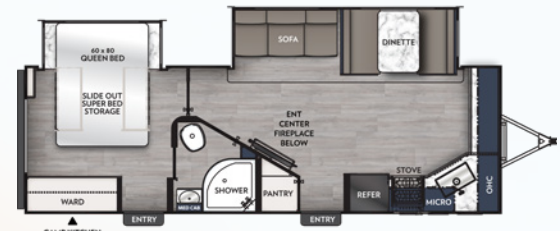
Apex	215 RBK	245 BHS	188 RBST
Hitch Weight	446	578	446
Carrying Capacity	2,135	1,914	2,135
UVW	4,365	4,586	4,365
GVWR	6,500	6,500	6,500
Ext. Length (Incl. Bumper to Hitch)	25' 6"	27' 7"	25' 6"
Ext. Height (Incl. A/C)	10' 2"	10' 2"	10' 2"
Int. Height (Coach)	78"	78"	78"
Awning Length	13'	18'	13'
Fresh Water Capacity (gal.)	52	52	52
Grey Water Capacity (gal.)	35	35	35
Waste Water Capacity (gal.)	35	35	35



241 BHS



242 BARY



243 FKS



251 RBK



256 BHS



264 RKS



265 RBSS



266 BHS



284 BHSS



291 TBSS



293 RLDS



300 BHS



Apex 8' WIDES	241 BHS	242 BARY	243 FKS	251 RBK	256 BHS	264 RKS	265 RBSS	266 BHS	284 BHSS	291 TBSS	293 RLDS	300 BHS
Hitch Weight	578	587	810	570	694	718	734	934	722	670	832	672
Carrying Capacity	1,914	1,938	1,654	2,016	2,128	1,618	1,948	1,520	1,578	1,510	1,360	1,625
UVW	4,586	4,891	5,906	4,984	5,472	5,982	5,652	6,080	6,017	6,090	6,440	5,975
GVWR	6,500	7,000	7,600	7,000	7,600	7,600	7,600	7,600	7,600	7,600	7,800	7,600
Ext. Length (Incl. Bumper to Hitch)	27' 7"	26' 2"	29' 5"	29'	30' 1"	31' 10"	30' 5"	32' 11"	32' 7"	33' 6"	34'	34' 5"
Ext. Height (Incl. A/C)	10' 2"	10' 5"	10' 7"	10' 1"	10' 5"	10' 4"	10' 6"	10' 5"	10' 7"	11' 3"	10' 7"	10' 1"
Int. Height (Coach)	78"	78"	78"	78"	78"	78"	78"	78"	78"	78"	78"	78"
Awning Length	18'	15'	20'	16'	16'	18'	18'	20'	18'	18'	18'	18'
Fresh Water Capacity (gal.)	52	50	50	50	50	50	50	50	50	50	50	50
Grey Water Capacity (gal.)	35	35	70	35	70	70	70	35	70	35	70	35
Waste Water Capacity (gal.)	35	35	35	35	35	35	35	35	35	35	35	35

APEX STANDARDS AND OPTIONS

	UL	NANO
VALUE PACKAGE (MANDATORY)		
◀ Vacuum-bonded Laminated Dual Azdel Fiberglass Side Walls	x	x
◀ Vacuum-bonded Laminated Dual Azdel Fiberglass Rear Wall	x	x
◀ Vacuum-bonded Laminated Crowned Roof	x	x
◀ Laminated Aluminum Framed Floor	x	x
◀ Fiberglass Front Cap w/LED Lighting and Window	x	x
◀ Alumina-cage Construction	x	x
◀ White Fiberglass Exterior Sidewalls	x	x
◀ Front Stone Guard	x	x
◀ Enclosed Underbelly w/Forced Air Heat	x	SM
◀ Aluminum Wheels	x	x
◀ Spare Tire	x	x
◀ Slide Topper Prep	x	
◀ Back-up Camera Mount	x	x
◀ Power Tongue Jack	x	
◀ Stabilizer Jacks [4]	x	x
◀ LP Port	x	x
◀ 200 Watt Solar Panel w/ 30 AMP Control Charger	x	x
◀ 15k BTU A/C [Ducted on 8' wide]	x	x
◀ Ducted/Direct Vent Furnace [Floor Plan Specific]	x	x
◀ On-Demand Tankless Water Heater [48,000 BTU]	x	x
◀ Hot/Cold Outside Shower	x	x
◀ Black Tank Flush Kit	x	x
◀ Power Awning w/Lighting	x	x
◀ Swing Away Assist Handle	x	x
◀ Radius Glass Friction Hinge Entry Door	x	x
◀ Solid Step	x	x
◀ Slam Latch Baggage Door Catches	x	
◀ LED Motion Sensor Light in Exterior Storage Area	x	
◀ Hard Valances w/Night Shades Throughout	x	x
◀ LED Interior Lighting Throughout	x	x
◀ Microwave	x	x
◀ Lighted, Flush-mount, 3-Burner High Output Range w/ Air fryer	x	
◀ 8 Cu. Ft. 12V Refrigerator	x	x
◀ Stainless Steel Single Bowl Sink w/Flush-mount Cover	x	x
◀ Access Doors Under Dinette	SM	SM
◀ Interior Convenience Center	x	x
◀ Digital TV Antenna w/Cable Hook-ups and WiFi Capability	x	x
◀ USB Charging Station	x	x
◀ TV	x	
◀ Hide-A-Bed Sofa [Deep slides only]	x	
◀ Tub Surround	x	x
◀ Skylight in Bath	x	x
◀ Mattress with Cover	x	x

	UL	NANO
INTERIOR AND DÉCOR		
◀ Casino Bisque Cabinetry	x	x
◀ Shaker Cabinet Door Frames w/ Magnetic Catch	x	x
◀ Stile and Rail Cabinet Front Construction	x	x
◀ One-Piece Seamless Edge Countertops	x	x
◀ Congoleum Residential Flooring	x	x
◀ Overhead Bedroom Cabinets w/Side Wardrobes	x	x
◀ Hard Valances w/Night Shades	x	x
◀ Pedestal Dinette Table	x	x
◀ Large Oversized Booth or U-shaped Dinette w/Sliding Door Storage Access	x	
◀ 68" Residential Sofa [Most Models]	x	SM
◀ LP Leak Alarm	x	x
◀ Fire Extinguisher	x	x
◀ Smoke Alarm	x	x
◀ Carbon Monoxide Detector	x	x
◀ Super Bed Storage [Select Models]	x	
ELECTRICAL / HEATING/AC		
◀ Furnace - Forced Air/Ducts Per Floorplan	x	x
◀ 15k BTU A/C [Ducted on 8' wide]	x	x
◀ 55 Amp Power Center with Auto-detect, Lithium-compatible	x	x
◀ Outside Receptacle GFI	x	x
◀ 200 Watt Solar Panel w/ 30 AMP Control Charger	x	x
◀ Wireless Bluetooth Speaker	x	x
◀ Detachable Marine Style Power Cord	x	x
◀ USB Chargers	x	x
◀ 50 Amp Service Standard [Select Models]	SM	
GALLEY		
◀ 8 Cu. Ft. 12V Refrigerator	x	x
◀ Air Fryer	x	
◀ Flush-mount 2-Burner Stovetop		x
◀ Flush-mount 3-Burner Stovetop	x	
◀ Power LED Lighted Range Hood	x	
◀ Microwave	x	x
◀ Stainless Steel Single Bowl Sink w/Flush-mount Cover	x	x
◀ One-Piece Seamless Edge Countertops	x	x
◀ Matte Black Hardware	x	x
BATH AND WATER		
◀ On-Demand Tankless Water Heater [48,00 BTU]	x	x
◀ Power Bath Vent	x	x
◀ Washer/Dryer Prep	SM	
◀ Water Heater Bypass Valve	x	x
◀ On-Demand Water Pump	x	x

	UL	NANO
◀ Below Floor Low Point Drains	x	x
◀ Foot Flush Toilet	x	x
◀ Tub Surround	x	x
◀ Glass Shower Door	SM	SM
◀ Hand-crafted Wood Medicine Cabinet	x	x
EXTERIOR/ CONSTRUCTION		
◀ Alumina-Cage Construction	x	x
◀ Vacuum-bonded, Aluminum Trussed Roof w/Dicor Crossflex Roof Membrane [R-11 - 7½' wide, R-14 - 8' wide]	x	x
◀ Vacuum-bonded Laminated Dual Azdel Fiberglass Sidewalls [R-11]	x	x
◀ Vacuum-bonded Dual Azdel Fiberglass Rear Wall	x	x
◀ Laminated Aluminum Framed Floor [R-11]	x	x
◀ Corrosion Resistant Powder Coated Frame	x	x
◀ I-beam Chassis Construction	x	x
◀ Heated and Enclosed Underbelly w/Forced Air [Dual Axle Only]	x	SM
◀ Gutter Rail	x	x
◀ Dual 20 Lb. LP Tanks w/Cover	x	x
◀ Dual Battery Tray	x	x
◀ Solid Step	x	x
◀ Tinted Safety Glass Radius Windows	x	x
◀ Radius Glass Friction Hinge Entry Door	x	x
◀ Dead Bolt Lock	x	x
◀ Radius Slam Latch Baggage Doors	x	
◀ Break Away Switch	x	x
◀ EasyLube	x	x
◀ Radial Tires	x	x
◀ Frame Receiver Prep	SM	SM
◀ Battery Disconnect Switch	x	x
◀ Schwintek/Rack and Pinon Slide Room System [Per Floor Plan]	x	x
◀ Cast Iron Griddle and Prep Bar	x	x
◀ On-The-Go Ladder Prep	x	x
OPTIONS		
◀ Frameless Dark Tint Windows	x	
◀ Stargazer		x
◀ 50 Amp Service w/Second [Forced] 13.5K BTU A/C [Standard 243 FKS and Larger]	x	
◀ 12v Heat Pads		x
◀ Theater Seating	SM	
◀ Goodyear® All-Terrain Tires		x
◀ Murphy Bed		SM

APEX CONSTRUCTION

Construction Features

- 3M Breathable graphics
- Tinted, safety glass windows
- Welded aluminum structure, vacuum-bonded sidewalls and rear wall, laminated floor
- Aluminum reinforced vacuum-bonded roof
- Dicor Crossflex roofing membrane
- Azdel composite exterior/interior sidewall and rear wall panels
- Aerodynamic front profile with fiberglass front cap and integrated window
- [2] 20 lb. LP tanks
- Insulated slam latch doors with magnetic hold-ups (N/A Nanos)
- Smooth exterior fiberglass skin
- Aluminum framed openings
- Fully enclosed, heated underbelly (Double axle models)
- Fully welded tubular aluminum floor structure
- Slide system
- Residential Style linoleum flooring
- Powder E-coated, welded I-beam frame with full-depth crossmembers
- SuperLube axles
- Radial tires

Apex features the combination of environmentally friendly Azdel wall boards inside, and out. Using Alumaticage Construction maximizes strength while minimizing weight. These Ultralite Travel Trailers are designed for towing by today's half-ton trucks, and SUVs. From 18' to 34'. All units are available under 6,800 lbs.



Fiberglass Front Cap

- ¾ Front fiberglass cap for superior strength
- Automotive glass front window with superior UV protection
- Front stone guard
- Integrated LED accent lights
- Vacuum Bonded Sidewalls and Roof
- Stronger construction
- Lighter weight



Apex is proud to be one of three products to receive the **Emerald Level Certification**, the highest rated level possible.

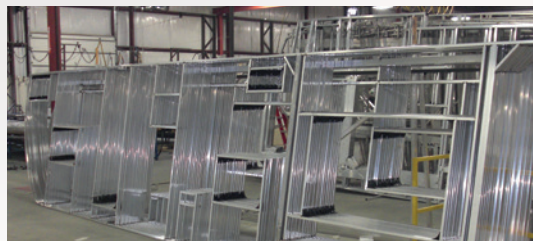
As a Certified Green RV, APEX utilizes effective production techniques in combination with healthy materials, plus efficient usage of energy and water to produce a high quality RV with less environmental impact.

Check us out at:
coachmenrv.com/travel-trailers/apex

LIGHTWEIGHT DURABILITY



Lower Center of Gravity
for Better Towability



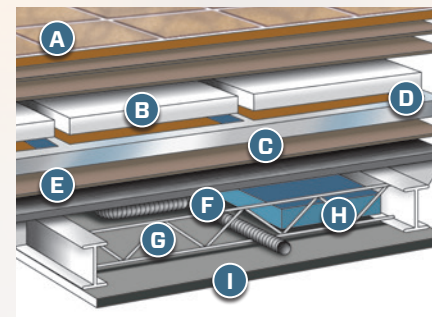
Welded Aluminum Framing

Durable, lightweight aluminum cage – individually framed cut-outs to make for stronger sidewalls and reduce water leaks.



Aluminum Reinforced Vacuum-bonded Roof

The aluminum framed, laminated roof is lighter than the competition, rigid and fully walkable.



Six Layer Laminated Floor

- A Residential durable insulated floor covering
- B Double layer Luan plywood top decking
- C Welded aluminum frame
- D Block foam structural insulation
- E Luan plywood bottom decking
- F Darco waterproof floor wrap
- G Cross member support
- H Holding tanks
- I Heated and enclosed underbelly (Double axle models)

EXPERIENCE YOUR OWN ULTRALITE ADVENTURE

Versatile Apex Travel Trailers provide a perfect home base, wherever the road leads.



THE ENTIRE APEX LINEUP IS PERFECT FOR SMALLER TOW VEHICLES.

APEX

423 N. Main Street · P.O. Box 30 · Middlebury, IN 46540. To learn more about Coachmen RV and our products and see how Coachmen is making the easy life easier, visit <https://coachmenrv.com/brand/apex>



Coachmen Interactive Mobile Manuals

Download your Coachmen mobile app or visit our dynamic online manual to enhance your ownership experience. These interactive options provide incredible ease and insight into use, maintenance and enjoyment of your Coachmen product. Ranging from "How-To" videos, pictures and illustrations of various components, systems and features to fully searchable content and downloadable PDFs for individual component owner's manuals, answers are always just a click away.

FREE MEMBERSHIP
to Forest River Owners' Group

www.forestriverfrog.com



Learn More:
Scan this barcode using a QR reader on your smart phone to learn more about Forest River.



WWW.COACHMENRV.COM/APEX

YOUR DEALER



PRE-DELIVERY INSPECTION FACILITY

20,000 square feet of quality assurance. The bare essentials for a premium product. This state-of-the-art facility gives immediate daily feedback to production for quality assurance in every unit built.



24/7 EMERGENCY ROADSIDE ASSISTANCE WITH VEHICLE PURCHASE*

TOWING
JUMP-STARTS
TIRE CHANGES
FLUID DELIVERY
LOCKOUT
SERVICE

WINCH-OUT
MOBILE MECHANIC
TECHNICAL
SUPPORT
DEALER LOCATOR
SERVICES



*VALID FOR 1 YEAR FROM DATE OF PURCHASE

SPECIFICATION DEFINITIONS GVWR (Gross Vehicle Weight Rating) - is the maximum permissible weight of the unit when fully loaded. It includes all weights, inclusive of all fluids, cargo, optional equipment and accessories. For safety and product performance do NOT exceed the GVWR. // **GAWR (Gross Axle Weight Rating)** - is the maximum permissible weight, including cargo, fluids, optional equipment and accessories that can be safely supported by a combination of all axles. // **UVW (Unloaded Vehicle Weight)** - is the typical weight of the unit as manufactured at the factory. It includes all weight at the unit's axle(s) and tongue or pin and LP Gas. The UVW does not include cargo, fresh potable water, additional optional equipment or dealer installed accessories. *Estimated average based on standard build optional equipment. // **CCC (Cargo Carrying Capacity)**** - is the amount of weight available for fresh potable water, cargo, additional optional equipment and accessories. CCC is equal to GVWR minus UVW. Available CCC should accommodate fresh potable water (8.3 lbs per gallon). Before filling the fresh water tank, empty the black and gray tanks to provide for more cargo capacity. ** Estimated average based on standard build optional equipment. Each Forest River RV is weighed at the manufacturing facility prior to shipping. A label identifying the unloaded vehicle weight of the actual unit and the cargo carrying capacity is applied to every Forest River RV prior to leaving our facilities. The load capacity of your unit is designated by weight, not by volume, so you cannot necessarily use all available space when loading your unit.