

NORTHERN SPIRIT

CAMPING SIMPLIFIED.



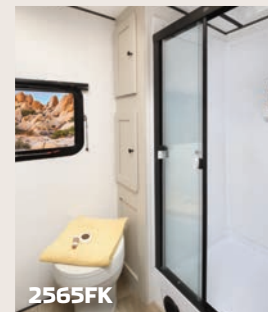
A FOREST RIVER® BRAND

**NORTHERN
SPIRIT**

NORTHERN SPIRIT HAS THE RIGHT FEATURES IN THE RIGHT PLACES TO MAKE YOUR CAMPING EXPERIENCE MORE ENJOYABLE. WELL DESIGNED STORAGE SPACES PROVIDE EASY ACCESS TO EVERYTHING.



2565FK



ULTRA LITE FLOORPLANS

FLOORPLANS



1943RB



2353RB



2455BH



2557RB



2565FK



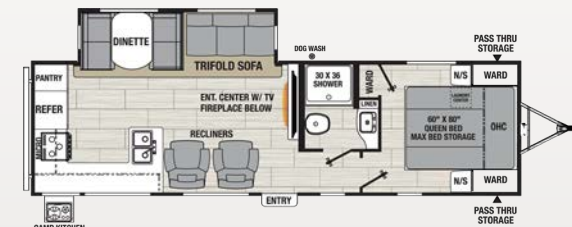
2764RE



2963BH

SPECIFICATIONS

| ULTRA LIGHT | 1943RB | 2353RB | 2455BH | 2557RB | 2565FK | 2764RE | 2963BH | 2965RK |
|-----------------------------|--------|---------|---------|--------|--------|---------|--------|--------|
| Hitch Weight | 520 | 640 | 790 | 648 | 868 | 840 | 982 | 770 |
| Carrying Capacity | 1,574 | 1,508 | 1,872 | 1,758 | 1,430 | 1,956 | 2,144 | 1,022 |
| UVW | 4,926 | 5,492 | 5,728 | 5,842 | 6,400 | 7,044 | 6,856 | 6,578 |
| GVWR | 6,500 | 7,000 | 7,600 | 7,600 | 7,868 | 9,000 | 9,000 | 7,600 |
| Ext. Length | 24' 0" | 25' 11" | 28' 11" | 29' 3" | 29' 8" | 32' 10" | 34' 0" | 33' 5" |
| Ext. Height | 11' 1" | 11' 3" | 11' 1" | 11' 1" | 11' 1" | 11' 4" | 11' 2" | 11' 3" |
| Ext. Width | 96" | 96" | 96" | 96" | 96" | 96" | 96" | 96" |
| Awning Length | 15' | TBD | 20' | 18' | 18' | 12' | 18' | 20' |
| Fresh Water Capacity (gal.) | 50 | 50 | 50 | 50 | 50 | 50 | 50 | 50 |
| Gray Water Capacity (gal.) | 35 | 35 | 70 | 70 | 70 | 35 | 35 | 70 |
| Waste Water Capacity (gal.) | 35 | 35 | 35 | 35 | 35 | 35 | 35 | 35 |

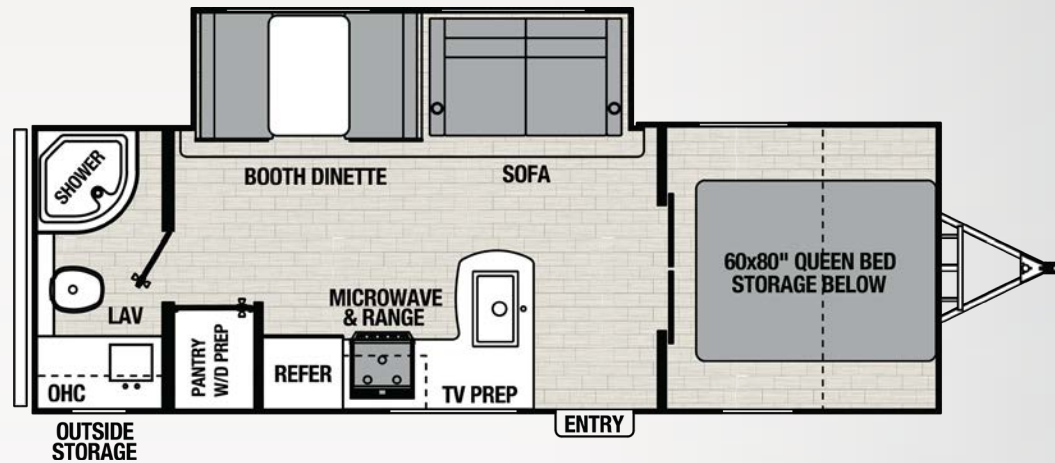


2965RK

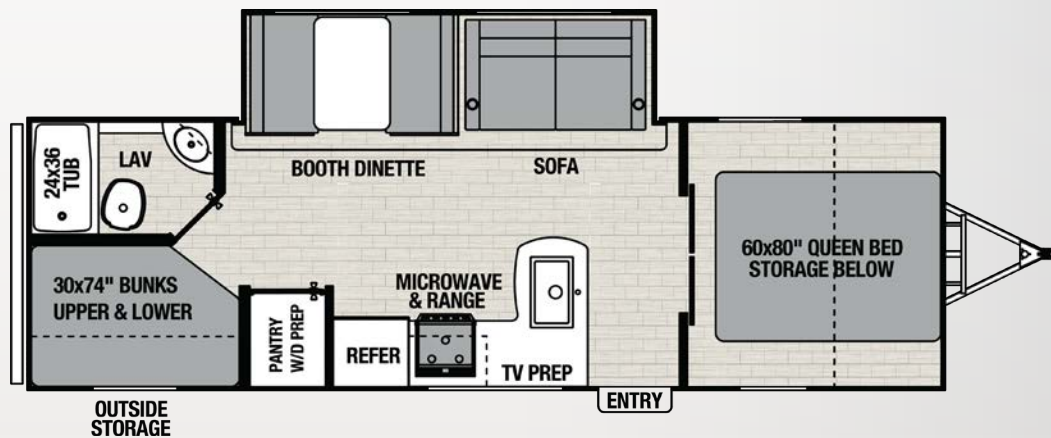
NORTHERN SPIRIT'S NEWEST SEGMENT DELIVERS ALL OF THE ESSENTIAL FEATURES, FLOORPLANS, AND CONTRUCTION WITHOUT BREAKING THE BANK.

SE FLOORPLANS

FLOORPLANS



24RB



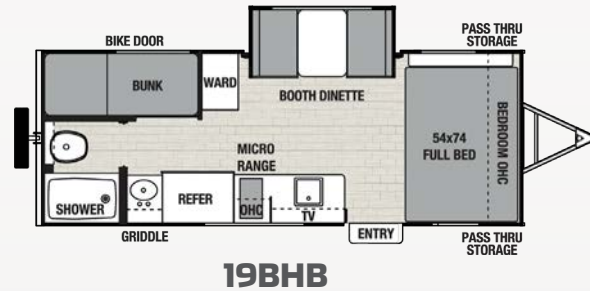
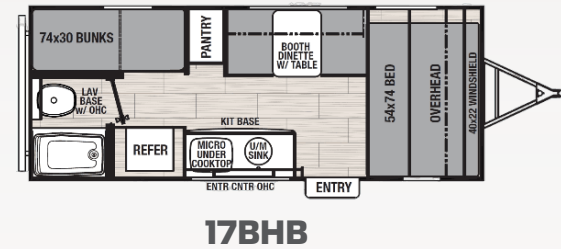
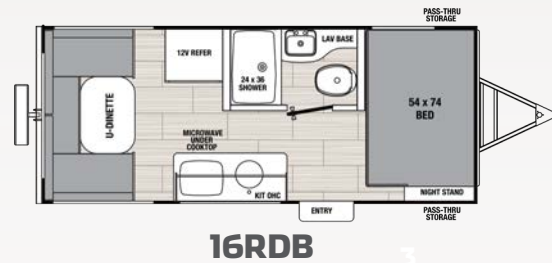
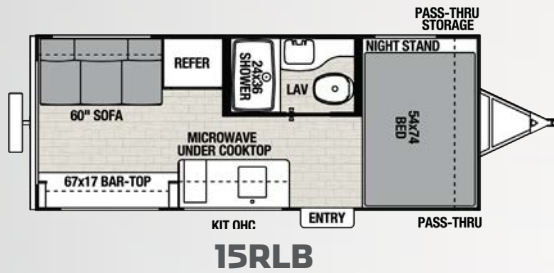
26BH

SPECIFICATIONS

| ULTRA LIGHT | 24RB | 26BH |
|-----------------------------|---------|---------|
| Hitch Weight | 584 | 694 |
| Carrying Capacity | 2,279 | 2,053 |
| UVW | 5,286 | 5,622 |
| GVWR | 7,584 | 7,694 |
| Ext. Length | 29' 1" | 30' 11" |
| Ext. Height | 10' 10" | 10' 11" |
| Ext. Width | 96" | 96" |
| Awning Length | 15' | 20' |
| Fresh Water Capacity (gal.) | 50 | 50 |
| Gray Water Capacity (gal.) | 35 | 35 |
| Waste Water Capacity (gal.) | 35 | 35 |

BIJOU FLOORPLANS

FLOORPLANS



SPECIFICATIONS

| ULTRA LIGHT | 15RLB | 16RDB | 17BHB | 18RBB | 19BHB |
|-----------------------------|-------|---------|--------|---------|---------|
| Hitch Weight | TBD | 396 | 332 | 308 | 3930 |
| Carrying Capacity | TBD | 1,392 | 1,134 | 1,397 | 1176 |
| UVW | TBD | 3,008 | 3,266 | 3,003 | 3598 |
| GVWR | TBD | 4,400 | 4,400 | 4,400 | 4793 |
| Ext. Length | TBD | 20' 11" | 21'9" | 20' 10" | 22' 11" |
| Ext. Height | TBD | 9' 10" | 9' 10" | 9' 10" | 9' 11" |
| Ext. Width | TBD | 84" | 84" | 84" | 84" |
| Awning Length | TBD | 14' | 14' | 12' | 18' |
| Fresh Water Capacity (gal.) | TBD | 50 | 50 | 50 | 50 |
| Gray Water Capacity (gal.) | TBD | 35 | 35 | 35 | 35 |
| Waste Water Capacity (gal.) | TBD | 35 | 35 | 35 | 35 |



18RBB



CAMPING SIMPLIFIED PACKAGE (ULTRA LITE FLOORPLANS ONLY) VAULTED CEILINGS, "TWICE COOL" DUAL DUCTED AIR CONDITIONING SYSTEM, MOTION ACTIVATED FLOOR LIGHTS, EXTERIOR DOG LEASH CLIP, BOTTLE OPENER, EXTERIOR FISHING POLE STORAGE, MAX BED STORAGE, KIDS CONVENIENCE CENTER (BUNK MODELS), MOTION ACTIVATED EXTERIOR STORAGE LIGHT, 3/4" QUICK CONNECT STABILIZER JACK BIT, DINETTE STORAGE BIN

CUSTOMER CONVENIENCE PACKAGE (ULTRA LITE FLOORPLANS ONLY) FIBERGLASS FRONT CAP W/ LED STRIP LIGHTS, ALUMINUM WHEELS, SPARE TIRE KIT, POWER AWNING W/ LED STRIP LIGHT, FRONT ROCK GUARD, TV & RADIO ANTENNA W/ BOOSTER, SOLID STEPS, 200W SOLAR PANEL W/ 30A CONTROL CHARGER, BLUETOOTH SPEAKER, LED TV, SATELLITE PREP, NIGHT SHADES, MICROWAVE, 3 BURNER COOKTOP W/ OVEN, 12V DOUBLE DOOR REFRIGERATOR, EXTERIOR GRIDDLE, TANKLESS WATER HEATER, SKYLIGHT IN BATH, RVIA

BIJOU CAMPING SIMPLIFIED PACKAGE FISHING POLE STORAGE, 3/4" QUICK CONNECT STABILIZER JACK BIT, EXTERIOR GRIDDLE, EXTERIOR DOG LEASH CLIP, BOTTLE OPENER, MOTION ACTIVATED EXTERIOR STORAGE LIGHT, TV PREP

BIJOU CUSTOMER CONVENIENCE PACKAGE FRONT CAP WINDOW, ALUMINUM WHEELS, SOLID STEPS, BACKUP CAMERA PREP, SPARE TIRE KIT, POWER AWNING W/ LED STRIP LIGHTS, FRONT ROCK GUARD, SOLAR PREP, AIR CONDITIONER, BLUETOOTH SPEAKER, NIGHT SHADES, TANKLESS WATER HEATER, TAINLESS STEEL SINK, MICROWAVE, 2 BURNER COOKTOP, DOUBLE DOOR REFRIGERATOR

NORTHERN SPIRIT ESSENTIALS PACKAGE (SE FLOORPLANS ONLY) DOUBLE AZDEL SIDEWALLS, PVC ROOF, SOLAR PREP, BACKUP CAMERA PREP, FRONT ROCK GUARD, SPARE TIRE KIT, POWER AWNING W/ LED STRIP LIGHTS, SLIDE TOPPER PREP, AIR CONDITIONER, NIGHT SHADES, STAINLESS STEEL SINK, TANKLESS WATER HEATER, DOUBLE DOOR REFRIGERATOR, 2 BURNER COOKTOP, MICROWAVE



**24/7 EMERGENCY
ROADSIDE ASSISTANCE
WITH VEHICLE PURCHASE***

| | |
|----------------|-----------------|
| TOWING | WINCH-OUT |
| JUMP-STARTS | MOBILE MECHANIC |
| TIRE CHANGES | TECHNICAL |
| FLUID DELIVERY | SUPPORT |
| LOCKOUT | DEALER LOCATOR |
| SERVICE | SERVICES |



*VALID FOR 1 YEAR FROM DATE OF PURCHASE



PRE-DELIVERY INSPECTION FACILITY
20,000 square feet of quality assurance. The bare essentials for a premium product. This state-of-the-art facility gives immediate daily feedback to production for quality assurance in every unit built.



To learn more about Coachmen RV and our products and see how Coachmen is making the easy life easier, visit www.coachmenrv.com.




FREE MEMBERSHIP
to Forest River Owners' Group



www.forestriverfrog.com

your northernspirit dealer



Check out the Northern Spirit website



Learn More
Scan this barcode using a QR Reader on your smart phone to learn more about Forest River.



All information contained in this brochure is believed to be accurate at the time of publication. However, during the model year, it may be necessary to make revisions and Forest River, Inc., reserves the right to make all such changes without notice, including prices, colors, materials, equipment and specifications as well as the addition of new models and the discontinuance of models shown on this poster. Therefore, please consult with your Coachmen Inc., dealer and confirm the existence of any materials, design or specifications that are material to your purchase decision. © 2024 Northern Spirit by Coachmen RV, a division of Forest River Inc., a Berkshire Hathaway company, All right reserved 02/24

www.coachmenrv.com/northernspirit