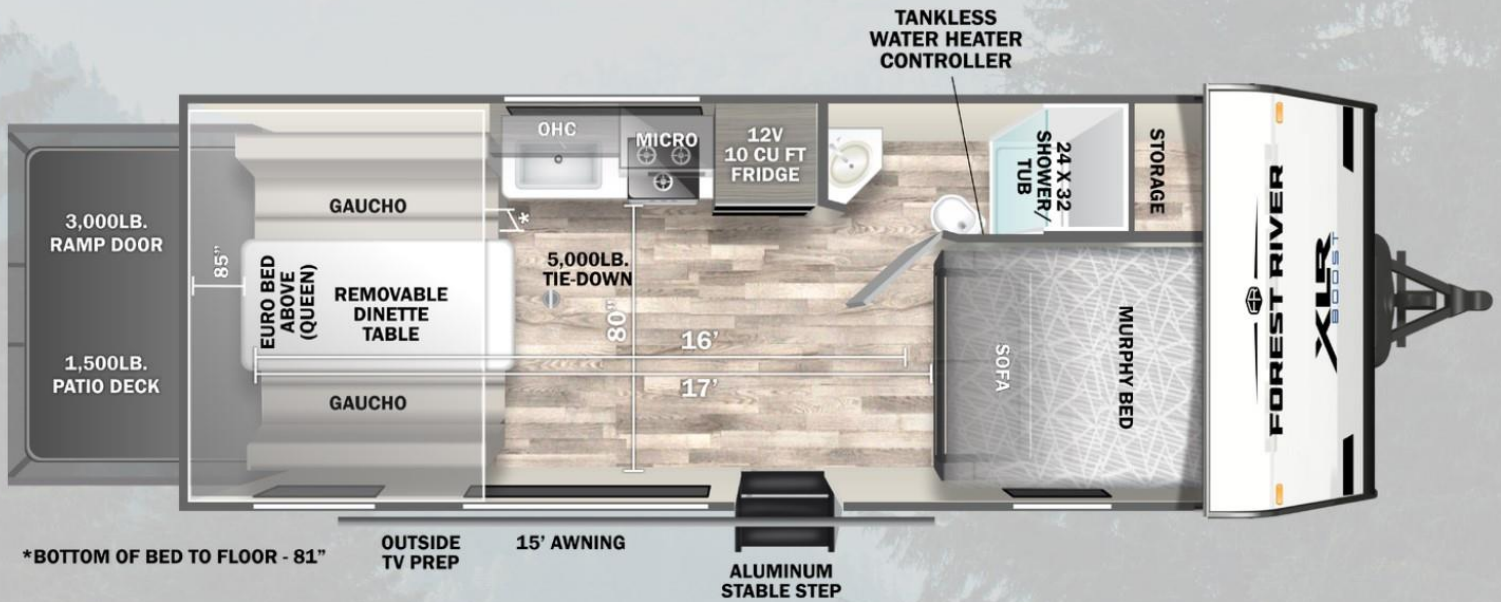


XLR

TOY HAULERS

2017B



*BOTTOM OF BED TO FLOOR - 81"

OUTSIDE
TV PREP

15' AWNING

ALUMINUM
STABLE STEP

Hitch: TBD	UVW: TBD	CCC: TBD.
Length: TBD	Height: 12'	Width: 102"
Fresh TBD	Grey: TBD	Black TBD

Top Features

- Vacuum Bonded Aluminum Framed Side Wall
- JBL Aura Sound System
- 1.5 Convection Microwave
- 10cuft French Door Fridge
- 15K Ducted Main A/C
- MORryde Folding Entry Steps
- 5,000 lb. Tiedowns
- Tankless On Demand Hot Water
- 200W Solar Panel w/ 30Amp Controller
- Porcelain toilet
- Euro Manual Garage Beds system
- Glass Friction Hinge entry Door

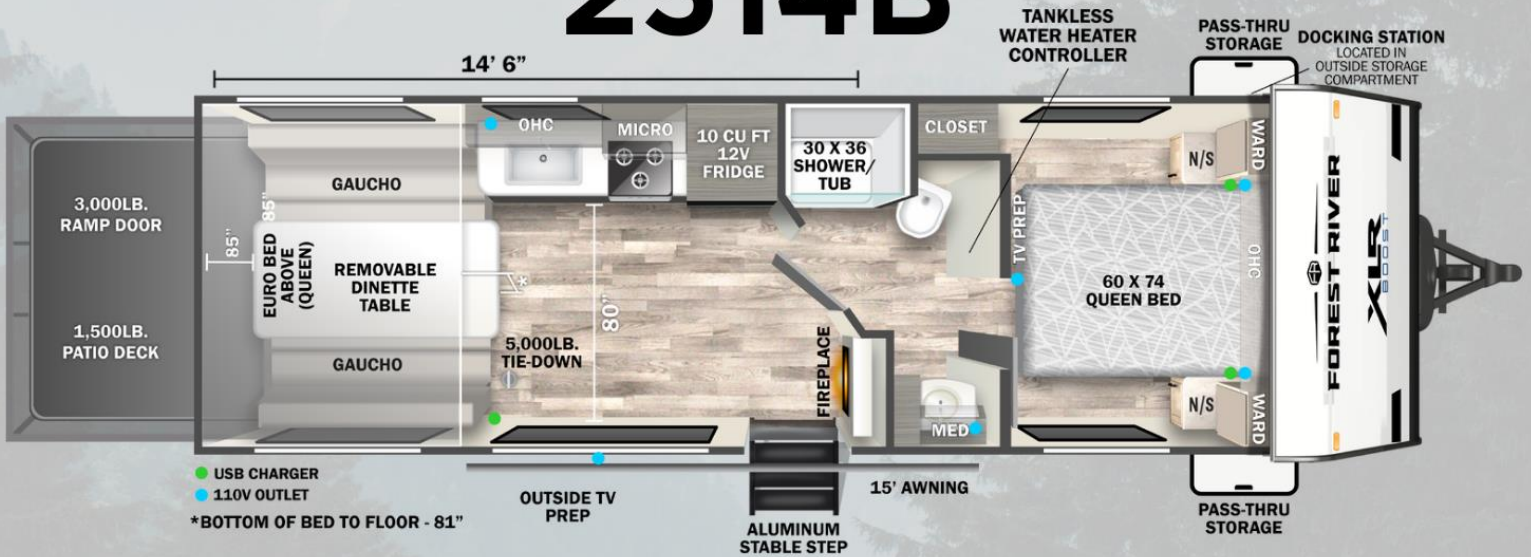


FOREST RIVER

FORESTRIVERINC.COM



2514B



Hitch: 1,190 lbs. UVW: 6,813 lbs. CCC: 4,577 lbs.
 Length: 29' Height: 12' Width: 102"
 Fresh 102 Gal Grey: 80 Gal Black 32 Gal

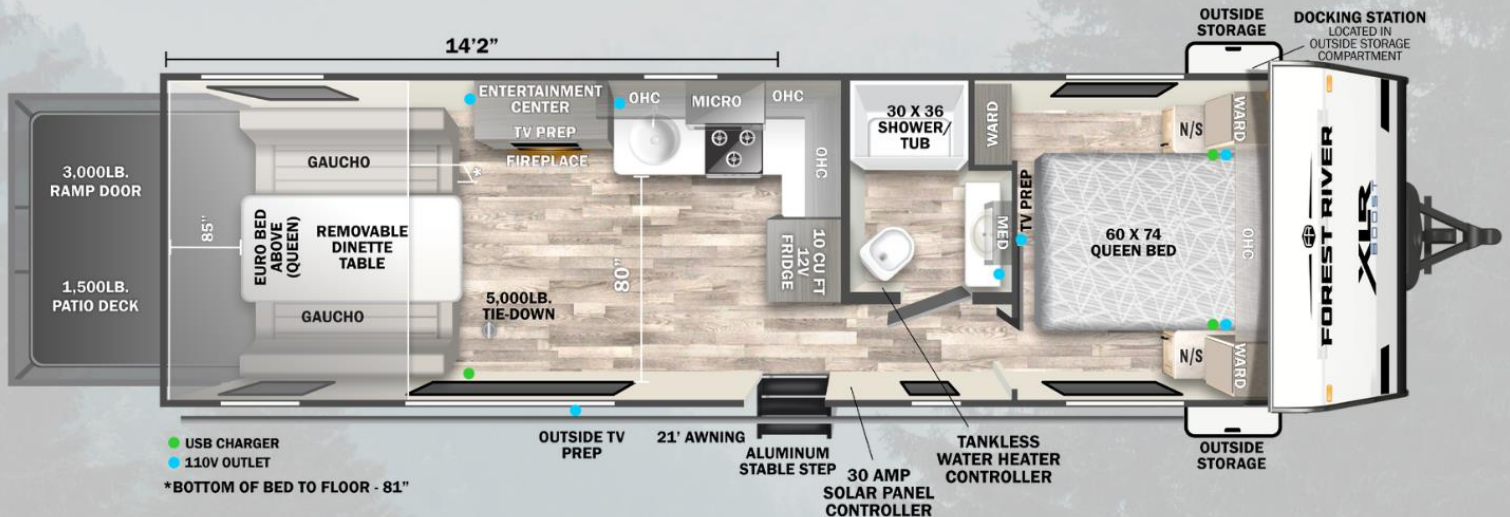
Top Features

- Vacuum Bonded Aluminum Framed Side Wall
- JBL Aura Sound System
- 1.5 Convection Microwave
- 10cuft French Door Fridge
- 15K Ducted Main A/C
- MORryde Folding Entry Steps
- 5,000 lb. Tiedowns
- Tankless On Demand Hot Water
- 200W Solar Panel w/ 30Amp Controller
- Porcelain toilet
- Euro Manual Garage Beds system
- Glass Friction Hinge entry Door
- 30" 5K BTU Fireplace





2714B



Hitch: 1,090 lbs. UVW: 6,948 lbs. CCC: 4,342 lbs.
 Length: 32'8" Height: 12' Width: 102"
 Fresh 102 Gal Grey: 64 Gal Black 32 Gal

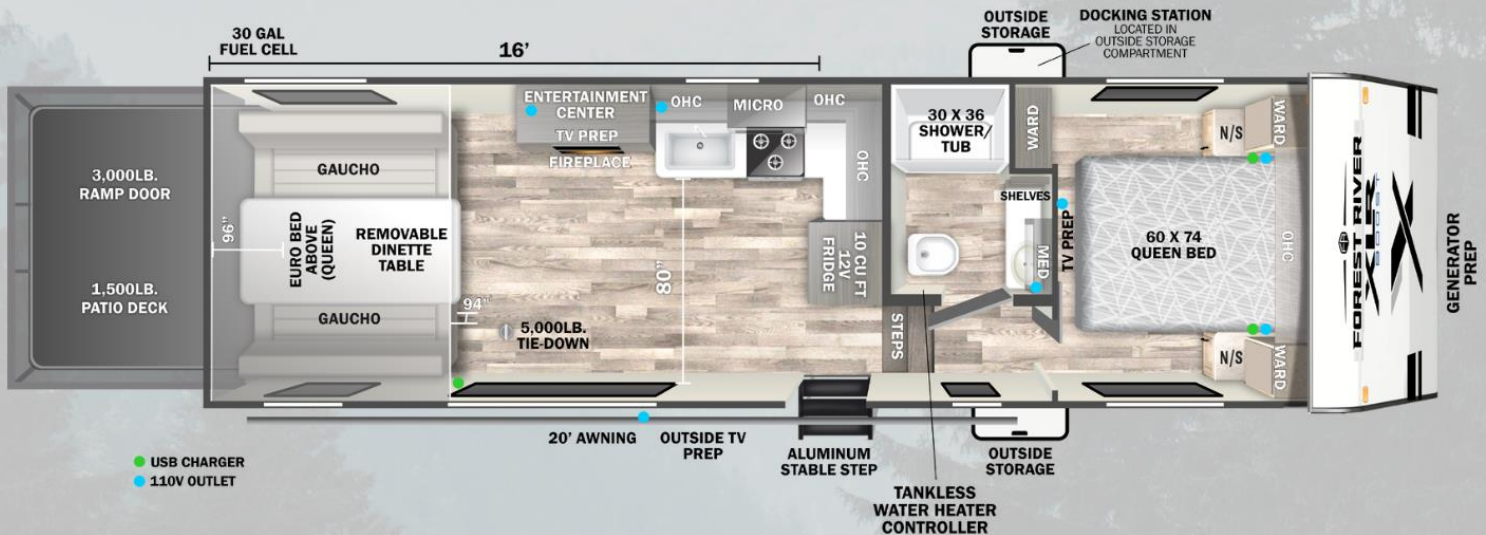
Top Features

- Vacuum Bonded Aluminum Framed Side Wall
- JBL Aura Sound System
- 1.5 Convection Microwave
- 10cuft French Door Fridge
- 15K Ducted Main A/C
- MORryde Folding Entry Steps
- 5,000 lb. Tiedowns
- Tankless On Demand Hot Water
- 200W Solar Panel w/ 30Amp Controller
- Porcelain toilet
- Euro Manual Garage Beds system
- Glass Friction Hinge entry Door
- 30" 5K BTU Fireplace





286B



Hitch: 2,230 lbs. UVW: 9,864 lbs. CCC: 6,366 lbs.
 Length: 31'4" Height: 13'4" Width: 102"
 Fresh 140 Gal Grey: 108 Gal Black 32 Gal

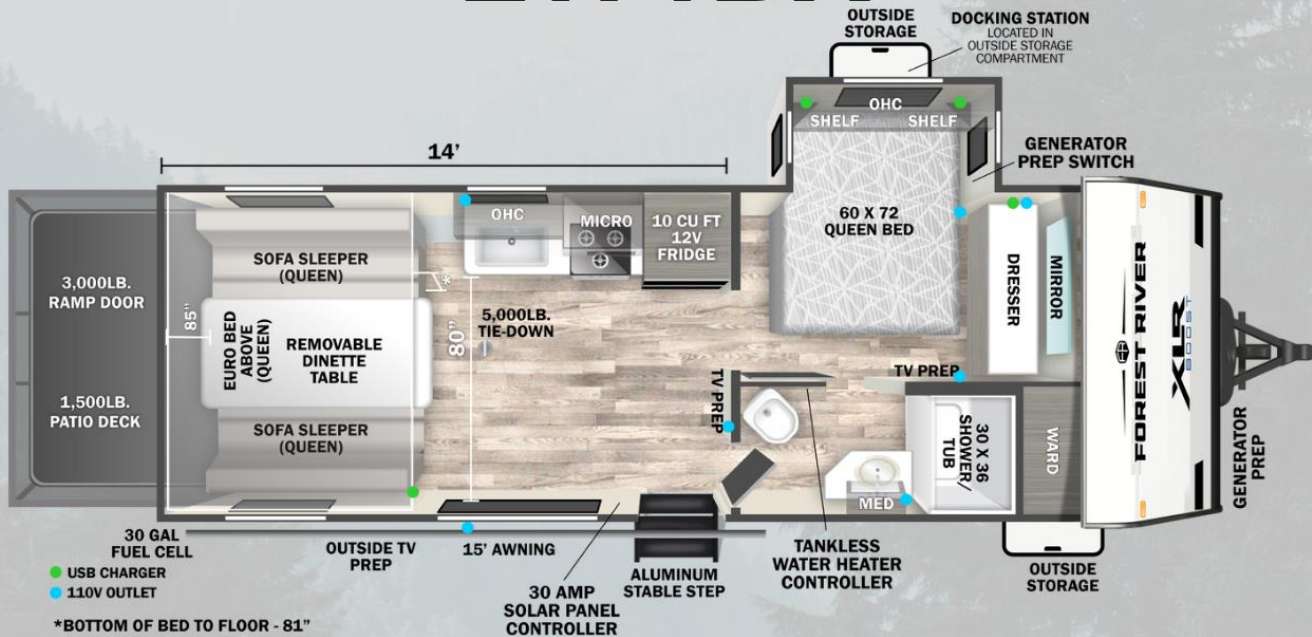
Top Features

- Vacuum Bonded Aluminum Framed Side Wall
- JBL Aura Sound System
- 1.5 Convection Microwave
- 10cuft French Door Fridge
- 15K Ducted Main A/C
- MORryde Folding Entry Steps
- 5,000 lb. Tiedowns
- Tankless On Demand Hot Water
- 200W Solar Panel w/ 30Amp Controller
- Porcelain toilet
- Euro Manual Garage Beds system
- Glass Friction Hinge entry Door
- 30" 5K BTU Fireplace
- 30-Gallon Fuel Cell w/ Pumping Station
- Generator Prep





2114BX



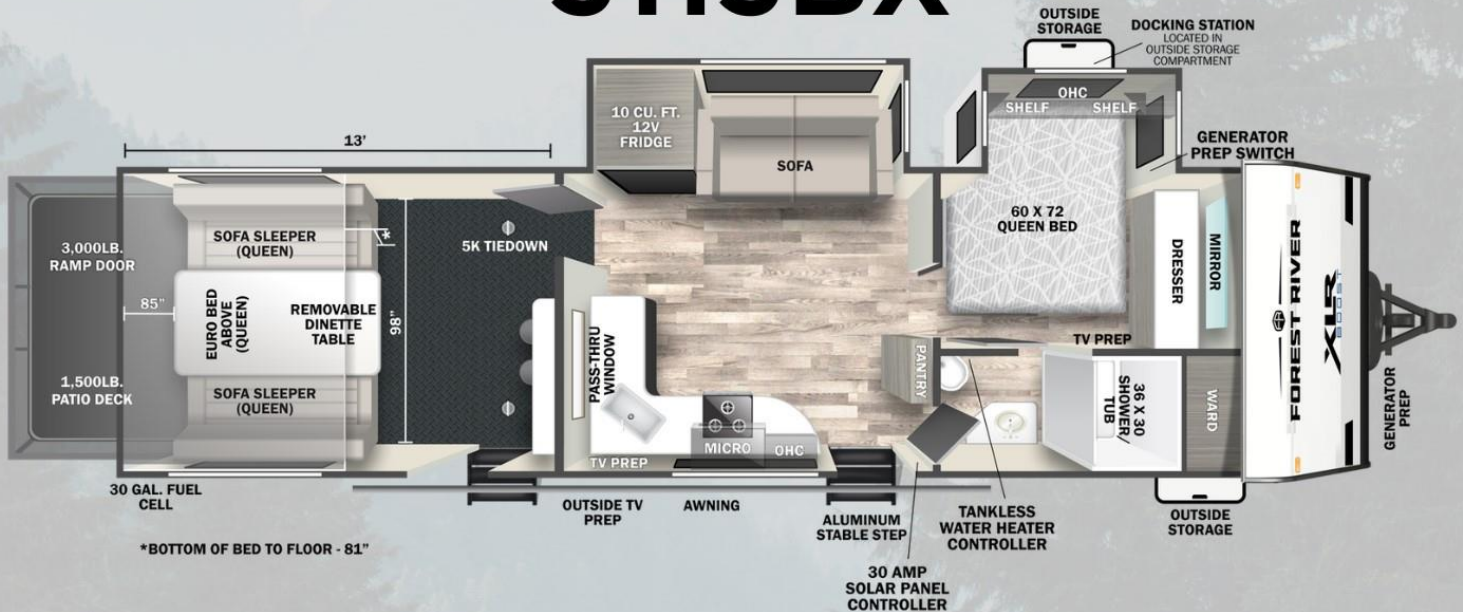
Hitch: 1,090 lbs. UVW: 7,428 lbs. CCC: 3,962 lbs.
 Length: 27'6" Height: 12' Width: 102"
 Fresh: 102 Gal Grey: 64 Gal Black: 32 Gal

Top Features

- Vacuum Bonded Aluminum Framed Side Wall
- JBL Aura Sound System
- 1.5 Convection Microwave
- 10cuft French Door Fridge
- 15K Ducted Main A/C
- MORryde Folding Entry Steps
- 5,000 lb. Tiedowns
- Tankless On Demand Hot Water
- 200W Solar Panel w/ 30Amp Controller
- Porcelain toilet
- Euro Manual Garage Beds system
- Glass Friction Hinge entry Door
- 30" 5K BTU Fireplace
- 30-Gallon Fuel Cell w/ Pumping Station
- Generator Prep



3113BX



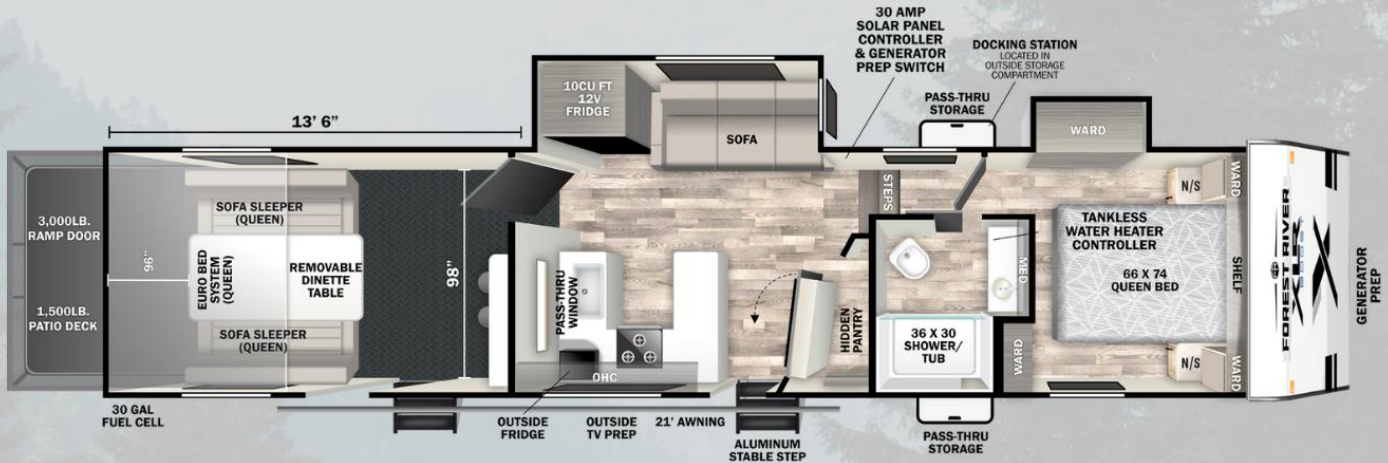
Hitch: TBD	UVW: TBD	CCC: TBD
Length: TBD	Height: 12'	Width: 102"
Fresh: TBD	Grey: TBD	Black: TBD

Top Features

- Vacuum Bonded Aluminum Framed Side Wall
- JBL Aura Sound System
- 1.5 Convection Microwave
- 10cuft French Door Fridge
- 15K Ducted Main A/C
- MORryde Folding Entry Steps
- 5,000 lb. Tiedowns
- Tankless On Demand Hot Water
- 200W Solar Panel w/ 30Amp Controller
- Porcelain toilet
- Euro Manual Garage Beds system
- Glass Friction Hinge entry Door
- 30-Gallon Fuel Cell w/ Pumping Station
- Generator Prep



363BX



Hitch: 2,830 lbs. UVW: 12,009 lbs. CCC: 4,821 lbs.
 Length: 39'9" Height: 13'4" Width: 102"
 Fresh: 150 Gal Grey: 108 Gal Black: 32 Gal

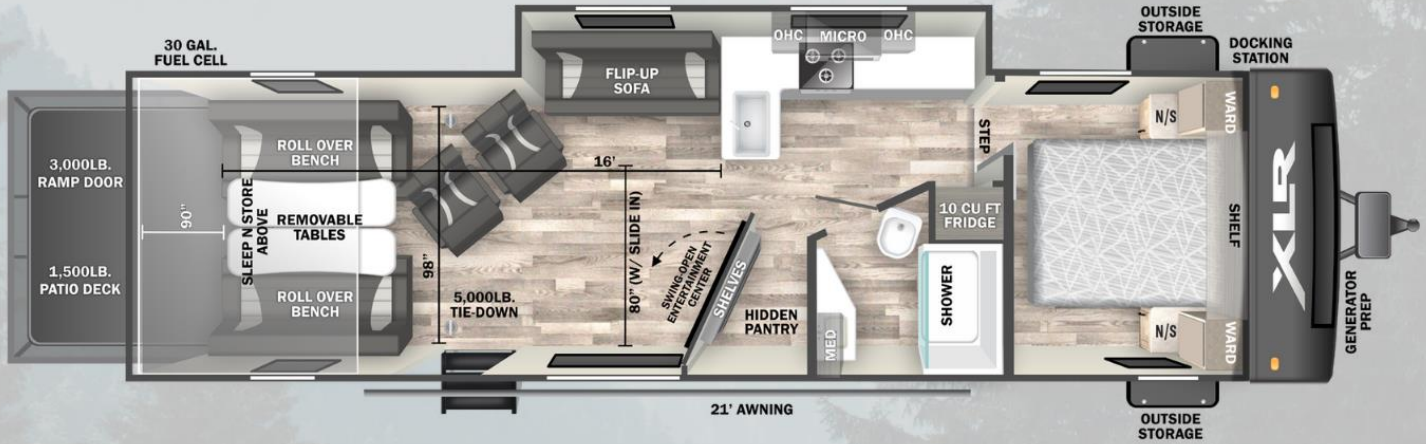
Top Features

- Vacuum Bonded Aluminum Framed Side Wall
- JBL Aura Sound System
- 1.5 Convection Microwave
- 10cuft French Door Fridge
- 15K Ducted Main A/C
- MORryde Folding Entry Steps
- 5,000 lb. Tiedowns
- Tankless On Demand Hot Water
- 200W Solar Panel w/ 30Amp Controller
- Porcelain toilet
- Euro Manual Garage Beds system
- Glass Friction Hinge entry Door
- 30" 5K BTU Fireplace
- 30-Gallon Fuel Cell w/ Pumping Station
- Generator Prep
- Hidden Pantry





3016H



Hitch: 1,665 lbs. UVW: 9,274 lbs. CCC: 4,391 lbs.
 Length: 35'9" Height: 12'6" Width: 102"
 Fresh: 100 Gal Grey: 72 Gal Black: 30 Gal

Top Features

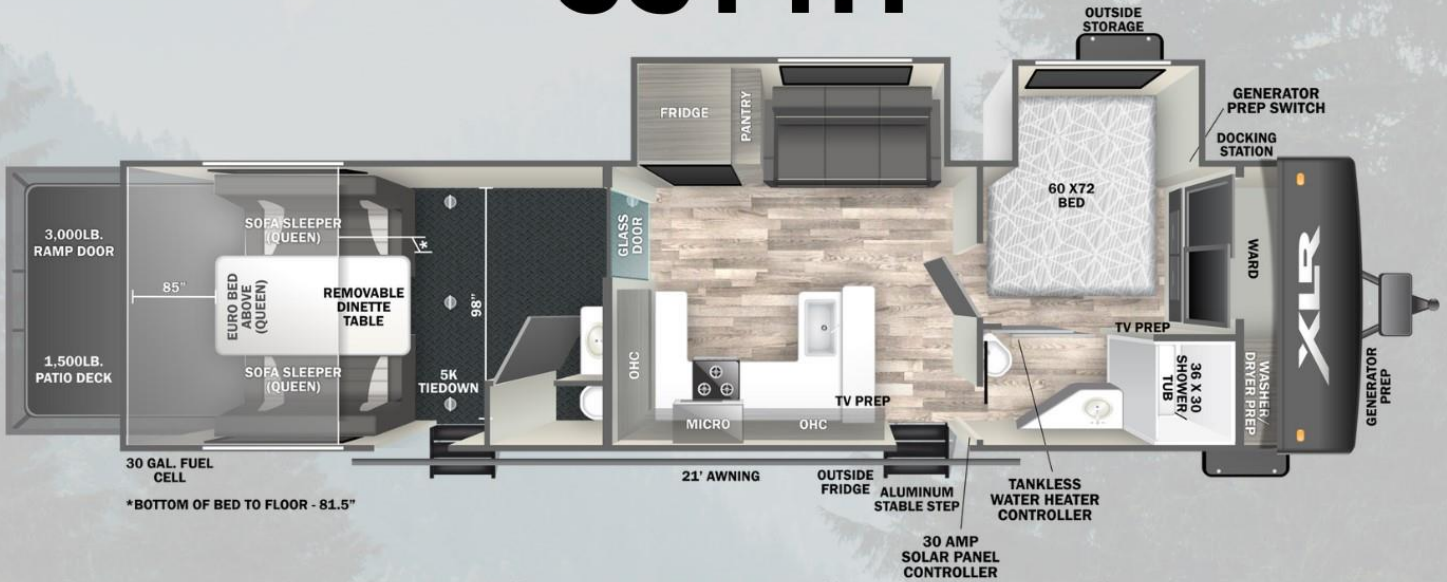
- Vacuum Bonded Aluminum Framed Side Wall
- Klipsch Sound Bar & Speaker
- 1.5 Convection Microwave
- 10cuft French Door Fridge
- 15K Ducted Main A/C
- MORryde Folding Entry Steps
- 5,000 lb. Tiedowns
- Tankless On Demand Hot Water
- 200W Solar Panel w/ 30Amp Controller
- Happi Jack Bed System
- Glass Friction Hinge entry Door
- 30" 5K BTU Fireplace
- 30-Gallon Fuel Cell w/ Pumping Station
- Generator Prep
- Hidden Pantry



XLR

TOY HAULERS

3314H



Hitch: 2,135 lbs. UVW: 10,669 lbs. CCC: 3,466 lbs.
 Length: 38'4" Height: 12'6" Width: 102"
 Fresh: 100 Gal Grey: 60 Gal Black: 60 Gal

Top Features

- Vacuum Bonded Aluminum Framed Side Wall
- Klipsch Sound Bar & Speaker
- 1.5 Convection Microwave
- 10cuft French Door Fridge
- 15K Ducted Main A/C
- MORryde Folding Entry Steps
- 5,000 lb. Tiedowns
- Tankless On Demand Hot Water
- 200W Solar Panel w/ 30Amp Controller
- Happi Jack Bed System
- Glass Friction Hinge entry Door
- 30" 5K BTU Fireplace
- 30-Gallon Fuel Cell w/ Pumping Station
- Generator Prep
- Hidden Pantry



FOREST RIVER

FORESTRIVERINC.COM



31W16



Hitch: 2,900 lbs. UVW: 12,454 lbs. CCC: 4,446 lbs.
 Length: 38'4" Height: 13'4" Width: 102"
 Fresh: 102 Gal Grey: 102 Gal Black: 32 Gal

Top Features

- Vacuum Bonded Aluminum Framed Side Wall
- Klipsch Sound Bar, Subwoofer & Speaker
- 1.5 Convection Microwave
- 16 cuft French Door Fridge
- (2) 18K Chill Cube A/C
- MORryde Folding Entry Steps
- 5,000 lb. Tiedowns
- Tankless On Demand Hot Water
- 200W Solar Panel w/ 30Amp Controller
- Happi Jack Bed System
- Glass Friction Hinge entry Door
- 30" 5K BTU Fireplace
- 40-Gallon Fuel Cell w/ Pumping Station
- Generator Prep
- 6.0 Auto Electric Leveling
- Gear Guardian Camera In Garage





36G15



Hitch: 3,180 lbs. UVW: 14,094 lbs. CCC: 3,086 lbs.
 Length: 42'6" Height: 13'4" Width: 102"
 Fresh: 150 Gal Grey: 110 Gal Black: 98 Gal

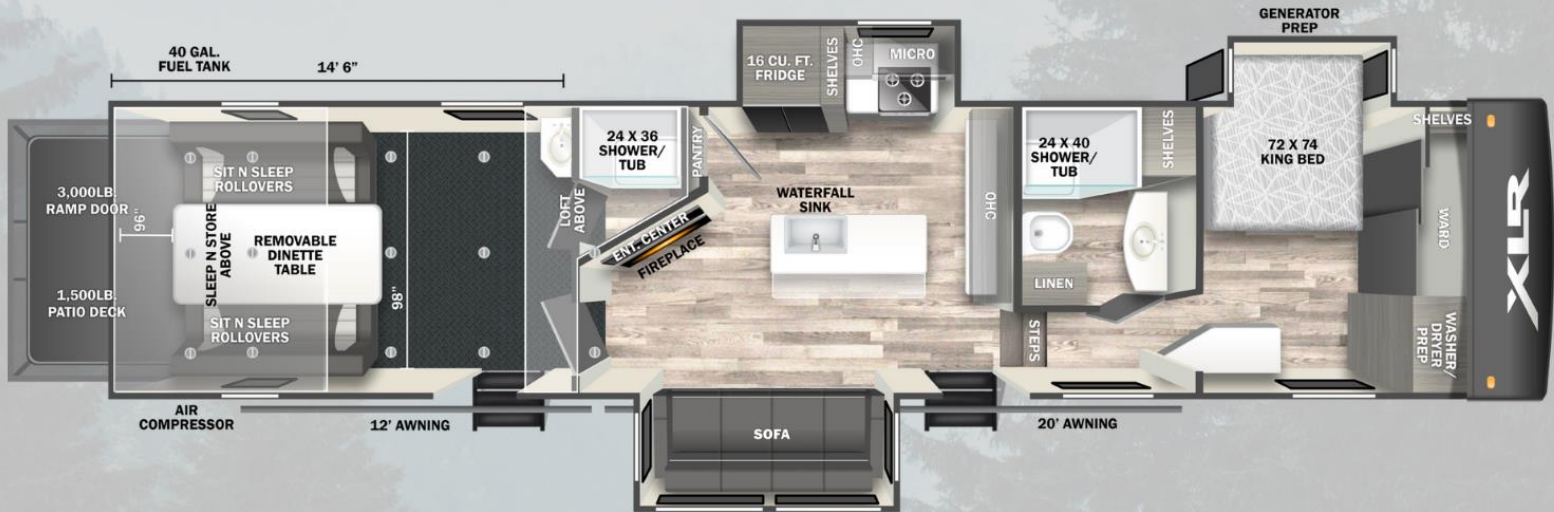
Top Features

- Vacuum Bonded Aluminum Framed Side Wall
- Klipsch Sound Bar, Subwoofer & Speaker
- 1.5 Convection Microwave
- 16 cuft French Door Fridge
- (3) 18K Chill Cube A/C
- MORryde Folding Entry Steps
- 5,000 lb. Tiedowns
- Tankless On Demand Hot Water
- 200W Solar Panel w/ 30Amp Controller
- Happi Jack Bed System
- Glass Friction Hinge entry Door
- 30" 5K BTU Fireplace
- 40-Gallon Fuel Cell w/ Pumping Station
- Generator Prep
- 6.0 Auto Electric Leveling
- Gear Guardian Camera In Garage





39G15



Hitch: 3,335 lbs. UVW: 16,354 lbs. CCC: 4,646 lbs.
 Length: 44'6" Height: 13'4" Width: 102"
 Fresh: 150 Gal Grey: 100 Gal Black: 86 Gal

Top Features

- Vacuum Bonded Aluminum Framed Side Wall
- Klipsch Sound Bar, Subwoofer & Speaker
- 1.5 Convection Microwave
- 16 cuft French Door Fridge
- (3) 18K Chill Cube A/C
- MORryde Folding Entry Steps
- 5,000 lb. Tiedowns
- Tankless On Demand Hot Water
- 200W Solar Panel w/ 30Amp Controller
- Happi Jack Bed System
- Glass Friction Hinge entry Door
- 30" 5K BTU Fireplace
- 40-Gallon Fuel Cell w/ Pumping Station
- Generator Prep
- 6.0 Auto Electric Leveling
- Gear Guardian Camera In Garage





41G14



Hitch: 3,150 lbs. UVW: 15,624 lbs. CCC: 5,376 lbs.
 Length: 45'6" Height: 13'4" Width: 102"
 Fresh: 150 Gal Grey: 120 Gal Black: 80 Gal

Top Features

- Vacuum Bonded Aluminum Framed Side Wall
- Klipsch Sound Bar, Subwoofer & Speaker
- 1.5 Convection Microwave
- 16 cuft French Door Fridge
- (3) 18K Chill Cube A/C
- MORryde Folding Entry Steps
- 5,000 lb. Tiedowns
- Tankless On Demand Hot Water
- 200W Solar Panel w/ 30Amp Controller
- Happi Jack Bed System
- Glass Friction Hinge entry Door
- 30" 5K BTU Fireplace
- 40-Gallon Fuel Cell w/ Pumping Station
- Generator Prep
- 6.0 Auto Electric Leveling
- Gear Guardian Camera In Garage





40BAR13

“The Newest Innovation in Side Patios”



Hitch: 3,105 lbs.
Length: 45'7"
Fresh: 150 Gal

UVW: 15,674 lbs.
Height: 13'4"
Grey: 132 Gal

CCC: 5,326 lbs.
Width: 102"
Black: 32 Gal

Top Features

- Largest Side Patio in the Industry
- Bar seating for 8
- (3) 50" TV's
- (3) Klipsch Sound bars
- Massive Hidden Pantry
- 13' Garage
- King Bed Slide
- 40 Gallon Fuel Cell
- Large L Shaped Couch
- 125 PSI Air Compressor
- 5,000lb Tiedowns
- TST Tire Pressure Monitoring
- Good Year 16" Tires
- Interior Architectural Metal Structure