

# Autumn Ridge

2025 TRAVEL TRAILERS



**Nestle**  
into Nature



  
**STARCRAFT**



2025 Autumn Ridge 22MLS

# Autumn Ridge

## 2025 Travel Trailers

### Single Axle

180BHS



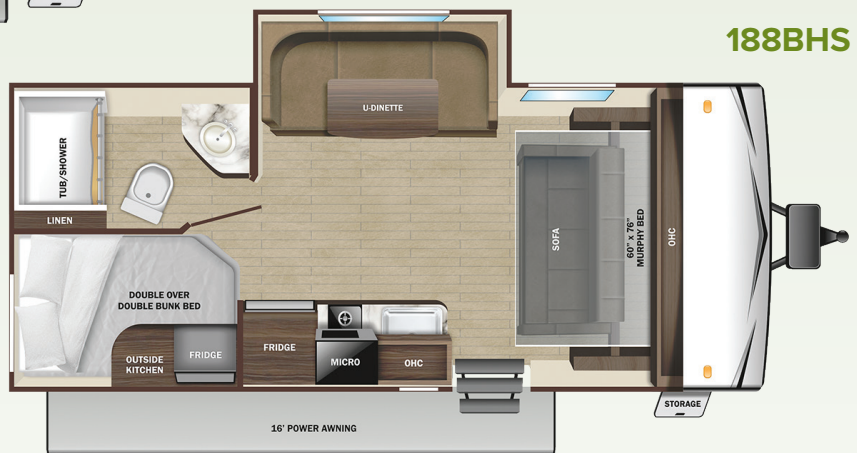
19BH



182RB



188BHS



# Autumn Ridge

## 2025 Travel Trailers

### Dual Axle

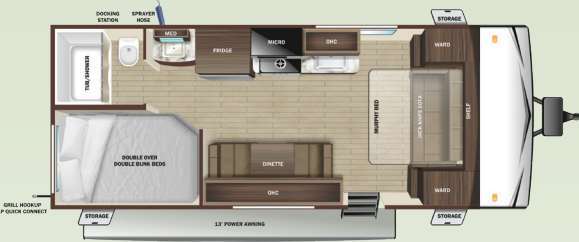
20FBS



27BH



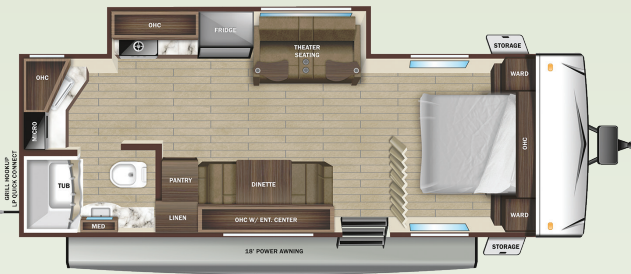
20MB



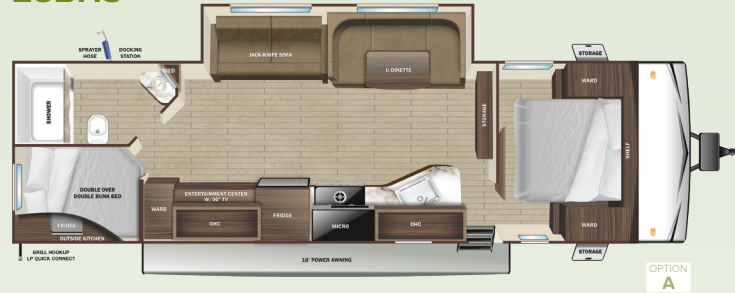
26BHS



22MLS



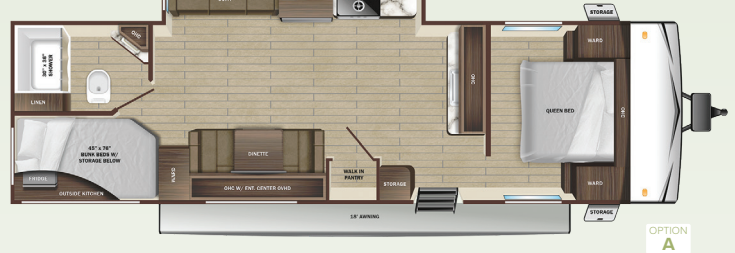
28BHS



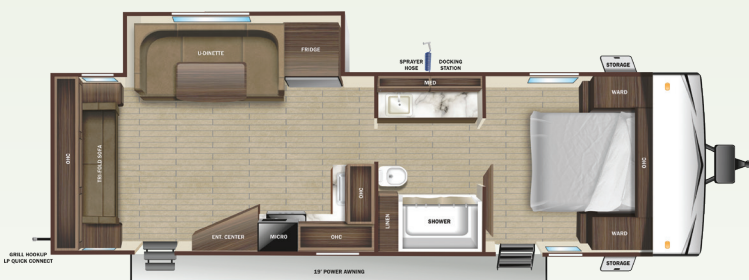
26BH



27BHP



26RLS



### Autumn Ridge Options

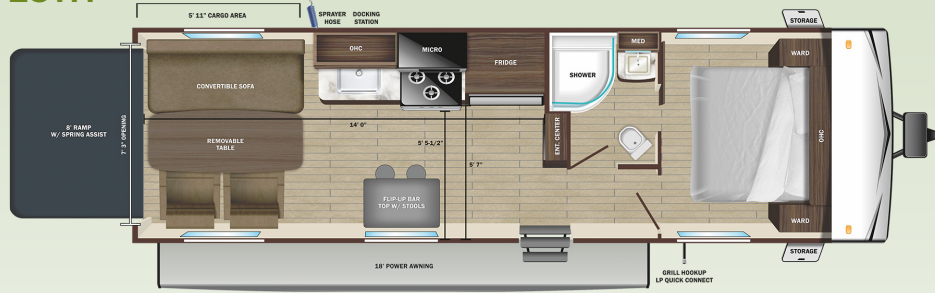
A



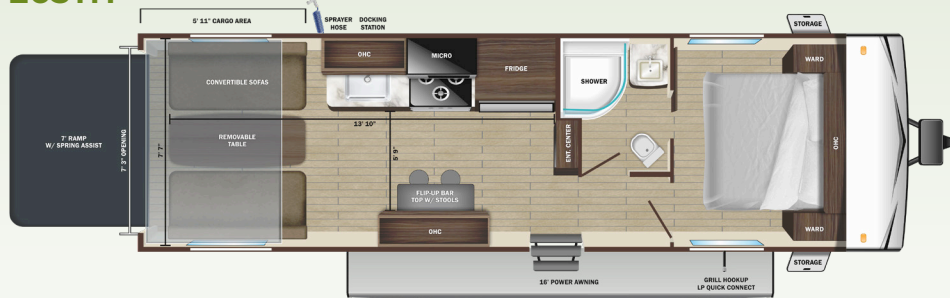
THEATER SEAT OPTION

## Dual Axle—Toy Hauler

### 25TH



### 263TH



## SPECIFICATIONS

(May Include Estimated Values)

	180BHS	19BH	182RB	188BHS**	20FBS	20MB	22MLS	26BH	26RLS	27BH**	27BHP	26BHS	28BHS	25TH**	263TH**
Unloaded Vehicle Weight (Eastern) (lbs.)	3,785	3,540	3,605	4,245	4,615	4,315	5,265	4,875	5,890	5,210	6,320	5,820	6,330	5,425	5,290
Unloaded Vehicle Weight (Western) (lbs.)	N/A	3,520	TBD	600	TBD	4,275	4,765	4,795	5,890	670	N/A	N/A	N/A	880	920
Dry Hitch Weight (Eastern) (lbs.)	405	395	380	5,300	480	530	500	645	750	7,000	765	730	760	8,750	7,600
Dry Hitch Weight(Western) (lbs.)	405	385	N/A	1,055	N/A	490	480	525	750	1,790	N/A	N/A	745	3,325	2,310
Gross Vehicle Weight Rating (Eastern) (GVWR)	4,900	4,995	4,650	23' 10"	6,250	6,000	6,700	6,850	7,600	30' 7"	7,995	7,500	7,900	30' 0"	30' 4"
Gross Vehicle Weight Rating (Western) (GVWR)	4,900	4,650	TBD	10' 7"	TBD	5,850	6,995	n/a	7,900	10' 6"	N/A	N/A	8,300	13' 0"	10' 6"
Cargo(Eastern) (Gross)	1,210	1,455	1,045	8' 0"	2,040	1,685	1,435	1,975	1,710	8' 0"	1,675	2,040	1,570	8' 0"	8' 0"
Cargo (Western)(Gross)	1,210	1,130	TBD	10' 6"	TBD	1,575	1,730	2,055	2,010	N/A	N/A	N/A	1,970	N/A	N/A
Exterior Length (Overall)	22' 2"	22' 4"	22' 11"	6' 9"	23' 8"	24' 6"	27' 6"	29' 6"	30' 1"	6' 9"	32' 1"	30' 8"	33' 9"	8' 4"	6' 9"
Exterior Height	10' 0"	9' 11"	9' 10"	26	10' 6"	9' 10"	10' 7"	9' 11"	10' 5"	48	10' 2"	10' 5"	10' 5"	48	48
Exterior Width	8' 0"	8' 0"	8' 0"	48	8' 0"	8' 0"	8' 0"	8' 0"	8' 0"	90	8' 0"	8' 0"	8' 0"	90	90
Exterior Width (Slides Out)	10' 1"	N/A	N/A	39	11'	N/A	10'	N/A	11' 0"	78	11"	11' 0"	11' 6"	39	39
Interior Height	6' 9"	6' 9"	6' 9"	39	6' 9"	6' 9"	6' 9"	6' 9"	6' 9"	39	6' 9"	6' 9"	6' 9"	39	39
Fresh Water Capacity (Gal.) (Eastern Built)*	20	26	26	20	48	48	48	48	42	60	48	48	48	60	60
Fresh Water Capacity (Gal.) (Western Built)*	30	42	36	15"	84	90	82	90	84	14"	N/A	80	90	14"	14"
Gray Waste Water Capacity (Gal.) (Eastern Built)	20	20	20	16'	39	39	40	32.5	39	16'	78	32.5	39	18'	16'
Gray Waste Water Capacity (Gal.) (Western Built)	20	20	20	48	32.5	32.5	40	32.5	40	90	N/A	32.5	40	90	90
Black Waste Water Capacity (Gal.)(Eastern Built)	20	20	20	39	39	39	40	32.5	39	78	40	32.5	39	39	39
Black Waste Water Capacity (Gal.) (Western Built)	20	20	20	39	39	32.5	40	32.5	40	39	N/A	32.5	40	39	39
LP Capacity (lbs.)	20	20	20	20	60	60	60	60	60	60	60	60	60	60	60
Tire Size (Eastern Built)	15"	15"	15"	15"	14"	14"	14"	14"	14"	14"	14"	14"	14"	14"	14"
Awning Size	11'	13'	13"	16'	12'	13'	18'	18'	19'	16'	18"	16'	18'	18'	16'

\*Includes water heater

\*\*Specifications, weights, measurements, and capacities above are from model year 2023 and are estimates only for model year 2025. Actual specs, weights, measurements, and capacities may be different for model year 2025 than what is listed above. For the most up-to-date model year 2025 specs, please speak with your local Starcraft dealer, visit <http://www.StarcraftRV.com>, and check the yellow sticker on the door of your Starcraft RV before purchasing, operating, and towing the RV.

# Autumn Ridge

## 2025 Travel Trailers

### STANDARD INTERIOR EQUIPMENT

- 8 cu. ft. 12V Refrigerator
- 75 lb. ball bearing drawer guides
- 81" interior height
- Ceiling mount bluetooth® speaker
- Flush floor slides with residential vinyl flooring (select models)
- Foot flush toilet
- Hidden hinge cabinet door hinges
- LED interior lighting
- Pleated blackout night shades
- Pocket-screwed lumbercore cabinet construction
- Pressed membrane kitchen countertops
- Range hood
- Residential high-rise kitchen faucet
- Single basin under-mount kitchen sink
- Solid hardwood cabinet doors
- Solid hardwood drawer fronts
- Storage below main bed
- USB charging port at beds and bunks

### STANDARD EXTERIOR EQUIPMENT

- 120 GFCI protected receptacle
- 5/8" main floor decking
- 96" exterior width
- Black front diamond plate protection
- Exterior docking center (dual axle models)
- Detachable power cords
- Fiberglass insulation
- Flexible LP lines
- Galvanized wheel wells
- Grab handle
- In-frame battery rack
- Magnetic baggage door catches
- Magnum Roof™ system
- PVC roofing membrane (limited lifetime warranty)
- Rain guttering with molded drip spouts
- Rear camera prep
- Safety bumper with drain hose carrier and end caps
- Self-adjusting electric brakes and E-Z Lube® axles
- Thermal Seal- enclosed, insulated, and heated underbelly and fully insulated roof with a PVC roofing membrane (dual axle models)
- Tinted safety-glass windows throughout

### CUSTOMER CONVENIENCE PACKAGE (Mandatory)

- 13,500 BTU roof mounted A/C
- 17" oven (dual axle models)
- 2-burner range with glass cover (single axle models)
- 3-burner range with glass cover (dual axle models)
- Dome style digital TV antenna
- Entrance door with window and shade prep
- Gas/electric water heater
- Microwave
- Nitrogen filled radial tires
- Powered awning with LED lighting
- Powered bathroom vent
- Residential vinyl flooring throughout
- Solid swing down step (main)
- Stabilizer jacks (4-dual axle models, 2-single axle models)
- Water heater bypass
- Xtend Solar I Package (200 watt solar panel with 30 amp controller)

### OPTIONS

- 14" Aluminum Rims 14" ( 182RB, 20MB, 20FBS, 22MLS, 26BH, 26BHS, 26RLS, 27BH, 28BHS, 263TH)
- 15" Aluminum Rims 15" (19BH, 180BHS, 188BHS, 25TH)
- 15,000 BTU A/C (dual axle models)
- 50 amp service with 2nd A/C (26BHS, 26RLS, 28BHS)
- Fiberglass Sidewalls (N/A 25TH, 263TH)
- Griddle with bumper bracket (20FBS, 26BH, 20MB, 26RLS, 182RB, 19BH, 180BHS)
- MOAB Pkg (Western built units only) (Aluminum Rims option N/A) (N/A 25TH, 263TH)
- Ramp Patio (25TH, 263TH)
- Smart TV
- Spare tire with carrier (mandatory on single axle models)
- Theater seat (26BHS, 28BHS, std. on 22MLS)



Go the distance with our **3-Year Limited Structural Warranty** plus a 1-Year Limited Manufacturer's Warranty—freedom from worry is your best travel companion.



**StarcraftRV.com**  
#CampingPureAndSimple

#### LOCAL DEALER INFO

**STARCRAFT**  
Starcraft RV – Part of the Jayco Family of Companies  
903 S. Main Street  
Middlebury, IN 46540 USA  
(800) 945-4787

Unloaded Vehicle Weight (UJV): Sometimes referred to as "Dry Weight," UJV means the typical weight of this trailer as built at the factory. The UJV, as used in product literature and other promotional materials, does not include cargo, fresh water, propane, options or dealer-installed accessories. Hitch Weight (HW): The hitch weight, as used in product literature and other promotional materials, does not include cargo, fresh water, propane, options or dealer-installed accessories. The addition of these types of items will either add to or subtract from the stated hitch weight. It is important for your safety and enjoyment that your tow vehicle be adequately sized and equipped to tow and handle the GVWR of the RV you select. Review weights and rating of your tow vehicle and consult a competent advisor for questions or advice. Whether you are new to RVing or a veteran, get a fee for the performance of your tow vehicle before heading out on the roadways. When you tow an RV, you must drive differently than when you drive a single vehicle. Practice hooking up, driving, backing up and braking in a safe environment or seek out professional instruction. Starcraft affixes a weight label to each RV which lists weight information for that vehicle. See specifications chart on the respective pages of this brochure.

Starcraft RV | 903 S. Main Street | Middlebury, IN 46540 | See dealer for further information and prices. All information in this brochure and on www.STARCRAFTRV.COM is the latest available at the time of publication approval. Starcraft RV reserves the right to make changes and to discontinue models without notice or obligation. Photography may show optional equipment or props used for decoration purposes only. RVs built for sale in Canada may differ to conform to Canadian codes. Starcraft and the S are registered trademarks of Jayco, Inc. Printed in U.S.A.