



Eagle



Serial #: 1UJCA0BTXS1WD0151
 Model: 321RSTS EAGLE FW

Model Year: 2025 Dealer Name: CAMPERLAND OF OKLAHOMA-SAPULPA
 9889 STATE HWY 66
 Sapulpa, OK 74066
 USA

Manufacturer's Suggested Retail Price \$105,277.00

TOTAL AMOUNT DOES NOT INCLUDE STATE AND LOCAL TAXES OR LICENSE FEES. THE PRICE SHOWN ABOVE MAY OR MAY NOT BE REPRESENTATIVE OF THE ACTUAL SELLING PRICE OF SIMILAR RECREATIONAL VEHICLES IN YOUR AREA.

Standard Equipment

Optional Equipment

THE FOLLOWING ITEMS ARE STANDARD ON THIS MODEL AT NO EXTRA CHARGE

OPTIONAL EQUIPMENT INSTALLED ON THIS VEHICLE BY MANUFACTURER

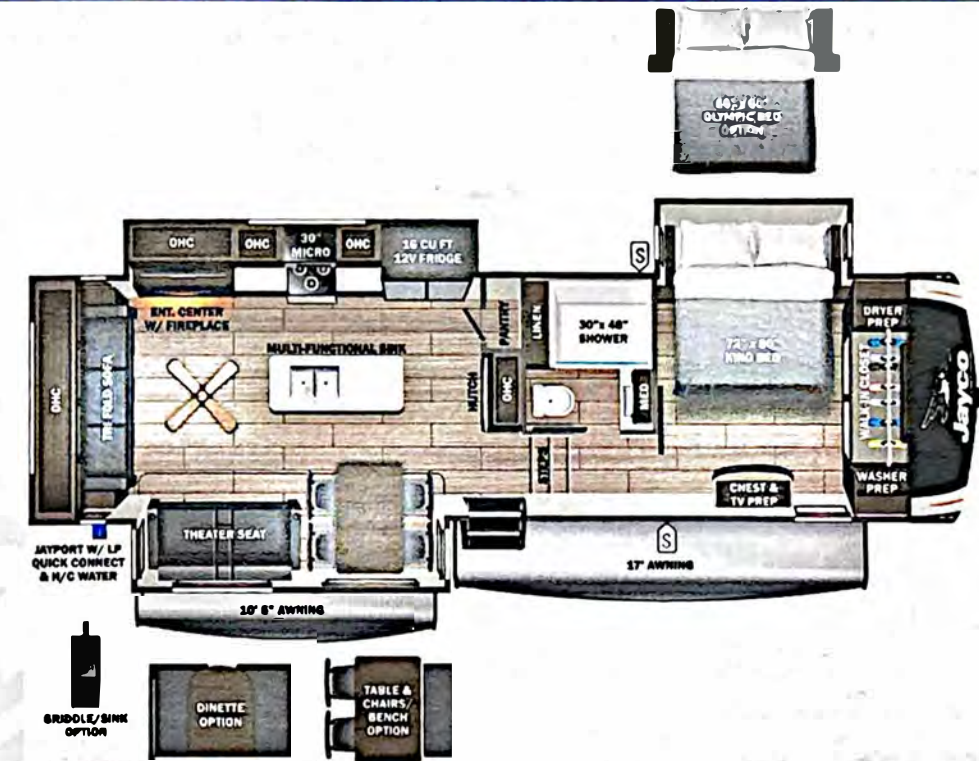
- STANDARD EXTERIOR EQUIPMENT**
- 1.5 in. fresh water drain valve
 - 5 in. Magnum Truss™ with plywood roof decking
 - 50-amp detachable power cord
 - Additional dump valve at termination
 - Alpha Ply TPO roof membrane (thickest roof membrane with limited lifetime warranty)
 - Auto-grade vinyl graphics
 - Automotive style front cap with max turn radius
 - Black tank flush
 - Climate Shield™ zero-degree tested weather protection:
 - * Fully enclosed and heated underbelly (ducted)
 - * 35,000 BTU furnace
 - * Double layer fiberglass batt insulation in ceiling and floor
 - * Double sided radiant barrier insulation (roof, floor and behind cap)
 - * PEX plumbing
 - Commercial grade rubber flooring in pass through area
 - Dual 30 lb. LP bottles
 - Factory installed roof ladder
 - Galvalume steel coated outside kitchens
 - HELIX Cooling System™ (industry exclusive):
 - * Jayco exclusive insulated duct design
 - * Directional and closeable A/C vents
 - * Larger return air vents with user accessible filters
 - Independent satellite and cable hookups (outside kitchens and/or pass through storage areas)
 - LED exterior lighting package
 - LED light and switch at termination
 - LED lighting in pass through area
 - LP quick connect for gas griddle (next to JayPort)
 - Metal slam latch baggage doors
 - Nautilus 2.5 water connections
 - Nitrogen filled under mount spare tire (16 in.)
 - Quick connect water connections (door side hot/cold and off door side cold only)
 - Slide topper/awning prep
 - Stronghold VBL™ walls (laminated sidewalls, rear walls and slide out walls)
- COMFORT PLUS PACKAGE (MANDATORY)**
- 15,000 BTU "Whisper Quiet" Bedroom A/C
 - 16 cu. ft. 12V refrigerator
 - 16 in. Endurance® Goodyear® wheels/tires
 - 50 in. 4K Ultra LED HD Smart TV in living room
 - 90 in. x 92 in. residential quilted bedspread
 - BMPPro Bluetooth® light switches throughout
 - Furniture cup holder tables (1 pair)
 - GE 24 in. residential stove with 4-burner cooktop
 - JAYCOMMAND® Smart RV System (Pro Tablet)
 - JaySMART™ (Safety Marker And Reverse Travel) exterior LED lights
 - King bed (72 in. x 80 in.) mattress with under-bed storage
 - Larger exterior baggage door sizes
 - LED fireplace with 5,000 BTU electric space heater
 - LED lights with dimmer switches and motion activated (throughout interior)
 - MORryde Safe-T-Rail grab handle
 - Overlander 1 Solar Package (200W panel and 30-amp solar controller)
 - Second power awning (dimnable LED lights)(select models)
 - Security monitor prep (rear, sides and entrance door)
 - Solid surface kitchen countertop
 - TPMS in Stem Monitoring (Tire Pressure Monitoring System)

- STANDARD INTERIOR EQUIPMENT**
- 100% No Floor Vents
 - 2-piece high gloss bathroom surround
 - 5/8 in. tongue-and-groove plywood flooring
 - 75 lb. full extension drawer guides
 - Bathroom skylight
 - Bedroom TV, satellite and cable prep
 - Extra 120V power outlets in kitchen and slide rooms (where applicable)
 - Gas strutted under bed storage
 - Handcrafted and glazed door/drawer fronts
 - Matte black kitchen faucet with pull-out sprayer
 - Medicine cabinet with custom framed mirror
 - NuVo H2O Water Treatment System (filters included)
 - Porcelain foot flush toilet
 - Residential vinyl flooring throughout (NO CARPET)
 - Solid hardwood slide fascia
 - Teak seat shower cap
 - Theater seating (select models)
 - Tri-fold hide-a-bed sofa with residential memory foam sleep surface (select models)
 - USB 12V charging ports (multiple locations throughout)
 - Water shutoff at all faucet locations
- CUSTOMER VALUE PACKAGE (MANDATORY)**
- 15,000 BTU "Whisper Quiet" A/C and bedroom A/C prep
 - 50-amp service with dual A/C ducts
 - 60,000 BTU on-demand tankless water heater
 - Custom machined aluminum rims
 - Electric patio awning (integrated dimmable LED lights with BMPPro Tablet)
 - Exterior "Blue Sync" Audio Connect with MB Quart Sound (TV and phone)
 - Hidden hinges on cabinet doors
 - Interior "Blue Sync" Audio Connect with MB Quart Sound (TV and phone)
 - Keyed-Alike™ lock system
 - MORryde Step Above™ entrance steps (main entrance) with blue LED light
 - Rain proof bathroom power vent
 - Rear 2 in. towing receiver with 4-pin connector
 - Upgraded friction hinge entrance door
 - Winegard Air 360 + antenna and router prep (NOW 5G)
- LUXURY PACKAGE (MANDATORY)**
- Blackout roller shades with reflective side throughout
 - Electric auto-leveling
 - GE 30 in. over-the-range black and stainless microwave with exhaust fan
 - Inverter pre-wire (multiple locations) ((7) 110 outlets) (6 USBs 12V)
 - JayPort 2 in. mount (for outside accessories)
 - Magnetic catches for all drawers and doors
 - Multi-Function "ALL in ONE" Stainless steel kitchen sink
 - Residential style glass shower door
 - Washer/dryer prep (select models)
- 5 STAR HANDLING PACKAGE (MANDATORY)**
- Dexter® ABS brake system with anti-sway
 - Dexter® Axles with NEV-R-Adjust® brakes and E-Z Lube® hubs
 - 16 in. Goodyear® Endurance® tires (load range E)
 - MORryde® CRE-3000™ rubberized suspension
 - Wet bolt fasteners with bronze bushings

Base price	77,735.00
USA STANDARDS	n/c
CUSTOMER VALUE PACKAGE	6,263.00
LUXURY PACKAGE	7,493.00
FIVE STAR HANDLING PACKAGE	5,993.00
COMFORT PLUS PACKAGE	6,750.00
OVERLANDER I SOLAR PACKAGE	n/c
STANDARD CAMPING PACKAGE	n/c
3RD AC	1,043.00
OBSERVATION SYSTEM PREP	n/c
TINTED SAFETY GLASS	n/c
WINDOWS	n/c
FREE STANDING TABLE & FOLDING CHAIRS(4)	n/c
KING BED	n/c

UNIT TOTAL 105,277.00

DEALER INSTALLED OPTIONS



UVW 11045 lbs **Sleeps** **Length** 36' 8"

DIMENSIONS

Exterior height:.....160.50"
 Exterior width:.....96.75"

WEIGHTS

GVWR:.....12900
 GAWR (front):.....6000
 GAWR (rear):.....6000
 Approx. Gross Cargo Carrying Capacity (GCC):.....1855

TIRES

Tire size (front):.....ST235/85R16E
 Tire size (mid):.....
 Tire size (rear):.....ST235/85R16E
 Tire size (spare):.....ST235/85R16E

CAPACITIES

Fresh water tank (gals.):...81.00
 Gray water tank (gals.):...87.00
 Black water/toilet tank (gals.):.....50.00
 Propane (lbs.):.....60
 Propane (gals.):.....14
 Water heater (gals.):.....0.19

SEATING & SLEEPING

Some dimensions may be rounded and may vary from the actual dimensions
 Weights may be estimated calculations and may vary from the actual weight
 - refer to the vehicle weight labels for actual weights***
 Floorplans, features and specifications are subject to change without notice.



25SP794N