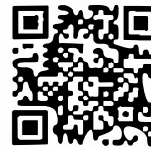




Jay Flight SLX

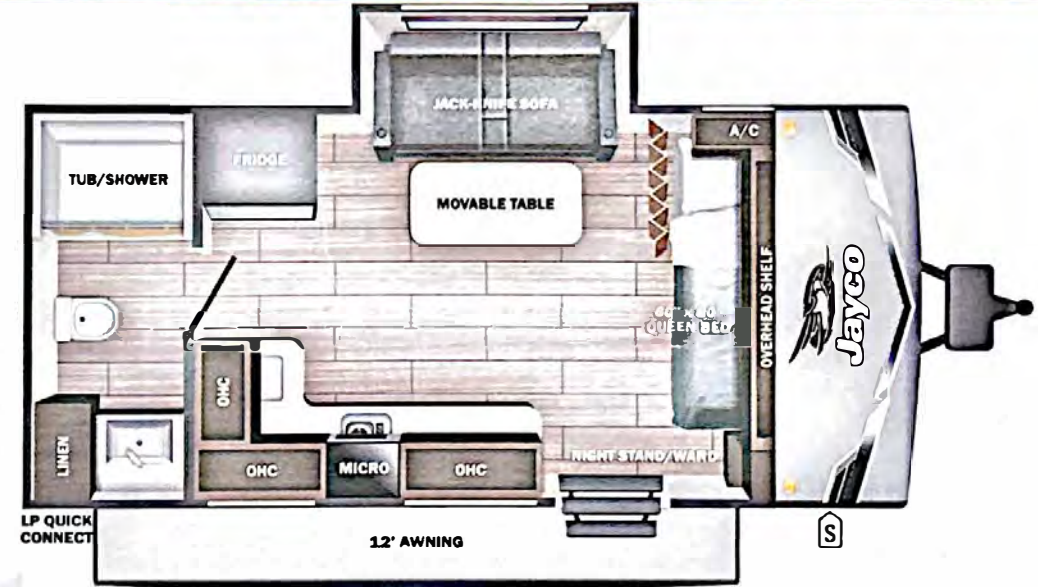


Serial #: 1UJBC0AJXS1YH0130
 Model: 160LK JAY FLIGHT SLX TT

Model Year: 2025 Dealer Name: CAMPERLAND OF OKLAHOMA-SAPULPA
 9889 STATE HWY 66
 Sapulpa, OK 74066
 USA

Manufacturer's Suggested Retail Price \$29,836.00

TOTAL AMOUNT DOES NOT INCLUDE STATE AND LOCAL TAXES OR LICENSE FEES. THE PRICE SHOWN ABOVE MAY OR MAY NOT BE REPRESENTATIVE OF THE ACTUAL SELLING PRICE OF SIMILAR RECREATIONAL VEHICLES IN YOUR AREA.



UVW 3650 lbs **Sleeps** **Length** 21' 5"

DIMENSIONS

Exterior height:.....123.00"

Exterior width:.....96.00"

WEIGHTS

GVWR:.....4750

GAWR (front):.....4400

GAWR (rear):.....0

Approx. Gross Cargo Carrying Capacity (GCCC):.....1100

TIRES

Tire size (front):.....ST225/75R15E

Tire size (mid):.....

Tire size (rear):.....

Tire size (spare):.....ST225/75R15E

CAPACITIES

Fresh water tank (gals.):....30.00

Gray water tank (gals.):....19.90

Black water/toilet tank (gals.):.....19.90

Propane (lbs.):.....20

Propane (gals.):.....4

Water heater (gals.):.....0.25

SEATING & SLEEPING

Standard Equipment

Optional Equipment

THE FOLLOWING ITEMS ARE STANDARD ON THIS MODEL AT NO EXTRA CHARGE

OPTIONAL EQUIPMENT INSTALLED ON THIS VEHICLE BY MANUFACTURER

STANDARD EXTERIOR EQUIPMENT

- 30-amp service
- 8,000 BTU wall mount A/C (single axle models)
- Axles with electric, self-adjusting brakes and easy-lube hubs
- Exterior cable TV hookup
- Fully-integrated A-frame
- Galvanized-steel, impact resistant wheel wells
- Large exterior downspouts
- LP quick connect (outside grill prep)
- Magnum Truss™ Roof System
- Nitrogen filled radial tires
- PVC tooling membrane (limited lifetime warranty)

STANDARD INTERIOR EQUIPMENT

- 300 lb. rated single bunk beds
- 600 lb. rated double bunk beds
- Digital TV antenna
- Heavy-duty, 75 lb., full-extension, steel ball-bearing drawer guides
- High rise kitchen faucet
- Marine-grade toilet with foot flush
- Plywood bed platforms
- Queen mattress
- Residential-style hidden cabinet door hinges
- Residential-style kitchen counter tops
- Shower curtain with curved shower track (select models)
- Solid hardwood cabinet doors with screwed stile construction and hidden hinges
- Vinyl flooring throughout
- Wood-trimmed mirror in bathroom

CUSTOMER VALUE PACKAGE (MANDATORY)

- 8 cu. ft. 12V refrigerator
- AM/FM/Bluetooth® stereo
- Backup camera prep
- Bathroom skylight
- Bathroom vent
- Detachable power cord
- Entry door with window and shade prep
- Fitted bed sheet
- G20 dark tinted privacy windows
- Keyed-Alike™ entry and baggage doors
- Large folding entry door grab handle
- LED interior and exterior lights
- Marine grade exterior stereo speakers
- Microwave oven
- On-demand tankless water heater
- Power awning with LED lights
- Range hood
- Solid Step® entry steps
- Spare tire with cover
- Stabilizer jacks
- Tub/shower surround
- Window shades

Base price	23,993.00
USA STANDARDS	n/c
CUSTOMER VALUE PACKAGE NO STX EDITION	5,250.00
13,500 BTU ROOF MOUNTED AC	593.00
METAL SIDEWALL	n/c
STANDARD RADIAL TIRES	n/c

UNIT TOTAL **29,836.00**

DEALER INSTALLED OPTIONS

259P785N

Some dimensions may be rounded and may vary from the actual dimensions

***Weights may be estimated calculations and may vary from the actual weight

- refer to the vehicle weight labels for actual weights***

Floorplans, features and specifications are subject to change without notice.

