



# Jay Feather

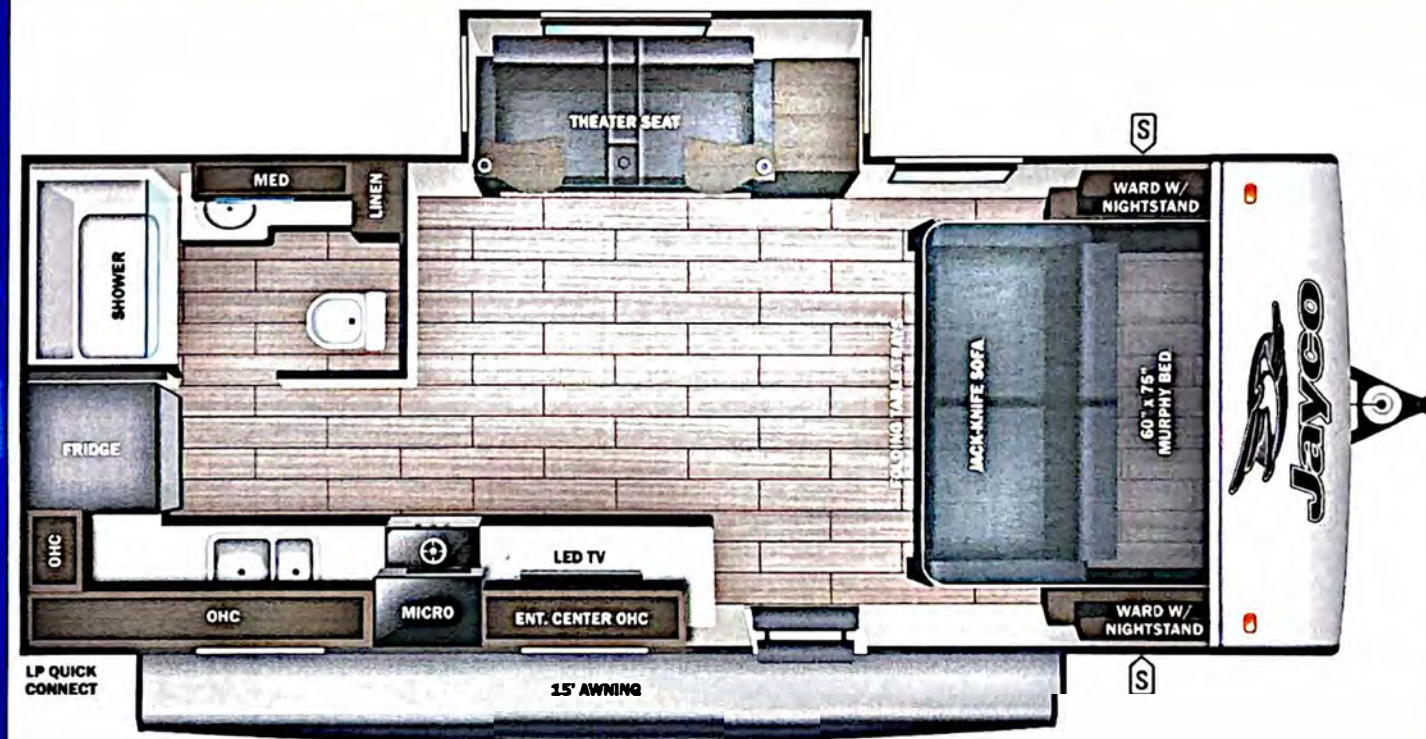


Serial #: 1UJBB0BK6S1J70149  
 Model: 19MRK JAY FEATHER TT

Model Year: 2025 Dealer Name: CAMPERLAND OF OKLAHOMA-SAPULPA  
 9889 STATE HWY 66  
 Sapulpa, OK 74066  
 USA

**Manufacturer's Suggested Retail Price \$50,078.00**

TOTAL AMOUNT DOES NOT INCLUDE STATE AND LOCAL TAXES OR LICENSE FEES. THE PRICE SHOWN ABOVE MAY OR MAY NOT BE REPRESENTATIVE OF THE ACTUAL SELLING PRICE OF SIMILAR RECREATIONAL VEHICLES IN YOUR AREA.



## Standard Equipment

## Optional Equipment

THE FOLLOWING ITEMS ARE STANDARD ON THIS MODEL AT NO EXTRA CHARGE

OPTIONAL EQUIPMENT INSTALLED ON THIS VEHICLE BY MANUFACTURER

- STANDARD EXTERIOR EQUIPMENT**
- 1.5 in. fresh water drain valve
  - 18 in. rear roof ladder - factory installed
  - 2 in. Stronghold VBL™ floor with 2 lb. density foam
  - Stronghold VBL™ walls with double-sided Azdel composite (sidewalls, rear walls and slide out boxes)
  - Aerodynamic, rounded front profile with aluminum framing
  - American-made Norco Z-frame with integrated A-frame
  - Automotive-style aluminum rims
  - Battery quick-disconnect
  - Dark-tinted safety-glass windows
  - Exterior TV bracket with 120V and cable hook-ups
  - Front diamond plating with Azdel backer
  - Front molded decorative cap (select models)
  - Galvanized steel and impact resistant wheel wells
  - Keyed-Alike™ locking system
  - Magnum Truss™ Roof System
  - Marine grade exterior speakers
  - Outdoor camp kitchen with galvanized steel bases (select models)
  - PVC roofing membrane (limited lifetime warranty)
  - Swing-out entry door assist handle

- STANDARD INTERIOR EQUIPMENT**
- 4 in. high-density dinette cushions with vinyl backing
  - 4 in. soft-touch bunk mats (select models)
  - 60 x 80 in. residential queen beds (60 x 76 in. in Murphy bed models)
  - 75 lb. full extension drawer guides
  - Bathroom skylight
  - Decorative backsplash
  - Decorative roller shades with reflective barrier
  - Directional and closeable A/C vents
  - Gas-strutted under bed storage (most models)
  - Handcrafted, hardwood door/drawer fronts
  - Hidden-hinged cabinet doors
  - High output auto-ignition LP gas furnace
  - LED lighting throughout
  - Plywood dinette, bed, bunk and shower/tub bases
  - Powered roof vents in bathroom and main bedroom (most models)
  - Residential style seamless countertops throughout
  - Residential vinyl flooring throughout
  - Screwed and glued cabinet stiles
  - USB charging ports (multiple locations throughout)

Base price	40,028.00
USA STANDARDS	n/c
CUSTOMER VALUE PACKAGE	6,000.00
JAY SPORT PACKAGE	3,750.00
OVERLANDER I SOLAR PACKAGE	n/c
15,000 BTU AC	300.00
NO FIREPLACE	n/c
20# LP GAS BOTTLES	n/c

- CUSTOMER VALUE PACKAGE (MANDATORY)**
- American-made nitro-filled Goodyear® radial tires with self-adjusting electric brakes
  - 13,500 BTU roof-mounted A/C
  - 20 lb. LP gas bottles with auto-regulator and ABS cover
  - 55 gal. fresh water tank
  - Automotive-style aluminum rims
  - Black tank flush
  - Detachable power cord
  - Inverter pre-wire (2 bedroom nightstand outlets, main TV and outlet for outside kitchen fridge)
  - Max-length power awning with LED light
  - On-demand 60,000 BTU water heater
  - Power tongue jack
  - Rear 2 in. receiver
  - Rock Solid Stabilizer System
  - Side and rear back-up camera prep
  - Under-mount spare tire

- JAY SPORT PACKAGE (MANDATORY)**
- 11 cu. ft. 12V fridge
  - App monitored TPMS
  - Climate Shield (zero to 100 degree tested weather insulation package)
  - Front slam-latch baggage doors
  - Invision appliance package
  - LCI Solid Step fold-down aluminum tread steps on main entry door
  - LED smart TV
  - MAXXAIR® power roof vent (main living area)
  - Modern graphics package with dual-colored sidewall
  - Overlander 1 Solar Package: (1) 200W solar panel and 30-amp digital controller
  - Porcelain foot-flush toilet
  - Stainless steel kitchen & bathroom sink

UNIT TOTAL **50,078.00**

DEALER INSTALLED OPTIONS

**UVW**  
 5060 lbs

**Sleeps**

**Length**  
 23' 3.88"

### DIMENSIONS

Exterior height:.....128.25"  
 Exterior width:.....96.00"  
**WEIGHTS**  
 GVWR:.....6400  
 GAWR (front):.....3500  
 GAWR (rear):.....3500  
 Approx. Gross Cargo Carrying Capacity (GCCC):.....1340

### CAPACITIES

Fresh water tank (gals.):...55.00  
 Gray water tank (gals.):...38.00  
 Black water/toilet tank (gals.):.....30.50  
 Propane (lbs.):.....40  
 Propane (gals.):.....9  
 Water heater (gals.):.....0.25

### TIRES

Tire size (front):.....ST205/75R14D  
 Tire size (mid):.....  
 Tire size (rear):.....ST205/75R14D  
 Tire size (spare):.....ST205/75R14D

### SEATING & SLEEPING

\*\*\*Some dimensions may be rounded and may vary from the actual dimensions\*\*\*  
 \*\*\*Weights may be estimated calculations and may vary from the actual weight - refer to the vehicle weight labels for actual weights\*\*\*  
 Floorplans, features and specifications are subject to change without notice.



255P782N