



# Jay Feather Air

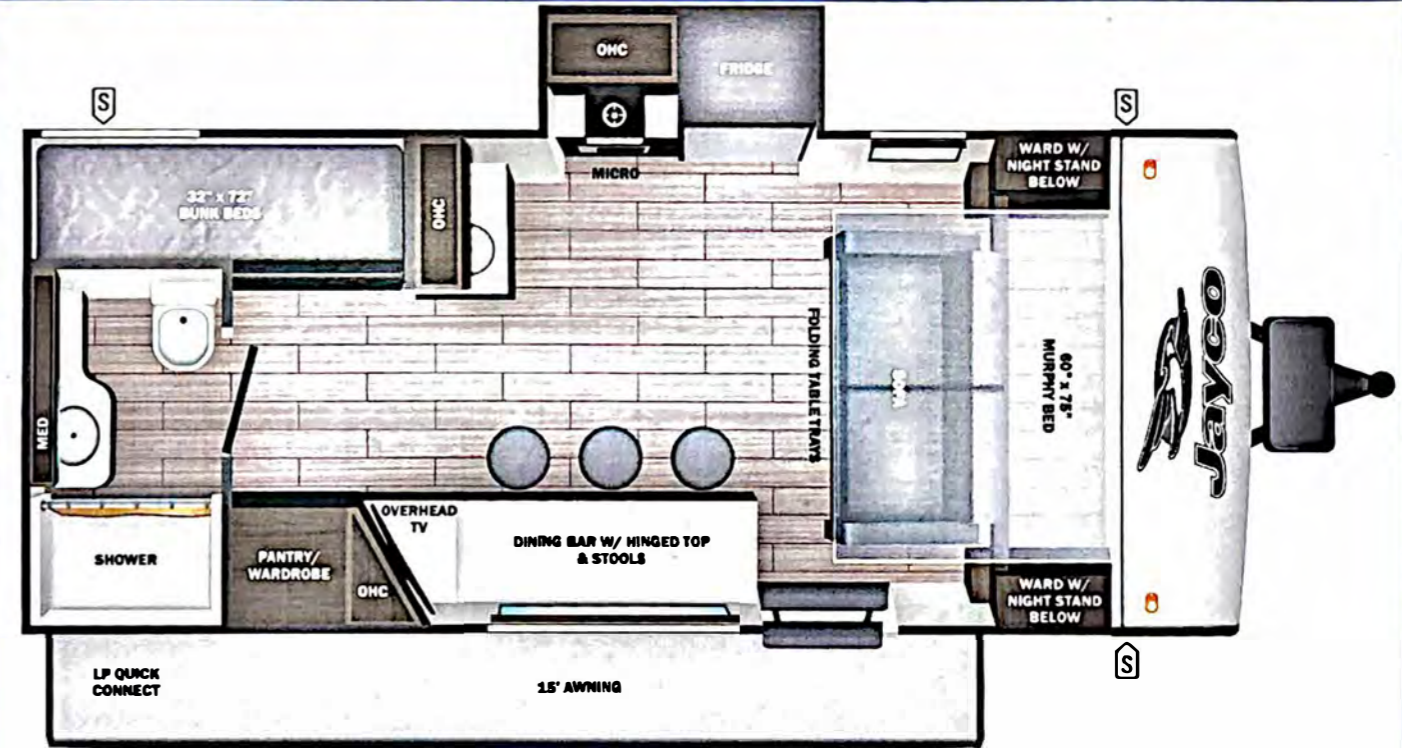


Serial #: 1UJBB0AK6S1HA0183  
 Model: 18MBH JAY FEATHER AIR TT

Model Year: 2025 Dealer Name: CAMPERLAND OF OKLAHOMA LLC  
 8347 EAST 11TH STREET  
 TULSA, OK 74112  
 USA

**Manufacturer's Suggested Retail Price \$46,035.00**

TOTAL AMOUNT DOES NOT INCLUDE STATE AND LOCAL TAXES OR LICENSE FEES. THE PRICE SHOWN ABOVE MAY OR MAY NOT BE REPRESENTATIVE OF THE ACTUAL SELLING PRICE OF SIMILAR RECREATIONAL VEHICLES IN YOUR AREA.



**UVW** 4490 lbs **Sleeps** **Length** 23' 0"

### DIMENSIONS

Exterior height:.....129.50"  
 Exterior width:.....95.50"  
**WEIGHTS**  
 GVWR:.....5650  
 GAWR (front):.....5145  
 GAWR (rear):.....0  
 Approx. Gross Cargo Carrying Capacity(GCCC):.....1160

### CAPACITIES

Fresh water tank (gals.):...55.00  
 Gray water tank (gals.):...38.00  
 Black water/toilet tank (gals.):.....38.00  
 Propane (lbs.):.....40  
 Propane (gals.):.....9  
 Water heater (gals.):.....0.25

### SEATING & SLEEPING

### TIRES

Tire size (front):.....ST225/75R15E  
 Tire size (mid):.....  
 Tire size (rear):.....  
 Tire size (spare):.....ST225/75R15E

## Standard Equipment

THE FOLLOWING ITEMS ARE STANDARD ON THIS MODEL

## Optional Equipment

OPTIONAL EQUIPMENT INSTALLED ON THIS VEHICLE BY MANUFACTURER

Base price	35,985.00
USA STANDARDS	n/c
CUSTOMER VALUE PACKAGE	6,000.00
JAY AIR PACKAGE	3,750.00
OVERLANDER I SOLAR PACKAGE	n/c
15,000 BTU AC	300.00
20# LP GAS BOTTLES	n/c
GOODYEAR ENDURANCE TIRES	n/c

UNIT TOTAL **46,035.00**

DEALER INSTALLED OPTIONS

- STANDARD EXTERIOR EQUIPMENT**
- 1.5 in. fresh water drain valve
  - 18 in. rear roof ladder - factory installed
  - 2 in. Stronghold VBL™ floor with 2 lb. density foam
  - Stronghold VBL™ walls with double-sided Azdel composite (sidewalls, rear walls and slide out boxes)
  - Aerodynamic, rounded front profile with aluminum framing
  - American-made Norco Z-frame with integrated A-frame
  - Automotive-style aluminum rims
  - Battery quick-disconnect
  - Dark-tinted safety-glass windows
  - Exterior TV bracket with 120V and cable hook-ups
  - Front diamond plating backed with Azdel
  - Galvanized steel and impact resistant wheel wells
  - Keyed-Alike™ locking system
  - Magnum Truss™ Roof System
  - Mounted camera bracket for pre-wired side and rear back-up prep
  - PVC roofing membrane (limited lifetime warranty)
  - Swing-out entry door assist handle

- JAY AIR PACKAGE (MANDATORY)**
- 11 cu. ft. 12V fridge
  - 2 in. rear receiver prep
  - App monitored TMPS
  - Climate Shield (zero to 100 degree tested weather insulation package)
  - Invision appliance package
  - LCI Solid Step fold-down aluminum tread steps on main entry door
  - LED smart TV
  - MAXXAIR® power roof vent (main living area)
  - Modern graphics package with dual-colored sidewall
  - Overlander 1 Solar Package: (1) 200W solar panel and 30-amp digital controller
  - Stainless steel kitchen & bathroom sink

25-22607N

\*\*\*Some dimensions may be rounded and may vary from the actual dimensions\*\*\*  
 \*\*\*Weights may be estimated calculations and may vary from the actual weight - refer to the vehicle weight labels for actual weights\*\*\*  
 Floorplans, features and specifications are subject to change without notice.

