



# Jay Flight SLX



Serial #: 1UJBC0BP2S1YW0764  
 Model: 261BHS JAY FLIGHT SLX TT

Model Year: 2025 Dealer Name: CAMPERLAND OF OKLAHOMA LLC  
 8347 EAST 11TH STREET  
 TULSA, OK 74112  
 USA

**Manufacturer's Suggested Retail Price \$39,292.00**

TOTAL AMOUNT DOES NOT INCLUDE STATE AND LOCAL TAXES OR LICENSE FEES. THE PRICE SHOWN ABOVE MAY OR MAY NOT BE REPRESENTATIVE OF THE ACTUAL SELLING PRICE OF SIMILAR RECREATIONAL VEHICLES IN YOUR AREA.

## Standard Equipment

THE FOLLOWING ITEMS ARE STANDARD ON THIS MODEL

- STANDARD EXTERIOR EQUIPMENT**
- 30-amp service
  - 8,000 BTU wall mount A/C (single axle models)
  - Axles with electric, self-adjusting brakes and easy-lube hubs
  - Exterior cable TV hookup
  - Fully-integrated A-frame
  - Galvanized-steel, impact resistant wheel wells
  - Large exterior downspouts
  - LP quick connect (outside grill prep)
  - Magnum Truss™ Roof System
  - Nitrogen filled radial tires
  - PVC roofing membrane (limited lifetime warranty)

- STANDARD INTERIOR EQUIPMENT**
- 300 lb. rated single bunk beds
  - 600 lb. rated double bunk beds
  - Digital TV antenna
  - Heavy-duty, 75 lb., full-extension, steel ball-bearing drawer guides
  - High rise kitchen faucet
  - Marine-grade toilet with foot flush
  - Plywood bed platforms
  - Queen mattress
  - Residential-style hidden cabinet door hinges
  - Residential-style kitchen countertops
  - Shower curtain with curved shower track (select models)
  - Solid hardwood cabinet doors with screwed stile construction and hidden hinges
  - Vinyl flooring throughout
  - Wood-trimmed mirror in bathroom

- CUSTOMER VALUE PACKAGE (MANDATORY)**
- 8 cu. ft. 12V refrigerator
  - AM/FM/Bluetooth® stereo
  - Backup camera prep
  - Bathroom skylight
  - Bathroom vent
  - Detachable power cord
  - Entry door with window and shade prep
  - Fitted bed sheet
  - G20 dark tinted privacy windows
  - Keyed-Alike™ entry and baggage doors
  - Large folding entry door grab handle
  - LED interior and exterior lights
  - Marine grade exterior stereo speakers
  - Microwave oven
  - On-demand tankless water heater
  - Power awning with LED lights
  - Range hood
  - Solid Step® entry steps
  - Spare tire with cover
  - Stabilizer jacks
  - Tub/shower surround
  - Window shades

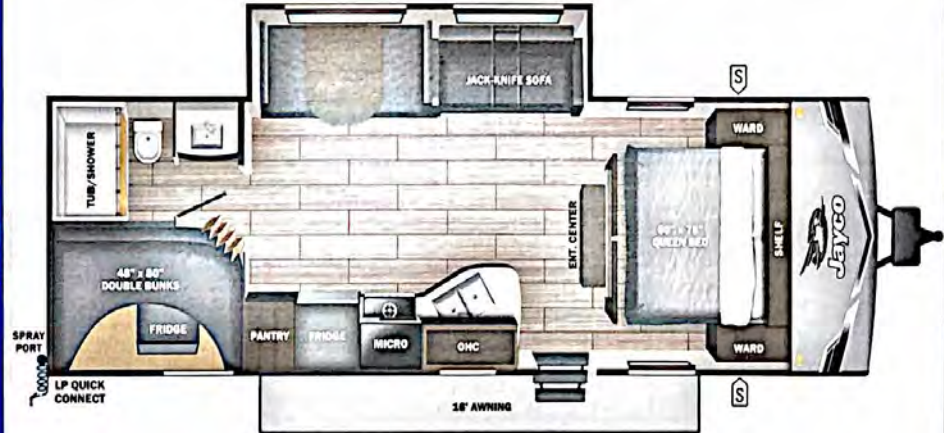
## Optional Equipment

OPTIONAL EQUIPMENT INSTALLED ON THIS VEHICLE BY MANUFACTURER

Base price	32,406.00
USA STANDARDS	n/c
CUSTOMER VALUE PACKAGE	5,250.00
NO ELITE PACKAGE	n/c
15,000 BTU ROOF MOUNTED AC	300.00
2ND AC	893.00
50 AMP SERVICE	443.00
BLACK SPOKE RIMS	n/c
JACK KNIFE SOFA	n/c

UNIT TOTAL **39,292.00**

DEALER INSTALLED OPTIONS



**UVW**  
6075 lbs



**Sleeps**



**Length**  
30' 4"

### DIMENSIONS

Exterior height:	133.00"
Exterior width:	96.00"
<b>WEIGHTS</b>	
GVWR:	7600
GAWR (front):	3500
GAWR (rear):	3500
Approx. Gross Cargo Carrying Capacity (GCCC):	1525

### CAPACITIES

Fresh water tank (gals.):	52.00
Gray water tank (gals.):	39.00
Black water/toilet tank (gals.):	39.00
Propane (lbs.):	40
Propane (gals.):	9
Water heater (gals.):	0.25

### SEATING & SLEEPING

### TIRES

Tire size (front):	ST205/75R14D
Tire size (mid):	
Tire size (rear):	ST205/75R14D
Tire size (spare):	ST205/75R14D

\*\*\*Some dimensions may be rounded and may vary from the actual dimensions\*\*\*

\*\*\*Weights may be estimated calculations and may vary from the actual weight - refer to the vehicle weight labels for actual weights\*\*\*

Floorplans, features and specifications are subject to change without notice.

**2+3**  
YEAR | YEAR  
LIMITED | STRUCTURAL  
**WARRANTY**

25-22578N