



Pinnacle



Serial #: 1UJCF0BV7S1RL0107
 Model: 36FBTS PINNACLE FW

Model Year: 2025 Dealer Name: CAMPERLAND OF OKLAHOMA LLC
 8347 EAST 11TH STREET
 TULSA, OK 74112
 USA

Standard Equipment

Optional Equipment

THE FOLLOWING ITEMS ARE STANDARD ON THIS MODEL

OPTIONAL EQUIPMENT INSTALLED ON THIS VEHICLE BY MANUFACTURER

STANDARD EXTERIOR EQUIPMENT

- (3) 40 lb. LP propane bottles with auto regulator (120 lb. max LP system)
- 102 in. widebody construction
- 12 in. structural steel I-beam with 10 in. drop frame
- 120V heat blankets on all tanks plus 12V heat tape on fresh water line
- 3,000 lb. tow hitch with 4-way pin
- Battery disconnect
- Built in sewer hose cammer
- Climate Shield™ zero-degree tested:
 - * 40,000 BTU output furnace
 - * Double layer fiberglass batt insulation (roof/floor)
 - * Fully enclosed and heated underbelly (ducted)
 - * PEX plumbing, 2 in. block foam and reflective foil
- Custom automotive-grade vinyl exterior graphics
- Digital TV antenna with 5G Wi-Fi extender
- Exterior marine-grade speakers with Bluetooth® controller
- Frameless dark tinted safety-glass windows
- Fully enclosed, universal docking center:
- * Black tank flush
- * Independent satellite wiring
- * Quick-connect outside shower
- * Whole coach cable hookups
- * Whole coach cable hookups
- * Wintenzation and sanitation hookups
- JaySMART™ (Safety Markers And Reverse Travel) LED lighting (patented)
- Magnum Truss™ XL6™ Roof System (strongest tested roof in the industry) with Alpha roof membrane system with limited lifetime warranty
- Painted fiberglass front and rear cap with clear coat
- Pass-through storage, Siam-latch™ baggage doors
- Skirt metal enclosed drop frame
- Stronghold VBL™ aluminum framed and vacuum bond laminated gel coated fiberglass exterior walls (including slide room end walls)
- Under-mounted spare tire
- Water heater bypass

LUXURY PACKAGE (MANDATORY)

- 2nd electric patio awning with integrated RGB LED lights (multi-colored with remote control)
- 32 in. 4K outside Smart LED TV
- 32 in. 4K Smart LED bedroom TV
- 6-point hydraulic auto-leveling system
- Digital TV antenna with 5G Wi-Fi prep
- Central vacuum system with dust port
- Day/night roller shades in living room
- Frameless dark tinted safety-glass windows
- Free-standing roll top (no pedestal) table
- GE 21 cu. ft. residential refrigerator, 1800W in
- GE Profile Series 30 in. residential convection microwave with built in air fryer
- GE Profile Series residential 24 in. range
- JAYCOMMAND® Smart RV System
- LED fireplace with electric space heater
- MORryde® StepAbove™ entrance steps
- Oversized multi-battery compartment (industry leading room for 4-6 batteries)
- Powered 50-amp cord reel
- Residential solid-surface kitchen countertop
- Residential walk-in shower with shampoo/soap holder, teak seat and shower tower
- Solid hardwood cabinet doors, stiles, and fascia
- Under-sink dishwasher
- Washer/dryer prep
- Pull out "Roll Top" dinette with two free standing chairs and two folding chairs
- Residential NuVo H2O whole coach water treatment with water softening system and triple cartridge filters

STANDARD INTERIOR EQUIPMENT

- 12V charging station
- 5/8 in. tongue-and-groove joined plywood floor and 3/8 in. plywood roof decking
- Bathroom skylight
- Built in spice rack in kitchen cabinet (select models)
- Built-in laundry hamper in wardrobe (select models)
- Carbon monoxide and LP detector
- Cedar-lined front wardrobe closet
- Ceiling fan (select models)
- CPAP prepped bedroom
- Extra 120V power outlets in kitchen and slide rooms
- Flip-up countertop extension/bar top (select models)
- Flip-up hidden storage in bedroom chest of drawers (n/a 38FLGS)
- Flip-up tabletop storage next to tri-fold sofa (select models)
- Gas-strutted under-bed storage
- Handcrafted hardwood glazed doors, stiles, and drawers
- Hidden hinges, magnet latches and soft close cabinet doors and drawers
- Integrated under-mount sink and lever faucet in main bath
- LED accent lighting above slideouts
- LED backlit custom framed mirror and medicine cabinet (most models)
- LED interior lighting throughout
- No in floor heat ducts throughout coach
- Pantry with adjustable shelves and pull out drawers includes 120V outlet (most models)
- Porcelain toilet with foot flush
- Removable tray tables at theater seats
- Residential "Do it all" sink with pull-out kitchen faucet, glass rinse, and vegetable rinse
- Residential dove tail jointed drawers throughout
- Residential quilted bedspread and pillows
- "Shoe garage" in hallway step (select models)
- Soft close, heavy-duty, 75 lb. full extension, steel ball-bearing drawer guides
- Solid hardwood slide fascia
- Stain protected fabric on all furniture
- Toe kick nightlights in bedroom, bathroom and kitchen
- Tri-fold hide-a-bed sofa with sleep surface (select models)
- Vinyl flooring (made in the USA) throughout including slide rooms

CUSTOMER VALUE PACKAGE (MANDATORY)

- 15,000 BTU "Whisper Quiet" A/C (bedroom)
- 15,000 BTU "Whisper Quiet" A/C with heat pump (main)
- 16 gal. gas/electric DSI water heater
- 50 in. 4K SMART LED HDTV with fully digital HDMI® output and two additional HDMI® cables
- Backup, main entrance door and side observation security camera prep (includes a power switch in the bedroom to use the optional 7 in. monitor for security)
- Custom machined aluminum rims
- Electric patio awning with integrated RGB LED lights (multi-colored with remote control)
- Hidden hinges, magnet latches, and soft close cabinet doors
- JBL® home entertainment system with sound bar and wireless subwoofer
- Keyed-Alike™ lock system (single key for all doors/locks)
- MORryde® Safe-T-Rail grab handle
- Residential king (72 in. x 80 in.) mattress with under-bed storage
- Rooftop and ground solar prep
- Wireless remote control system (includes Bluetooth® wireless interior controls) with dimmer switches

5 STAR HANDLING PACKAGE (MANDATORY)

- 17.5 in. 16 ply 'H' rated Uniroyal tires
- Dexter® Axles with ABS and Tow Assist - includes Nev-R-Adjust® brakes and E-Z Lube® hubs
- MORryde® LRE-4000™ rubberized suspension
- MORryde® rubber pin box
- Wet bolt fasteners, bronze bushings and 4k lb. leaf springs

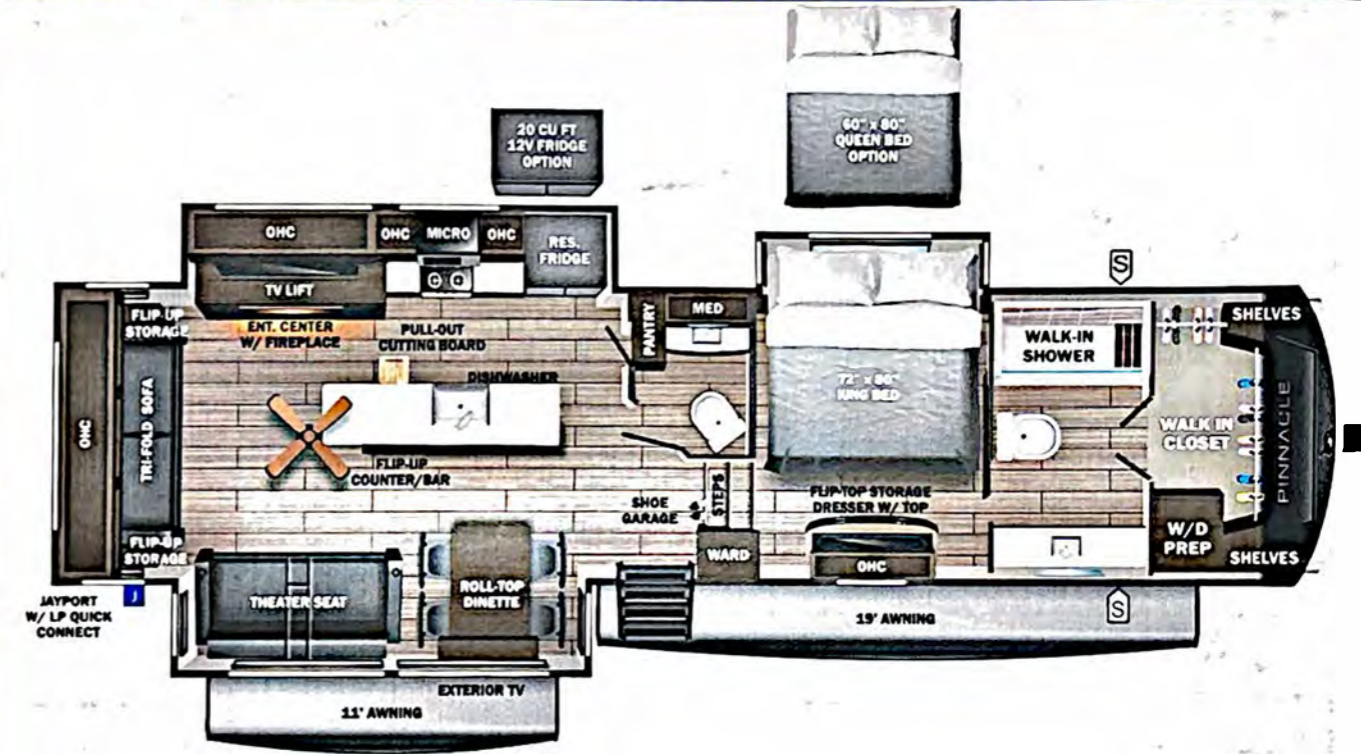
Base price	123,975.00
VINTAGE FARMHOUSE DECOR	n/c
MIDNIGHT GOLD FULL BODY PAINT	14,543.00
USA STANDARDS	n/c
CUSTOMER VALUE PACKAGE	4,500.00
PINNACLE LUXURY PACKAGE	12,450.00
FIVE STAR HANDLING PACKAGE	5,993.00
OVERLANDER II SOLAR PACKAGE	1,943.00
3RD AC 15,000 BTU IN LIVING ROOM	1,193.00
21 CU. FT. RESIDENTIAL REFRIGERATOR WITH INVERTER	n/c
GENERATOR LP PREP	743.00
GAS/ELECTRIC DSI WATER HEATER	n/c
BACKUP, SIDE AND ENTRY DOOR OBSERVATION CAMERA W/7" MONITOR	1,493.00
TINTED SAFETY GLASS WINDOWS	n/c
NO AWNING	n/c
ELECTRONIC DRUM BRAKES	n/c
KING BED	n/c

UNIT TOTAL 166,833.00

DEALER INSTALLED OPTIONS

Manufacturer's Suggested Retail Price \$166,833.00

TOTAL AMOUNT DOES NOT INCLUDE STATE AND LOCAL TAXES OR LICENSE FEES. THE PRICE SHOWN ABOVE MAY OR MAY NOT BE REPRESENTATIVE OF THE ACTUAL SELLING PRICE OF SIMILAR RECREATIONAL VEHICLES IN YOUR AREA.



UVW 14795 lbs **Sleeps** **Length** 40' 6.25"

DIMENSIONS

- Exterior height:.....159.50"
- Exterior width:.....102.00"
- GVWR:.....17500
- GAWR (front):.....8000
- GAWR (rear):.....8000
- Approx. Gross Cargo Carrying Capacity(GCCC):.....2705

CAPACITIES

- Fresh water tank (gals.):...75.00
- Gray water tank (gals.):...87.00
- Black water/toilet tank (gals.):...87.00
- Propane (lbs.):.....120
- Propane (gals.):.....28
- Water heater (gals.):.....16.00

TIRES

- Tire size (front):.....215/75R17.5H
- Tire size (mid):.....
- Tire size (rear):.....215/75R17.5H
- Tire size (spare):.....215/75R17.5J

Some dimensions may be rounded and may vary from the actual dimensions

***Weights may be estimated calculations and may vary from the actual weight

- refer to the vehicle weight labels for actual weights***

Floorplans, features and specifications are subject to change without notice.



25-22513N