



Jay Feather Micro

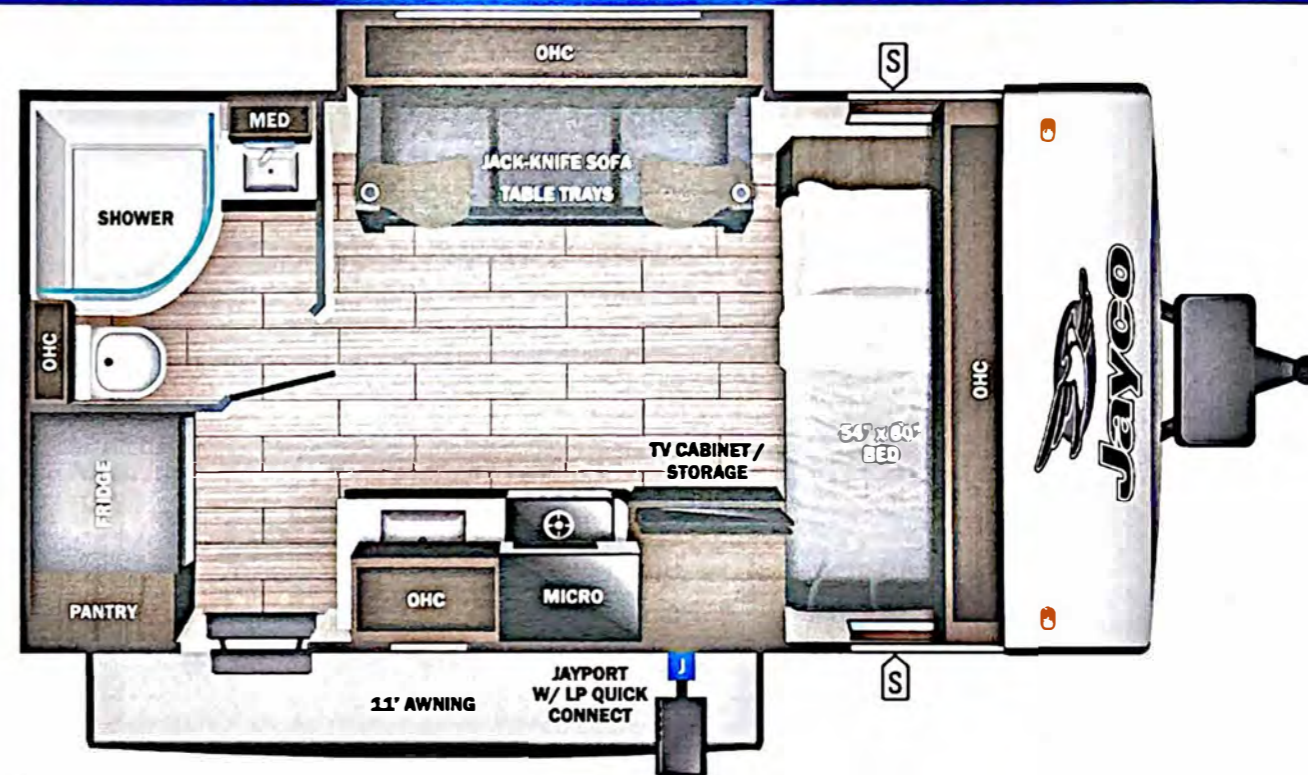


Serial #: 1UJBB0AH2S1JG0137
 Model: 166FBS JAY FEATHER MICRO TT

Model Year: 2025 Dealer Name: CAMPERLAND OF OKLAHOMA LLC
 8347 EAST 11TH STREET
 TULSA, OK 74112
 USA

Manufacturer's Suggested Retail Price \$46,936.00

TOTAL AMOUNT DOES NOT INCLUDE STATE AND LOCAL TAXES OR LICENSE FEES. THE PRICE SHOWN ABOVE MAY OR MAY NOT BE REPRESENTATIVE OF THE ACTUAL SELLING PRICE OF SIMILAR RECREATIONAL VEHICLES IN YOUR AREA.



Standard Equipment

Optional Equipment

THE FOLLOWING ITEMS ARE STANDARD ON THIS MODEL AT NO EXTRA CHARGE

OPTIONAL EQUIPMENT INSTALLED ON THIS VEHICLE BY MANUFACTURER

- STANDARD EXTERIOR EQUIPMENT**
- 1.5 in. fresh water drain valve
 - 2 in. Stronghold VBL™ floor with 2 lb. density foam
 - Stronghold VBL™ roof
 - Stronghold VBL™ walls with double-sided Azdel composite (sidewalls, rear walls and slide out boxes)
 - Aerodynamic, rounded front profile with aluminum framing
 - American-made Norco Z-frame with integrated A-frame
 - Automotive-style aluminum rims
 - Battery quick-disconnect
 - Black tank flush
 - Dark-tinted safety-glass windows
 - Exterior TV bracket with 120V and cable hook-ups
 - Front and rear diamond plating backed with Azdel
 - Keyed-Alike™ lock system
 - LCI Solid Step fold-down aluminum tread steps on main entry door
 - Manne grade exterior speakers
 - Modern graphics package with dual-colored sidewall
 - PVC roofing membrane (limited lifetime warranty)
 - Reinforced steel wheel wells
 - Swing-out entry door assist handle
- JAY PRO PACKAGE (MANDATORY)**
- 11 cu. ft. 12V fridge
 - 16 in. American-made Goodyear® off-road tires with self-adjusting electric brakes
 - 18 in. rear-mounted roof ladder - factory installed
 - 32 in. 12V LED TV with built-in sound bar and AM/FM/Bluetooth®
 - App monitored TPMS
 - Climate Shield (zero to 100 degree tested weather insulation package)
 - Front slam-latch baggage doors
 - Inverter pre-wire
 - Overlander 1 Solar Package: (1) 200W solar panel and 30-amp digital controller
 - Rear 2 in. receiver
 - Rubber-torsion axle

- STANDARD INTERIOR EQUIPMENT**
- 4 in. high-density dinette cushions with vinyl backing
 - 4 in. soft-touch bunk mats (select models)
 - 75 lb. full extension drawer guides
 - Bathroom skylight
 - Decorative backsplash
 - Decorative roller shades with reflective barrier
 - Handcrafted, hardwood door/drawer fronts
 - Hidden-hinged cabinet doors
 - High output auto-ignition LP gas furnace
 - LED lighting throughout
 - Plywood dinette, bed, bunk and shower/tub bases
 - Residential vinyl flooring throughout
 - Residential-style seamless countertops throughout
 - Screwed and glued cabinet stiles
 - Stainless steel kitchen and bathroom sink
 - USB charging ports (multiple locations throughout)
- CUSTOMER VALUE PACKAGE (MANDATORY)**
- 13,500 BTU roof-mounted A/C
 - 17 in. Griddle
 - 20 lb. LP gas bottles with auto-regulator and ABS cover
 - 55 gal. fresh water tank
 - Bathroom skylight
 - Black tank flush
 - Detachable power cord
 - Max-length power awning with LED light
 - MAXXAIR® power roof vent
 - On-demand 60,000 BTU water heater
 - Power tongue jack
 - Rock Solid stabilizer system
 - Side and rear back-up camera prep
 - Under mount spare tire

Base price	36,593.00
USA STANDARDS	n/c
CUSTOMER VALUE PACKAGE	6,000.00
JAY PRO PACKAGE	3,750.00
OVERLANDER I SOLAR PACKAGE	n/c
15,000 BTU AC	300.00
MICROWAVE	n/c
20# LP GAS BOTTLES	n/c
ACCESSORY ROOF RACK	293.00

UNIT TOTAL **46,936.00**

DEALER INSTALLED OPTIONS

UVW
4030 lbs

Sleeps

Length
19' 7.13"

DIMENSIONS

Exterior height:.....125.88"
 Exterior width:.....90.75"
WEIGHTS
 GVWR:.....4995
 GAWR (front):.....4870
 GAWR (rear):.....0
 Approx. Gross Cargo Carrying Capacity(GCCC):.....965

CAPACITIES

Fresh water tank (gals.):...55.00
 Gray water tank (gals.):...30.00
 Black water/toilet tank (gals.):...30.00
 Propane (lbs.):.....40
 Propane (gals.):.....9
 Water heater (gals.):.....0.25

TIRES

Tire size (front):.....LT225/75R16E
 Tire size (mid):.....
 Tire size (rear):.....
 Tire size (spare):.....LT225/75R16E

SEATING & SLEEPING

Some dimensions may be rounded and may vary from the actual dimensions
 Weights may be estimated calculations and may vary from the actual weight - refer to the vehicle weight labels for actual weights
 Floorplans, features and specifications are subject to change without notice.



25-22442N