



**Precept**



Serial #: 1UJMABR0S1UL4061  
 Model: 31UL PRECEPT MHA  
 VIN#: 1F66F5DN9R0A00543  
 Model Year: 2025 Dealer Name: CAMPERLAND OF OKLAHOMA LLC  
 8347 EAST 11TH STREET  
 TULSA, OK 74112  
 USA

**Manufacturer's Suggested Retail Price \$218,379.00**

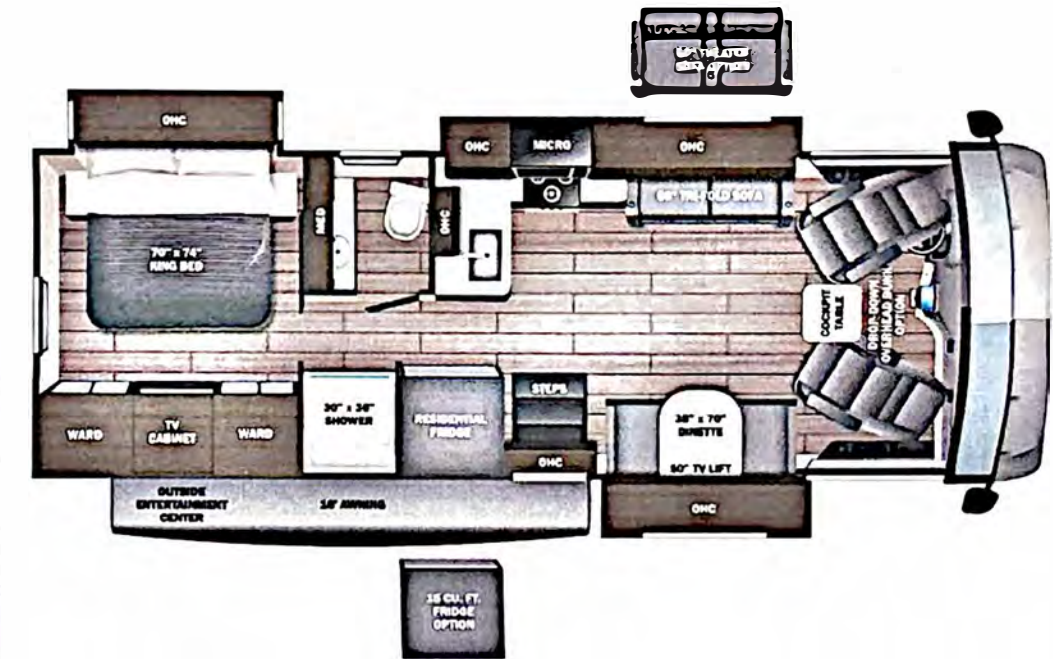
TOTAL AMOUNT DOES NOT INCLUDE STATE AND LOCAL TAXES OR LICENSE FEES. THE PRICE SHOWN ABOVE MAY OR MAY NOT BE REPRESENTATIVE OF THE ACTUAL SELLING PRICE OF SIMILAR RECREATIONAL VEHICLES IN YOUR AREA.

**Standard Equipment**

**Optional Equipment**

THE FOLLOWING ITEMS ARE STANDARD ON THIS MODEL AT NO EXTRA CHARGE

OPTIONAL EQUIPMENT INSTALLED ON THIS VEHICLE BY MANUFACTURER



- STANDARD EXTERIOR EQUIPMENT**
- Ford® F53 chassis
  - GVWR- 22,000 lb. (31UL, 34B, 34G) 24,000 lb. (36A, 36C)
  - GCWR- 26,000 lb. (31UL, 34B, 34G), 30,000 lb. (36A, 36C)
  - 7.3L V-8 335 HP engine with 468 ft.-lb. torque
  - 6-speed automatic TorqShift® transmission with overdrive and tow haul mode
  - 210-amp alternator
  - Catalytic converter theft deterrent
  - G-rated highway tires- 235/80R22.5 (31UL, 34B, 34G), 255/80R22.5 (36A, 36C)
  - Front and rear disc, 4-wheel anti-lock brakes
  - 5,000 lb. rear hitch receiver with dual connector and 7-pin plug
  - 12V chassis battery
  - 80 gal. fuel tank
  - 120 in. panoramic windshield
  - StrongholdVBL™ roof, floor and sidewalls
  - Bead-foam insulation (R-24 max roof, R-9 max floor, R-8 max walls)
  - One-piece, seamless fiberglass front cap with partial paint
  - One-piece, seamless fiberglass rear cap
  - One-piece, seamless, crowned fiberglass roof
  - Fiberglass exterior walls with vinyl graphics
  - Entrance door with industry's largest travel-view window
  - Electric-powered entrance steps
  - Lockable, pass-through storage compartments with metal slam latches
  - LED headlights
  - Third brake light
  - Roof ladder
  - Prep for satellite dish
  - Cable TV hookup with RG-6 coax and video selector switch
  - Winegard 2.0 Wi-Fi/4G antenna
  - 200W solar panel with dual controller
  - (2) 6V AGM (220Ah) house batteries on slideout tray
  - Transfer switch with reverse polarity protection
  - Detachable power cord
  - 16.5 gal. propane tank (56 lb.)
  - LP quick-connect hookup
  - Heated holding tanks (12V pads)
  - Exterior utility center
  - Winterization drain system
  - Black tank flush
  - Outside shower
  - 12V demand water pump
  - Water filtration system

- STANDARD INTERIOR EQUIPMENT**
- 6-way power and swivel driver/passenger seats
  - Soft-touch, vinyl-wrapped automotive dash
  - Tilt steering wheel
  - Cruise control
  - Hill start assist
  - Electronic stability control
  - Traction control
  - Auxiliary start
  - Power front privacy shade with manual side privacy shades
  - Firefly total coach control system with wall-mounted touchscreen and mobile app
  - 84 in. interior ceiling height with padded vinyl ceiling
  - High-intensity recessed LED ceiling lights
  - LED-lit fascia
  - Hardwood cabinet doors and drawer fronts
  - Ball-bearing drawer guides
  - Jayco-exclusive, easy-operation legless dinette table
  - 2-point lap safety belts in all designated seating locations
  - Car seat leathers (select floorplans)
  - JBL® audio system
  - 30,000 BTU auto-ignition ducted furnace (31UL, 34B, 34G, 36C)
  - (2) 30,000 BTU auto-ignition ducted furnaces (36A)
  - Electric fireplace (34B, 34G, 36C)
  - Residential refrigerator
  - Furon® all-in-one cooktop and oven
  - Residential-size microwave
  - Decorative kitchen backsplash
  - Shower with decorative surround, glass door, skylight and light
  - Stainless steel bathroom sink
  - Porcelain toilet with foot flush
  - Powered roof vent in bathroom with wall switch
  - Walk-around, king-size bed with bedspread and nightstands
  - USB port and wireless charging in nightstands
  - LED HD Smart TV in bedroom
  - Under-bed storage (select models)
  - Large wardrobes
  - Bunks with industry-exclusive 300 lb. capacity each (36A)
  - Wall-mounted tablet holder in each bunk (36A)
  - Smoke alarm
  - Carbon monoxide detector
  - Fire extinguisher

- Base price 201,818.00
- BENTON n/c
- ALLOY BLOCK GRAPHICS PACKAGE n/c
- USA STANDARDS n/c
- CUSTOMER VALUE PACKAGE 11,250.00
- RESIDENTIAL REFRIGERATOR n/c
- FIBERGLASS REAR CAP n/c
- POWER THEATER SEATING 2,018.00
- SOFA 2,293.00
- FRONT OVERHEAD BUNK

UNIT TOTAL 218,379.00

DEALER INSTALLED OPTIONS

**DIMENSIONS**

Exterior height:.....154.00"  
 Exterior width:.....101.00"

**CAPACITIES**

Fresh water tank (gals.):...72.00  
 Gray water tank (gals.):...40.00  
 Black water/toilet tank (gals.):.....50.00  
 Propane (lbs.):.....56  
 Propane (gals.):.....13  
 Water heater (gals.):.....10.00

**TIRES**

Tire size (front):.....235/80R22.5G  
 Tire size (mid):.....  
 Tire size (rear):.....235/80R22.5G

\*\*\*Some dimensions may be rounded and may vary from the actual dimensions\*\*\*  
 \*\*\*Weights may be estimated calculations and may vary from the actual weight\*\*\*  
 - refer to the vehicle weight labels for actual weights\*\*\*  
 Floorplans, features and specifications are subject to change without notice.



25-22401N