



# Eagle HT



Serial #: 1UJCA0BR6S1BE0085  
 Model: 29RLC EAGLE HT FW

Model Year: 2025 Dealer Name: CAMPERLAND OF OKLAHOMA LLC  
 8347 EAST 11TH STREET  
 TULSA, OK 74112  
 USA

## Standard Equipment

## Optional Equipment

THE FOLLOWING ITEMS ARE STANDARD ON THIS MODEL AT NO EXTRA CHARGE

OPTIONAL EQUIPMENT INSTALLED ON THIS VEHICLE BY MANUFACTURER

### STANDARD EXTERIOR EQUIPMENT

- 1.5 in. fresh water drain valve
- 5 in. Magnum Truss™ with plywood roof decking
- 50-amp detachable power cord
- Additional dump valve at termination
- Alpha Ply TPO roof membrane (thickest roof membrane with limited lifetime warranty)
- Auto-grade vinyl graphics
- Automotive style front cap with max turn radius (painted on select models)
- Backup camera prep
- Black tank flush
- Climate Shield™ zero-degree tested weather protection
- Fully enclosed and heated underbelly (ducted)
- 35,000 BTU furnace
- Double layer fiberglass batt insulation in ceiling and floor
- Double sided radiant barrier insulation (roof, floor and behind cap)
- PEX plumbing
- Commercial grade rubber flooring in pass through area

- Dual 30 lb. LP bottles
- Factory installed roof ladder
- Galvanized steel coated outside kitchens
- HELIX Cooling System™ (industry exclusive)
- Jayco exclusive insulated dual duct design
- Directional and closeable A/C vents
- Larger return air vents with user accessible filters
- Independent satellite and cable hookups (outside kitchens and/or pass through storage areas)
- LED exterior lighting package
- LED light and switch at termination
- LED lighting in pass through area
- LP quick connect for gas griddle (next to JayPort)
- Metal slam latch baggage doors
- Nautilus 2.5 water connections
- Nitrogen filled under mount spare tire (model/option varies 15 in. or 16 in.)
- Overlander Solar Prep (Roof)
- Quick connect water connections (door side hot/cold and off door side cold only)
- Slide topper/awning prep
- Stronghold VBL™ walls (laminated sidewalls, rear walls and slide out walls)

### LUXURY PACKAGE (MANDATORY)

- Blackout roller shades with reflective side throughout
- Electric auto-leveling
- GE 10 cu. ft. 12V refrigerator
- GE 30 in. over-the-range black and stainless microwave with exhaust fan
- GE black and stainless 21 in. range with edge to edge grates
- Inverter pre-wire (multiple locations) ((7) 110 outlets) (6 USBs 12V)
- JayPort 2 in. mount (for outside accessories)
- Magnetic catches for all drawers and doors
- Multi-Function "ALL in ONE" Stainless steel kitchen sink
- Residential 66 in. x 80 in. Olympic size mattress
- Residential style glass shower door
- Washer/dryer prep (select models)

### STANDARD INTERIOR EQUIPMENT

- 100% No Floor Vents
- 2-piece high gloss bathroom surround
- 5/8 in. tongue and groove plywood flooring
- 75 lb. full extension drawer guides
- Bathroom skylight
- Bedroom TV, satellite and cable prep
- CPAP prepped bedroom (both sides)
- Extra 120V power outlets in kitchen and slide rooms (where applicable)
- Gas strutted under bed storage
- Handcrafted and glazed door/drawer fronts
- Matte black kitchen faucet with pull-out sprayer
- NuVo H2O Water Treatment System (filters included)
- Porcelain foot flush toilet
- Residential vinyl flooring throughout (NO CARPET)
- Solid hardwood slide fascia
- Teak seat shower prep (select models)
- Theater seating (select models)
- Tri-fold hide-a-bed sofa with residential memory foam sleep surface (select models)
- USB 12V charging ports (multiple locations throughout)
- Water shutoff at all faucet locations

### CUSTOMER VALUE PACKAGE (MANDATORY)

- 15,000 BTU "Whisper Quiet" A/C and bedroom A/C prep
- 40 in. 4K Ultra LED HD Smart TV in living room
- 50-amp service with dual A/C ducts
- 60,000 BTU on-demand tankless water heater
- Custom machined aluminum rims
- Electric patio awning
- Exterior "Blue Sync" Audio Connect with MB Quart Sound (TV and phone)
- Hidden hinges on cabinet doors
- Interior "Blue Sync" Audio Connect with MB Quart Sound (TV and phone)
- Keyed-Alike™ lock system
- MORryde Step Above™ entrance steps (main entrance) with blue LED light
- Rain proof bathroom power vent
- Rear 2 in. towing receiver with 4-pin connector
- Upgraded friction hinge entrance door
- Winegard Air 360 + antenna and router prep (NOW 5G)

### 4 STAR HANDLING PACKAGE (MANDATORY)

- Dexter® Axles with NEV-R-Adjust® brakes and E-Z Lubo® hubs
- Goodyear® Endurance® tires (load range E)
- MORryde® CRE-3000™ rubberized suspension
- Wet bolt fasteners with bronze bushings

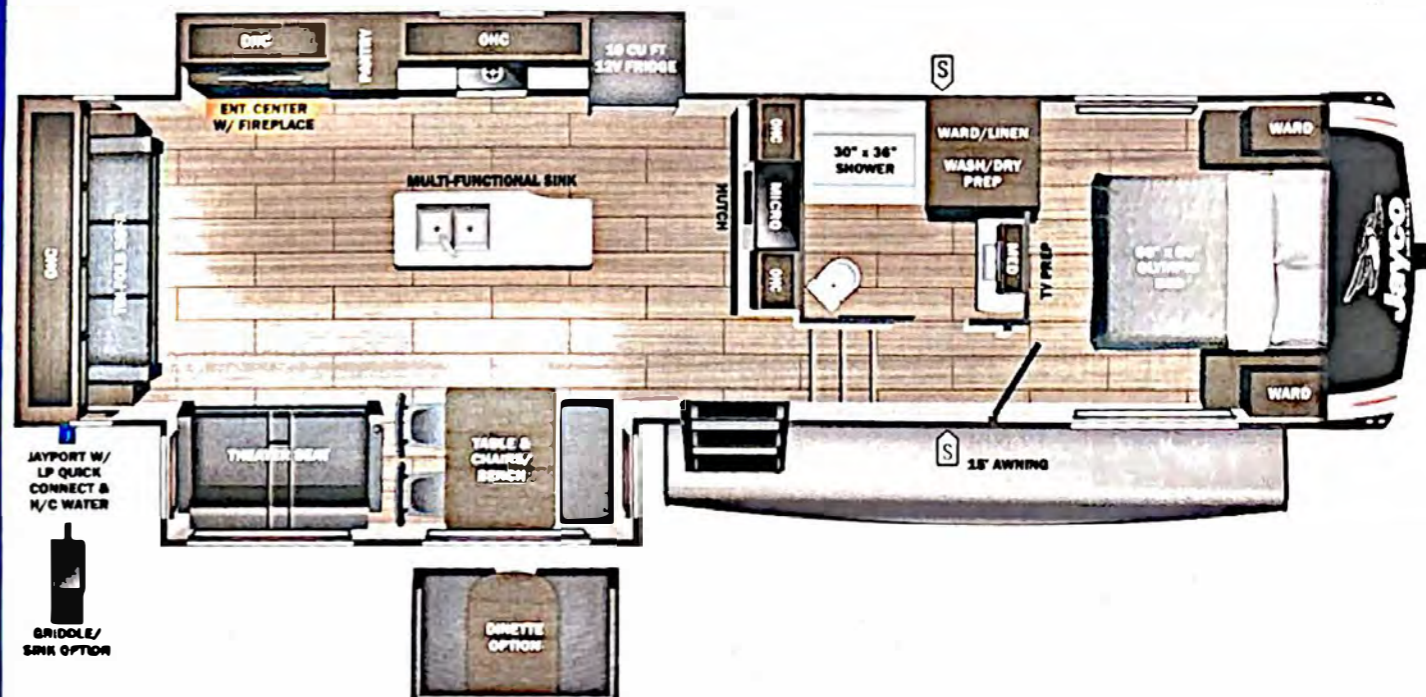
Base price	57,750.00
USA STANDARDS	n/c
CUSTOMER VALUE PACKAGE	6,263.00
LUXURY PACKAGE	7,493.00
FOUR STAR HANDLING PACKAGE	3,743.00
OVERLANDER I SOLAR PACKAGE	443.00
STANDARD CAMPING PACKAGE	n/c
NO JAYCOMMAND TABLET	n/c
2ND 15,000 AC IN BEDROOM	1,043.00
STANDARD BRAKE	n/c
FREE STANDING TABLE,FOLDING CHAIRS(2),BENCH SEAT FURNITURE CUP HOLDER	n/c
TABLES-1 PAIR	113.00

UNIT TOTAL 76,848.00

DEALER INSTALLED OPTIONS

Manufacturer's Suggested Retail Price \$76,848.00

TOTAL AMOUNT DOES NOT INCLUDE STATE AND LOCAL TAXES OR LICENSE FEES. THE PRICE SHOWN ABOVE MAY OR MAY NOT BE REPRESENTATIVE OF THE ACTUAL SELLING PRICE OF SIMILAR RECREATIONAL VEHICLES IN YOUR AREA.



**UVW** 9458 lbs **Sleeps** **Length** 33' 11.5"

### DIMENSIONS

- Exterior height:.....155.50"
- Exterior width:.....96.75"
- GVWR:.....10750
- GAWR (front):.....5145
- GAWR (rear):.....5145
- Approx. Gross Cargo Carrying Capacity (GCC):.....1292

### CAPACITIES

- Fresh water tank (gals.):...52.00
- Gray water tank (gals.):...82.00
- Black water/toilet tank (gals.):.....45.00
- Propane (lbs.):.....60
- Propane (gals.):.....14
- Water heater (gals.):.....0.25

### TIRES

- Tire size (front):.....ST225/75R15E
- Tire size (mid):.....
- Tire size (rear):.....ST225/75R15E
- Tire size (spare):.....ST225/75R15E

\*\*\*Some dimensions may be rounded and may vary from the actual dimensions\*\*\*  
 \*\*\*Weights may be estimated calculations and may vary from the actual weight - refer to the vehicle weight labels for actual weights\*\*\*  
 Floorplans, features and specifications are subject to change without notice.



25-22394N