

LUXURY FIFTH WHEEL



**Jayco**

Generations of family fun.

PINNACLE



PINNACLE



**2+3**  
YEAR YEAR  
LIMITED STRUCTURAL  
WARRANTY



PINNACLE 32RLTS



32RLTS shown in Cashmere Cottage interior design



32RLTS bathroom



Walk-in shower  
N/A-36FBTS, 32RLTS, 38FLWS

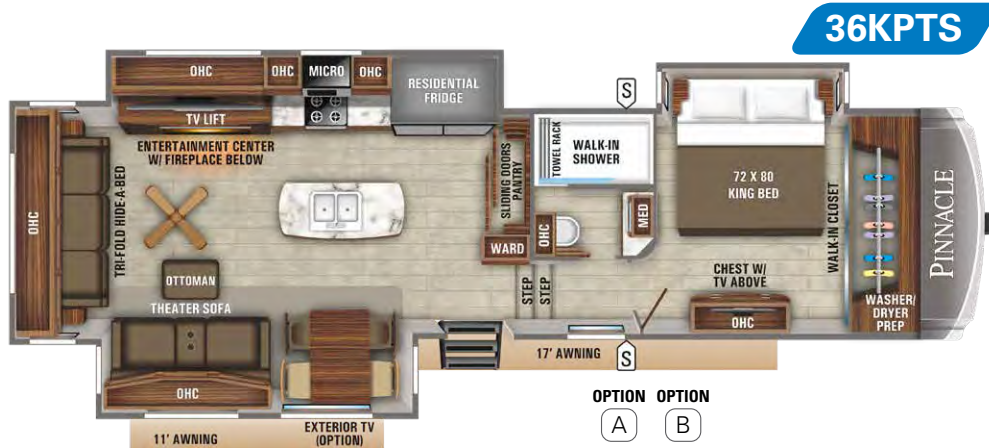




36KPTS shown in Kingston interior design







**SPECS**

FLOORPLAN	EXTERIOR LENGTH	EXTERIOR WIDTH	EXTERIOR HEIGHT (WITH A/C)	INTERIOR HEIGHT	INTERIOR HEIGHT BEDROOM	UNLOADED VEHICLE WEIGHT	DRY HITCH WEIGHT	GVWR	CARGO CARRYING CAPACITY	FRESH WATER CAPACITY (INCLUDING WATER HEATER)	GREY WASTE WATER CAPACITY	BLACK WASTE WATER CAPACITY	SLEEPING CAPACITY
<b>32RLTS</b>	36' 6"	8' 6"	13' 6"	8' 5"	6' 7"	12,725	2,445	15,500	2,775	85	87**	50	4 - 5
<b>36FBTS</b>	40' 11"	8' 6"	13' 6"	8' 6"	6' 7"	13,670	2,905	16,500	2,830	85	87**	87**	3 - 4
<b>36KPTS</b>	41' 2"	8' 6"	13' 6"	8' 6"	6' 7"	13,610	2,900	16,500	2,890	85	87**	50	3 - 4
<b>36SSWS</b>	40' 1"	8' 6"	13' 6"	8' 6"	6' 6"	13,910	3,287	16,750	2,840	85	87**	50	4 - 5
<b>37MDQS</b>	41' 9"	8' 6"	13' 6"	8' 5"	6' 8"	14,250	3,355	16,995	2,745	85	87**	50	6 - 8
<b>38FLWS</b>	41' 9"	8' 6"	13' 6"	8' 5"	6' 7"	14,275	4,225	16,995	2,720	85	107**	37	5 - 7

Some specs at the time of print may include estimates. For the most accurate information, please visit [Jayco.com](http://Jayco.com).

**\*\*Split Tanks**

**Unloaded Vehicle Weight (UVW):** Sometimes referred to as "Dry Weight," UVW means the typical weight of the trailer as built at the factory. The UVW, as used in product literature and other promotional materials, does not include cargo, fresh water, propane, options or dealer-installed accessories.

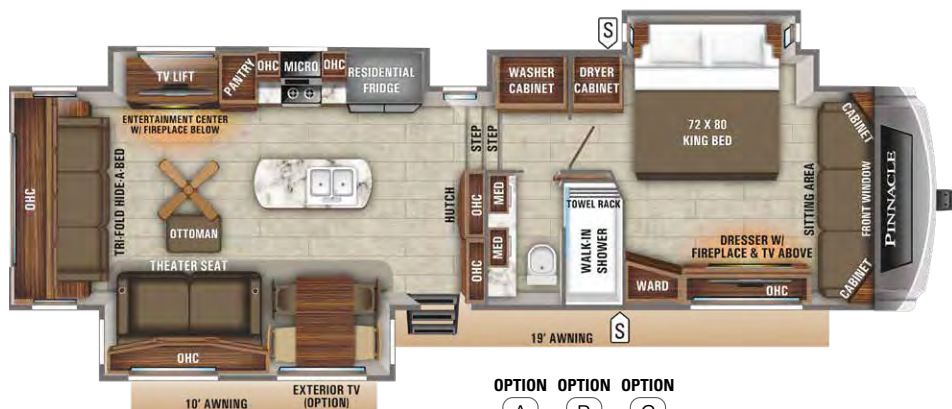
**Gross Vehicle Weight Rating (GVWR):** GVWR means the maximum permissible weight of the trailer, including the UVW plus personal items, all cargo, fluids, options and dealer-installed accessories. The GVWR is equal to or greater than the sum of the UVW and the CCC.

**Cargo Carrying Capacity (CCC):** CCC means the maximum weight of personal items, food, fresh water, propane, tools, other cargo and dealer-installed accessories that can be carried by the trailer. CCC is equal to or less than GVWR minus UVW. The addition of options will decrease the CCC.

**Hitch Weight (HW):** The hitch weight, as used in product literature and other promotional materials, does not include cargo, fresh water, propane gas, options or dealer-installed accessories. The addition of these types of items will either add to or subtract from the stated hitch weight.

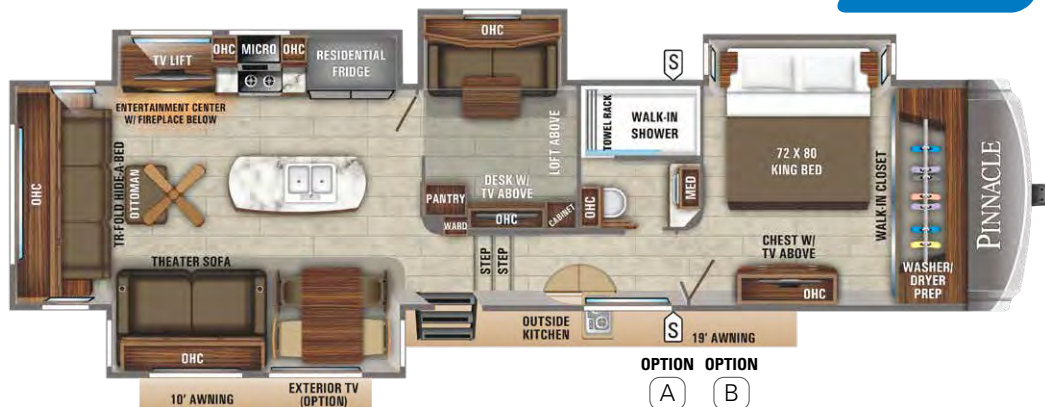
It is important for your safety and enjoyment that your tow vehicle be adequately sized and equipped to tow and handle the GVWR of the RV you select. Review weights and rating of your tow vehicle and consult a competent advisor for questions or advice. Whether you are new to RVing or a veteran, get a feel for the performance of your tow vehicle before heading out on the roadways. When you tow an RV, you must drive differently than when you drive a single vehicle. Practice hooking up, driving, backing up and braking in a safe environment or seek out professional instruction. Jayco affixes a weight label to each RV which lists estimated weight information for that vehicle. See specifications chart above.

36SSWS



OPTION OPTION OPTION  
 (A) (B) (C)

37MDQS



OPTION OPTION  
 (A) (B)

38FLWS

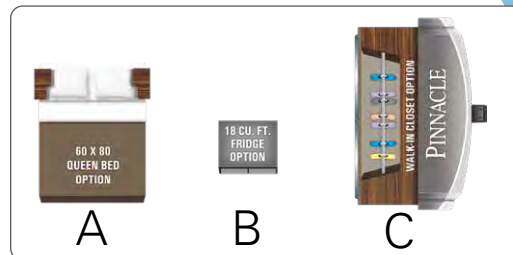


OPTION OPTION  
 (A) (B)

LEGEND

	STORAGE
	MICRO MICROWAVE
	OHC OVERHEAD CABINETS
	FRIDGE REFRIGERATOR
	WARD WARDROBE

OPTIONS



STANDARD GRAPHICS

EXTERIOR GRAPHICS



CARBON STEEL

EXTERIOR FULL BODY PAINT OPTIONS



DESERT SUN





# Two **Unique & Beautiful** Concepts

**True interior design. More choice. Mindful craftsmanship.**

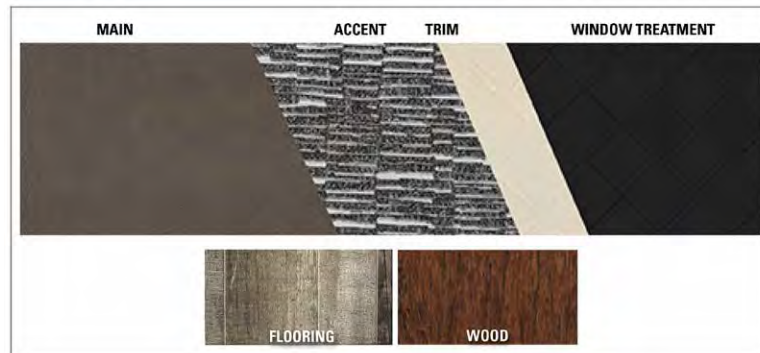
Every fixture, fabric and feature has been carefully selected and expertly installed. The result is an aesthetic that's extraordinary—with Jayco's famous high level of live-ability.

Led by Interior Designer Stacy Stewart, our design, product development and engineering teams set out to answer the call for more choice in RV interiors and developed a market-disrupting design concept that could be expertly crafted without hampering production.

## CASHMERE COTTAGE



## KINGSTON



# JAYCOMMAND

THE JAYCOMMAND™ SYSTEM PUTS RVERS IN FULL CONTROL OF THEIR UNIT.  
THE SYSTEM WAS CUSTOM-BUILT BY OUR PRODUCT DEVELOPMENT TEAMS  
ALONG WITH BPRO®, SO THAT OWNERS CAN MONITOR AND CONTROL KEY RV  
OPERATIONS FROM A PHONE OR A TABLET.

## PINNACLE STANDARDS & OPTIONS

### STANDARD EXTERIOR EQUIPMENT

Stronghold VBL™ aluminum framed and vacuum bond laminated gel-coated fiberglass exterior walls (including slide room end walls)  
Magnum Truss™ XL6™ Roof System (strongest tested roof in the industry) with one piece, seamless DiFlex II material  
Climate Shield™ zero-degree tested weather protection: Fully enclosed and heated underbelly (ducted), 40,000 BTU output furnace, double layer fiberglass batt insulation (roof, floor, cap, and slide room floors), PEX plumbing  
HELIX Cooling System™ (industry exclusive): Dual exterior-mounted 15,000 BTU “Whisper Quiet” A/C units, Jayco exclusive insulated dual duct design, directional and closeable A/C vents, larger return air vents with user accessible filters  
JaySMART™ (Safety Markers And Reverse Travel)  
LED lighting (patent-pending)  
Painted fiberglass front and rear cap with built-in specialty LED lighting  
Frameless dark tinted safety glass windows  
Custom automotive-grade vinyl exterior graphics package  
Skirt metal enclosed drop frame  
LED exterior lighting package  
Dual 30 lb. propane bottles with auto regulator  
Doorside compartment framed and vented for third propane bottle  
Pass-through storage with Slam-latch™ baggage doors  
Digital TV antenna with Wi-Fi  
Exterior marine-grade speakers  
Fully enclosed, LED-lit Nautilus universal docking center: Selectable water connections, quick-connect outside shower, black tank flush, winterization, and sanitation, independent satellite and whole coach cable hookups  
Water heater bypass  
Battery disconnect  
Under-mounted spare tire  
(Goodyear® Endurance® tires- Made in USA)  
LP quick connect (outside grill prep)  
Roof ladder  
Equalizer hydraulic 6-point auto-leveling system with oversized foot pad

### STANDARD INTERIOR EQUIPMENT

Solid hardwood slide fascia  
Handcrafted and glazed doors, drawers and trim  
Soft close, heavy-duty, 75 lb. full extension, steel ball-bearing drawer glides  
5/8 in. tongue and groove joined plywood floor decking  
Shaw® residential carpeting with R2X® stain guard (Made in USA) in slideout only  
Shaw® vinyl flooring (Made in USA) throughout  
Ceiling fan (select models)  
LED interior lighting throughout  
Crown molding with LED lighting in main living/kitchen areas  
Toe kick night lights in bedroom, bathroom and kitchen  
Tri-fold hide-a-bed sofa with residential sleep surface and ottoman (select models)  
Stainless steel kitchen sink

Residential-grade, pullout kitchen faucet  
21 cu. ft. residential refrigerator and 1,200W pure sine wave inverter  
Under-mounted stainless steel bathroom sink  
Dual USB charging ports (kitchen and bedroom)  
12V charging station  
Extra 110V power outlets in kitchen and slide rooms  
Bathroom skylight  
Medicine cabinet with mirror and LED lighting above  
Bathroom multi-metal tile backsplash  
Porcelain foot flush toilet  
Residential quilted bedspread and pillows  
Gas-strutted under-bed storage  
CPAP prepped bedroom  
Carbon monoxide and LP detector

### CUSTOMER VALUE PACKAGE (MANDATORY)

MORryde® StepAbove™ entrance steps (main entrance) with blue LED light  
15,000 BTU “Whisper Quiet” A/C (living room)  
Electric patio awning with integrated LED lights  
Quick recovery gas/electric DSI water heater (20 gal. per hour)  
Residential king (72 in. x 80 in.) Serta® mattress with under-bed storage  
Custom machined aluminum rims  
LED HDTV with fully digital HDMI output  
Dual mode 12V AM/FM/CD/DVD/USB/ A/V system with Bluetooth® and HDMI®  
Integrated sound bar  
Keyed Alike™ lock system (single key for all doors/locks)  
Rooftop and ground solar prep by GoPower®  
Backup camera prep (rear observation)  
Hidden hinges  
XL grab handle

### 5 STAR HANDLING PACKAGE (MANDATORY)

Goodyear® Endurance® tires (Made in USA, Load Range ‘E’)  
MORryde® pin box  
Dexter® axles with Nev-R-Adjust® brakes and E-Z Lube® hubs  
MORryde® LRE-4000™ rubberized suspension  
Wet bolt fasteners and bronze bushings

### LUXURY PACKAGE (MANDATORY)

JAYCOMMAND™ “Smart RV” system powered by BMAPRO®  
Drinking Water System™ (patent-pending)  
2nd electric patio awning with integrated LED lights)  
Hardwood Cherry and Maple cabinet stiles (varies by décor)  
Central vacuum system  
MCD® day/night roller shades in living room  
21 cu. ft. residential refrigerator and 1200W pure sine wave inverter  
Freestanding (no pedestal) table with leaf and 2 storage and 2 folding chairs  
2nd 15,000 BTU “Whisper Quiet” A/C in bedroom  
Washer/dryer prep  
Dishwasher prep  
Convection microwave

Insignia 24 in. range with 12,000 BTU burner and 3.73 cu. ft. oven  
Solid-surface kitchen counterop with solid surface sink covers  
LED fireplace with 5,000 BTU electric space heater  
Whole coach water purification system  
Powered 50 amp cord reel  
Roof mount satellite prep  
Cellular Prep for Antennae and JAYCOMMAND™ “Smart RV” System  
Tire Pressure Monitoring System  
Lamilux high gloss gel-coated sidewalls  
Oversized multi-battery compartment (Industry leading)

### OPTIONS

Canadian Standards (CSA)  
Custom contemporary or traditional interior design (Industry first!)  
Customer Value Package: 15,000 BTU central air with heat pump  
Full body paint- Desert Sand/ Carbon Steel  
Serta® queen residential foam-top mattress  
Electric Euro lift bunk bed  
18 cu. ft. Norcold Polar Max 2-way gas/electric refrigerator with ice maker  
Overlander Solar Kit (solar controller and roof-mounted 190W panel)  
Wireless backup/rear view camera kit  
32 in. exterior built-in TV  
3rd 15,000 BTU A/C (select models)  
Sani-con® Turbo waste management system  
Generator prep with 120 lb. Max LP system  
5,500 W Onan® Microquiet LP generator  
Frameless dual pane tinted safety glass windows  
Slideout awnings (quantity varies by model)  
2 in. accessory receiver hitch  
Exterior grill



**50 percent Stronger**

**4,500 lbs. on a Jayco Roof vs. other roofs**



**Jayco's Roof vs. Other Roofs**



## 5-STAR HANDLING PACKAGE

The 5 Star Handling Package is a Jayco exclusive, a powerful blend of high-end American-made components that make pulling a luxury fifth wheel a breeze.

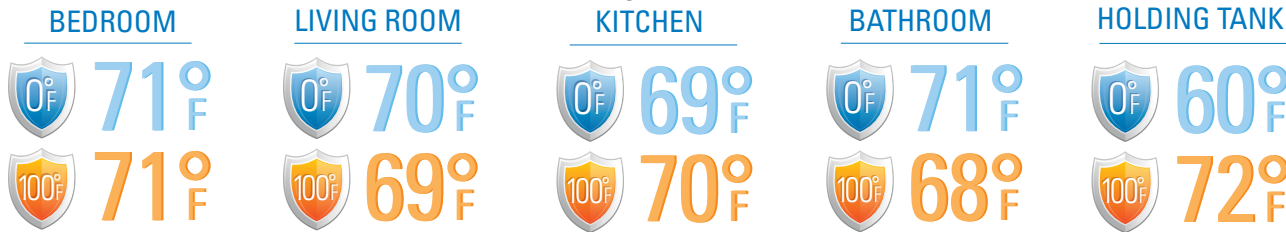
				
<b>DEXTER AXLES WITH NEV-R-ADJUST BRAKES</b> The Benchmark of the trailer industry!	<b>MORRYDE PIN BOX</b> Allows pin box to travel forward and backward as well as side-to-side, creating a smoother tow.	<b>DEXTER HEAVY-DUTY SHACKLES WITH WET BOLT FASTENERS AND BRONZE BUSHINGS</b> Resists the wear-and-tear of towing.	<b>MORRYDE RUBBERIZED SUSPENSION SYSTEM</b> Better absorbs and isolates road shock.	<b>GOODYEAR BEAST TIRES</b> Made in the U.S.A. and featuring the patented Durawall® technology.



# CLIMATE SHIELD

Extend your camping season with the Jayco Climate Shield.

It protects against extreme heat and extreme freezing—even in temperatures as high as 100 degrees or as low as zero degrees (Fahrenheit).\*



\*Jayco tested fifth wheels in zero degrees F and 100 degrees F weather over an extended period of time in a controlled environment, and all functions of the coach were fully operational. Testing was done in a completely controlled environment; therefore, temperatures during testing may not represent actual temperatures in nature and cannot account for elements such as wind or moisture. In actual use, unit may not perform as well. Supplier of cooling components does not guarantee anything better than 20 degrees difference from ambient temperature. In addition, outside components are subject to freezing and require steps to properly insulate. Jayco's limited warranty does not cover damage caused by freezing. To learn more about Climate Shield and testing done by Jayco, visit [www.jayco.com](http://www.jayco.com).

# 2+3

YEAR LIMITED | YEAR STRUCTURAL  
WARRANTY

## Travel with Confidence

**NO ONE OFFERS A BETTER WARRANTY**

At Jayco, we build our RVs to handle every adventure, then back them with our **industry-leading 2+3 warranty**. Our 2-year limited warranty has you covered for 2 camping seasons. That's **730 days**. In addition, our 3-year structural warranty has you covered for **3 camping seasons or 1,095 days**. You won't find a better warranty in the business, because the only strings we attach are those that deliver the ultimate in reliability. That's the Jayco difference. So go explore. For a copy of our 2-year limited + 3-year structural warranty with complete terms and conditions, please contact your local Jayco dealer.

Meet your Jayco Dealer \_\_\_\_\_



Jayco, Inc. | P.O. Box 460 | Middlebury, IN 46540 © **RVIA**  
See dealer for further information and prices. All information in this brochure and on [www.jayco.com](http://www.jayco.com) is the latest available at the time of publication approval. Jayco reserves the right to make changes and to discontinue models without notice or obligation. Photography may show optional equipment or props used for decoration purposes only. RVs built for sale in Canada may differ to conform to Canadian codes. JAYCO and the JAYCO BIRD IN FLIGHT are registered trademarks of Jayco, Inc. Printed in USA ?K ?/19 ©2019 Jayco, Inc.

Follow Jayco  
#LetsJayco

