

# JAYCO

1 9 9 5

## FOLD-DOWNS



WELCOME HOME

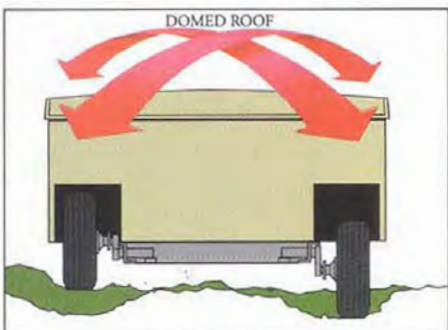


Eagle 12 KB with Optional Bike Rack — Towed by Jayco Van Conversion (Chevy Astro)

## EAGLE SERIES™ FOLD-DOWNS STRETCH YOUR DOLLARS — AND YOUR CAMPING FUN!

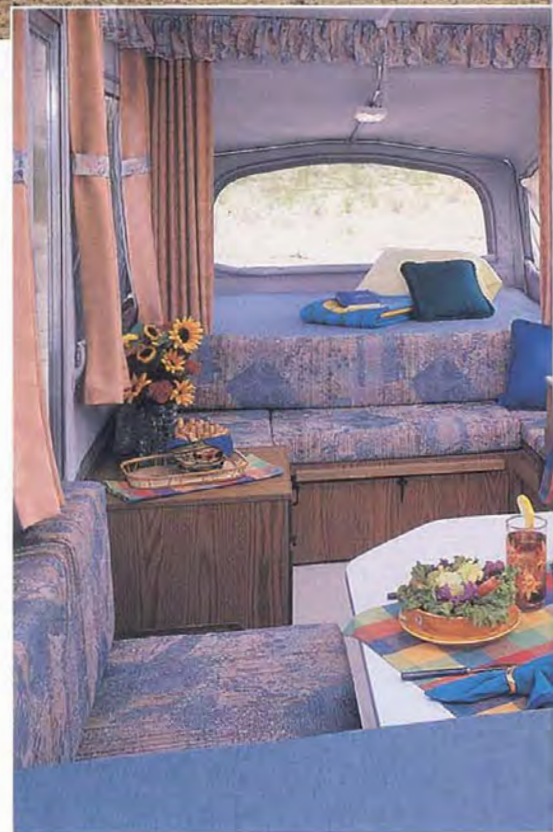
What a *pleasure!* — a camping trailer that's not only one of the most economical around, but comes loaded with great standards, too:

- Jayco's famous, patented\*, superbly engineered roof-lifter system: lets you set up or strike camp quickly and easily — so you can spend more time enjoying the life you love; comes with our own lifetime limited warranty\*\*
- A big, roomy, family-sized dinette
- Reversible, vinyl-backed dinette cushions — make clean-up a cinch
- A carry-out stove that lets you cook where it's most convenient — indoors or out
- A dinette table that can also be used indoors or out
- A galley that stows away above the dinette, not in the aisle — lets you use the aisle space for extra storage when you're underway
- A large, built-in ice box (see photo on page 4)
- Positive-lock catches on all doors



Independent Torsion-axle Suspension keeps travel smooth, even over rough, bumpy roads

- and drawers — to keep them securely shut while you're traveling
- A cut-off light switch — automatically turns all interior lights off when the roof is closed down
- An entrance door that can be opened even when the roof is down
- Tinted privacy windows — also help keep interior temperatures down; save fabrics from UV damage
- Window drapes for privacy and climate control
- Attractive valances running all around the interior
- 4"-thick bunk mattresses — for total comfort
- Strong, weather-sealed plywood for the floor and end bunks
- An incredibly strong and durable laminated outer skin of aluminum
- A one-piece tent: no sections means no zippers, no hassles, no access for insects
- A patio light
- An outside 110-volt receptacle
- A 25-foot power cord
- Self-storing stabilizer jacks
- A welded safety bumper
- Eleven clearance lights — including lights on the sides — for added safety
- C-range tires — heavier-duty for greater load capacity
- Jayco's careful construction — blending Old World craftsmanship with modern manufacturing techniques; the same construction features found in our Jay Series fold-downs



### FLOOR PLANS

KB or K = King Bed    ST = Front Storage Trunk  
 SD = Side Dinette    UD = U-shaped Dinette  
 ▲ = Outside Storage Compartment



Eagle 8

Eagle 8 SD

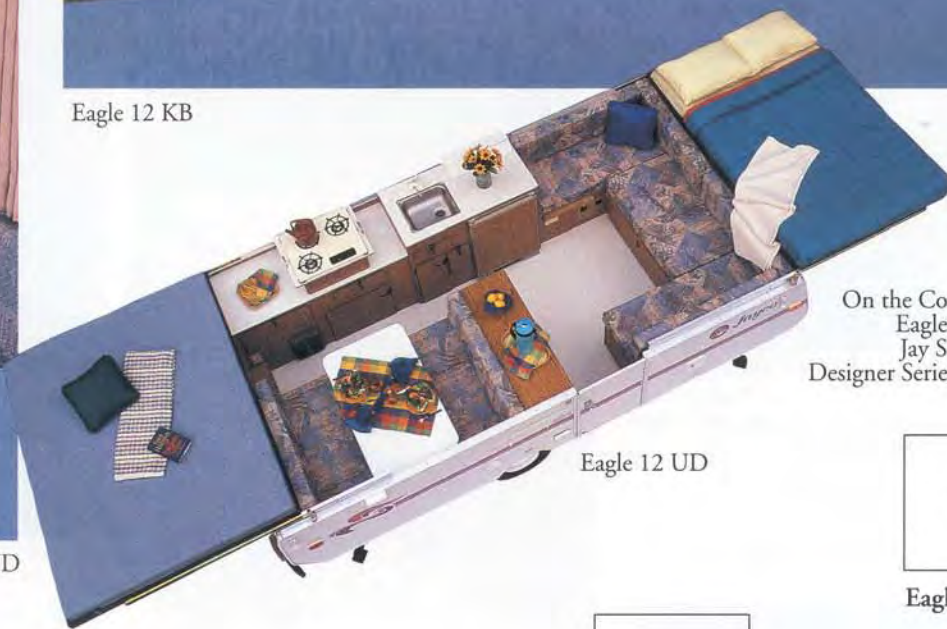
\* U.S. Patent No. 3,495,866

\*\* See Back Cover



Eagle 12 KB

Eagle 10 UD

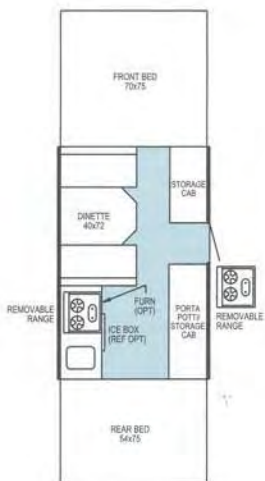


Eagle 12 UD

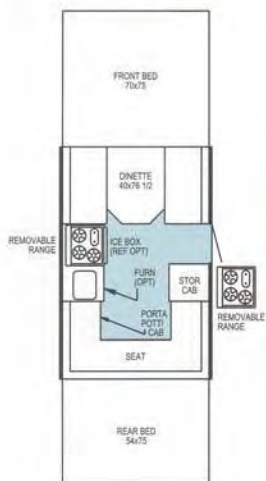
On the Cover, from Top:  
Eagle Series 12 KB,  
Jay Series 1006 ST,  
Designer Series Cardinal SD



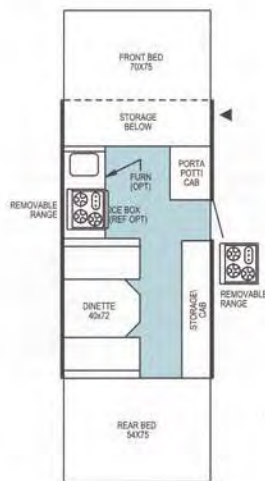
Eagle 12 UDK



Eagle 10



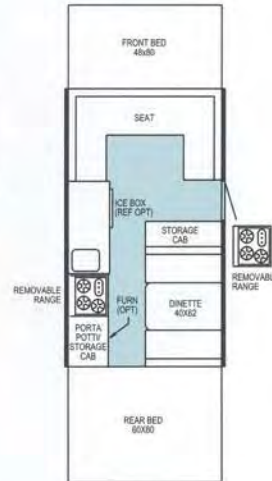
Eagle 10 UD



Eagle 10 ST



Eagle 12 KB



Eagle 12 UD



Jay Series 1207

## JAY SERIES™ FOLD-DOWNS ENLARGE YOUR WORLD ... AND YOUR CAMPING ENJOYMENT!

Here's the answer for those who want even *more* of a taste of home when they travel! Jay Series fold-downs give you all of what the Eagle Series does — *plus* these fantastic features:

- A 3-burner range
- Rich brass-colored cabinet hardware
- Framed oak cabinet doors
- A clothes-hanging bar that holds lots of clothes
- An optional wardrobe and overhead cabinet available for most models
- An optional shower in some models (see back cover)
- A king bed in five models
- Attractive bed skirts
- End-bunk privacy curtains

- A 14" x 14" roof vent inside — will accept an air conditioner
- Radiused sidewall skirting
- A lockable outside storage compartment
- An optional outside shower
- A standard spare-tire mount
- Hydraulic surge brakes — standard on 12' and 14' models
- Four stabilizing jacks



Large-capacity, Built-in Ice Box is fully insulated, self-draining; has side-opening door & convenient shelving

All Jayco fold-downs come with Jayco's own, patented\* roof-lifter system, which is fully enclosed above the floor for protection from stones, dirt, tar, and the elements:

1. No holes in floor for cable access, so bugs and rodents can't get in either
2. Smooth-operating crank lets you raise roof effortlessly
3. Automatic brake on winch helps prevent free-fall
4. Strong, flexible push rods push up lifter posts to raise roof.

**NEW! An Optional Power-driven Roof-lifter System (Patent Pending) for All Jayco Fold-downs:** Innovative electronic engineering ensures even smoother, easier operation and reliable performance under tough conditions!

\*U.S. Patent No. 3,495,866

### FLOOR PLANS

- KB = King Bed  
 ST = Front Storage Trunk  
 ▲ = Outside Storage Compartment



Jay 1006





Jay Series 1207



Jay Series 1006 ST



Huge, 20-cubic-foot Front Storage Compartment in all ST models



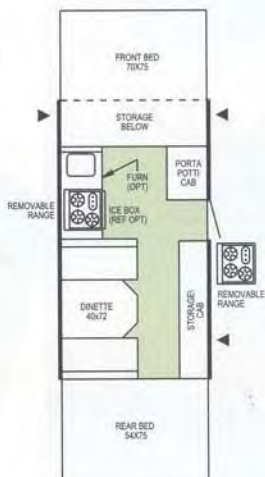
Front and Rear End Caps are made of good-looking, hard-wearing, dent-resistant ABS; Roof Lifter-system Crank is positioned at a comfortable height



Jay 1206 KB



Jay 1207 KB



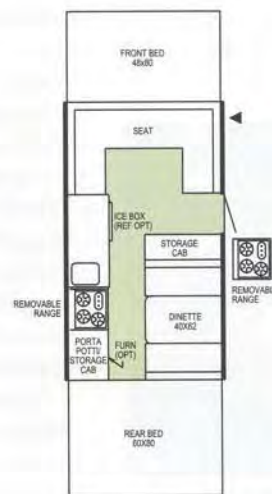
Jay 1006 ST



Jay 1007



Jay 1206



Jay 1207



Jay 1406



Designer Series Cardinal SD

## DESIGNER SERIES™ FOLD-DOWNS TAKE YOUR CAMPING EXPERIENCE TO NEW HEIGHTS!

With *this* fold-down, the notion of “a home away from home” takes on a whole new meaning. The Designer Series is a true “luxury” camper. It offers everything the Eagle Series and Jay Series do — then it adds these features ... to give you the ultimate camping experience:

- Rich-looking cabinetry with radius corners
- Raised panels of elegant, hard-wearing solid oak on cabinet doors and drawers
- Deluxe interior decor fabrics, carefully selected for durability as well as eye appeal
- A vanity for more convenient campsite grooming
- A wardrobe that lets clothes hang full-length
- A built-in spice rack
- A porcelain sink
- A towel bar
- Fashionable tie-backs for the draperies



ABS Front Cap has Storage Compartment above body-integrated Bottle Cover

- Additional Dacron® padding in the cushions
- An adjustable mirror on the entrance door
- A built-in entrance step
- A built-in magazine rack
- Sleek, smooth fiberglass exterior walls, vacuum-bond laminated for extra strength and durability
- Unique automotive exterior styling: includes a molded ABS rear bumper, automotive tail lights and ground effects, and painted trim that perfectly complements the overall exterior look
- A fully laminated, aerodynamic roof with ABS end caps
- Strong aluminum extrusions — powder-coated for extra durability and good looks
- A 17-gallon water tank mounted underfloor and centered in the unit — frees up cabinet space and does not affect hitch weight
- Tandem axles on Cardinal model — unique to Jayco — for extra-smooth towing and greater cargo capacity
- Chrome-centered hubcaps
- Backup lights for added safety and convenience
- A 20-amp electrical system



Convenient Overhead Cabinet for extra storage space



Entrance Step built into Stepwell



ABS Rear Cap has Full-width Storage Compartment with Spare Wheel



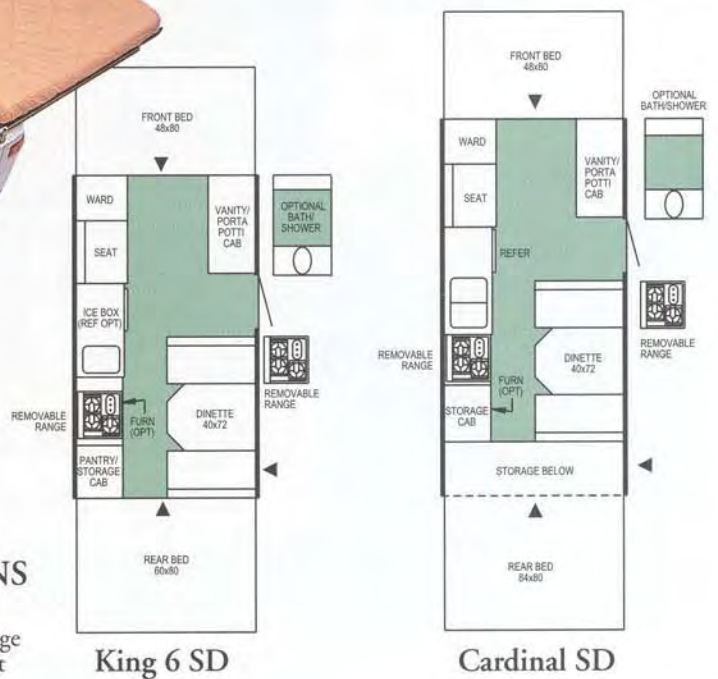
Designer Series Cardinal SD

Designer Series  
Cardinal SD



**FLOOR PLANS**

SD = Side Dinette  
▲ = Outside Storage Compartment





Bathroom features shower, hot & cold faucets, dressing-area curtains, cassette porta-potti, holding tank, water heater, demand water pump, and 20-amp converter



Boat Rack holds boats of up to 200 pounds



Bike Rack is designed to hold either one or two bicycles



Canopy with Screen Room provides extra living space; lets fresh air in; keeps bugs out

## OPTIONS

All the features you need for comfortable, home-like living come standard in Jayco fold-downs. But we realize that everyone has his or her own *special* wants. That's why we offer the fine options you see here ... plus a number of others you definitely should ask your dealer about. Every option is designed to make vacation camping extra fun, extra carefree!



3-way (110-volt, 12-volt, LP-gas) Refrigerator (standard in Cardinal SD) or 1.7 cu. ft. 110-volt electric Refrigerator



Innovative, new Power-driven Roof-lifter System has convenient Push-button control (Patent Pending)

## SPECIFICATIONS

MODELS	Travel length	Campsite length	Approximate travel height	Approximate campsite height	Exterior width	Approximate dry wt. w/stand. equip.(lbs.)	Approximate dry axle wt. w/stand. equip.(lbs.)	Approximate dry hitch weight (lbs.)	Gross Vehicle Weight Rating	
	<b>DES</b>	King 6 SD	17'5"	22'2"	57-3/4"	99-3/4"	85"	1915	1715	200
	Cardinal SD	19'5"	24'2"	57-3/4"	99-3/4"	85"	2405	2170	235	3330
<b>JAY</b>	1006	14'8"	21'6"	52-1/2"	100-1/2"	81"	1370	1210	160	2210
	1006 ST	16'10"	21'6"	53"	101"	81"	1515	1405	110	2255
	1007	14'8"	21'6"	52-1/2"	100-1/2"	81"	1410*	1210*	200*	2210
	1206	16'10"	22'2"	56-3/4"	98-3/4"	85"	1685	1490	195	2460
	1206 KB	16'10"	24'	56-3/4"	98-3/4"	85"	1685	1475	210	2460
	1207	16'10"	22'2"	56-3/4"	98-3/4"	85"	1745	1535	210	2460
	1207 KB	16'10"	24'	56-3/4"	98-3/4"	85"	1745	1535	210	2460
	1406	18'10"	23'8"	56-3/4"	98-3/4"	85"	1985	1770	215	3330
<b>EAGLE</b>	8	12'8"	17'4"	48-1/4"	96-1/4"	81"	1090	955	135	1940
	8 SD	12'8"	17'4"	48-1/4"	96-1/4"	81"	1110	965	145	1940
	10	14'8"	21'6"	50-1/4"	98-1/4"	81"	1325	1160	165	2210
	10 UD	14'8"	21'6"	50-1/4"	98-1/4"	81"	1365	1180	185	2210
	10 ST	16'10"	21'6"	50"	98"	81"	1470	1360	110	2255
	12 KB	16'10"	24'	55"	97"	85"	1680	1480	200	2460
	12 UDK	16'10"	24'	55"	97"	85"	1705	1515	190	2460
	12 UD	16'10"	22'2"	55"	97"	85"	1705	1515	190	2460

\*Estimated weights based on engineering data

**LIFETIME LIMITED WARRANTY**  
Jayco, Inc., warrants to the original purchaser of every Jayco fold-down camping trailer that the lifter system, steel frame, floor, and roof are free from substantial defects in materials and workmanship for the lifetime of the fold-down camping trailer. There are certain exclusions to this lifetime limited warranty, details of which are available at your Jayco dealership.

**LIMITED WARRANTY ON TENT AND OTHER COMPONENTS**  
Jayco, Inc., warrants to the original purchaser of every Jayco fold-down camping trailer that the tent material is free from functional defects in materials and workmanship for three (3) years from the date of purchase; parts, labor, and freight covered the first year; parts and freight only the second year; parts only at 50% of retail price the third year. Other components are warranted for twelve (12) months for parts and labor from the date of purchase. There are certain exclusions to this limited warranty, details of which are available at your Jayco dealership. Separate manufacturers' warranties cover various components used in Jayco products.

**PLEASE NOTE**  
All information in this brochure is the latest available at the time of publication approval. Jayco reserves the right to make changes and to discontinue models without notice or obligation. Pictures in this brochure may show optional equipment. RVs built for sale in Canada may differ to conform to Canadian codes.

For Further Information and Prices, See:

Welcome Home



Jayco, Inc.  
P.O. Box 460  
Middlebury, IN 46540

