

# NEW! From Jayco...

## Big Living In Mid-sized Travel Trailer

Now you can have all the advantages of a Standard "Super Slide" in an easy-to-tow precision-sized travel trailer. These all new 1995-1/2 Eagle and Designer trailers are chock full of features which will allow your family to stretch out and enjoy the good life. All in a relatively compact, affordable floor plan.

Beautifully appointed, fully equipped with the look and feel of Jayco. The new Eagle 282 FKSS and Designer 2820 FKSS are designed to keep you in home-like comfort wherever your travels take you. From our family to yours ....

## Welcome Home



# Jayco

Jayco, Inc.

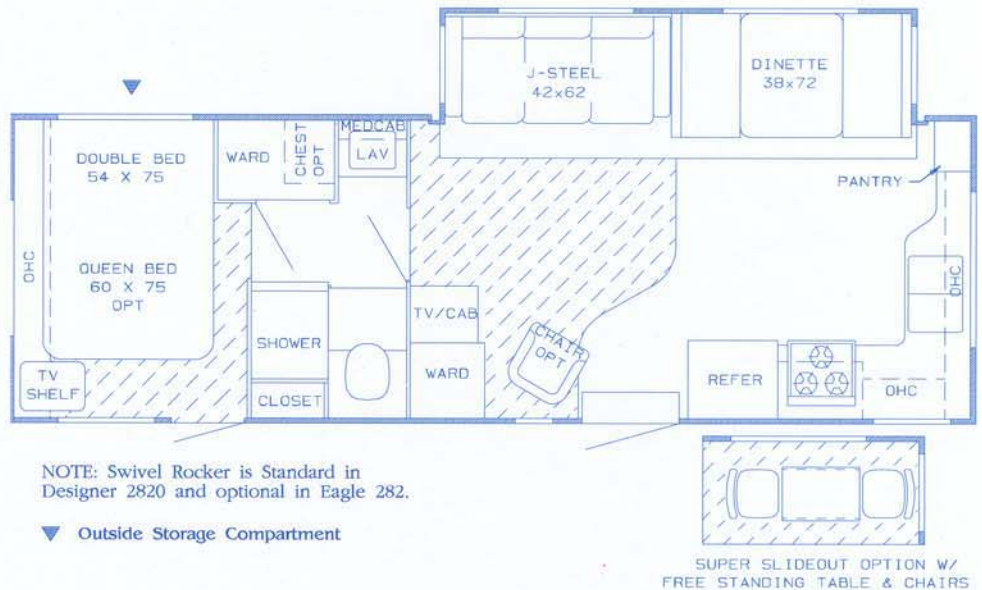
P.O. Box 460 • Middlebury, IN 46540



Printed Entirely on Recycled Paper

For Further Information and Prices, See:

## The All New Eagle 282 FKSS and Designer 2820 FKSS



## A Few Notable Features:

### Eagle 282 FKSS

- Standard Super Slide • Ducted Floor Heat • Auto Ignition Furnace with Thermostat • Systems Monitor Panel • Patio Light • Dead Bolt Lock on Entrance Door • Stain Ground 100% Nylon Carpeting • Crank-up TV Antenna with Signal Booster • Deep, Large Capacity Cabinets and Wardrobes • Large Capacity, Flush Mount Double Door Refrigerator • A Three Burner Range with High Output Front Burner and Built In Oven • ABS Shower Surround • Power Vent in Bath • Double Six Inch Steel Tube Chassis Frame • Tough Darco Underfloor Covering • Dependable Tongue & Groove -5/8" Plywood Floor • Fiberglass Insulation Cut and Glued into Walls

### Designer 2820 FKSS

In addition to the many standard features found in the Eagle Series, following are a few of the Designer Features:

- ABS Gas Bottle • Chrome Bumper Cover • Recessed Tail Lights • Recessed Water Fill • Fiberglass Front and Rear Caps • Solid Oak Cabinet Door and Drawers • Mini Blinds • Floor Level Courtesy Lights • Bi-Fold Stove Cover • Pleated Shower Door • Upgraded Custom Designed Interior • White Radius Cornered Entrance Door and Storage Compartment Doors

### SPECIFICATIONS

	Eagle 282 FKSS	Designer 2820 FKSS
Exterior Length	29' 3"	29' 3"
Exterior Height	119"	119"
Interior Headroom	77"	77"
Approx. Dry Weight of Unit	6420	6900
Approx. Dry Hitch Weight	922	990
GVWR	9500	9500
Approx. Weight-Opt. F/G Sidewall	N/A	425
Furnace (BTU)	31M	31M
Fresh Water Tank (Gals.)	36	36
Gray Water Holding Tank (Gals.)	71	71
Toilet/Waste Holding Tank (Gals.)	42	42
Awning Size	18'	18'