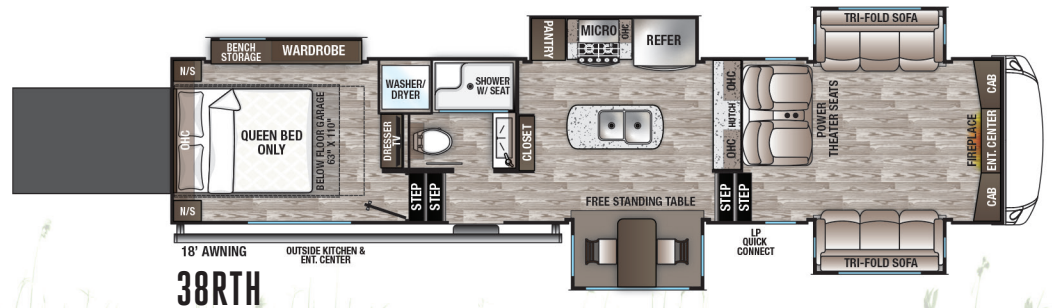
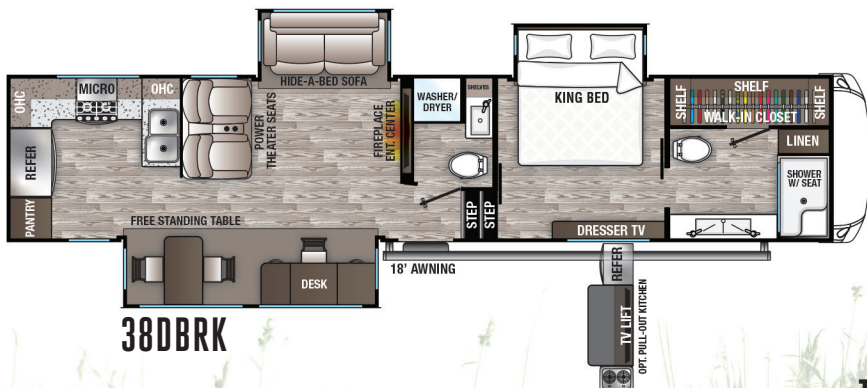
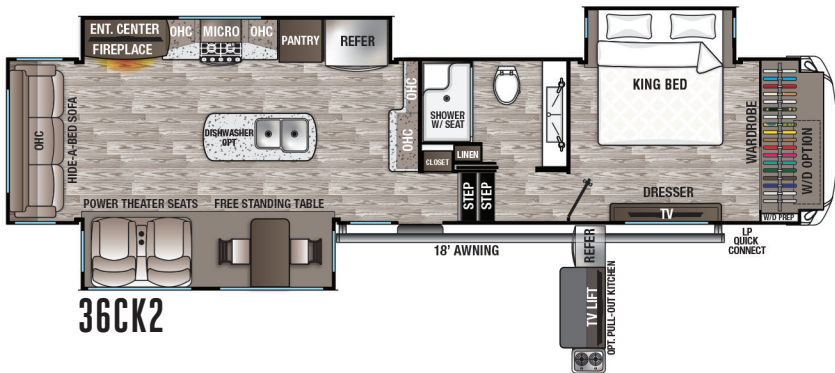
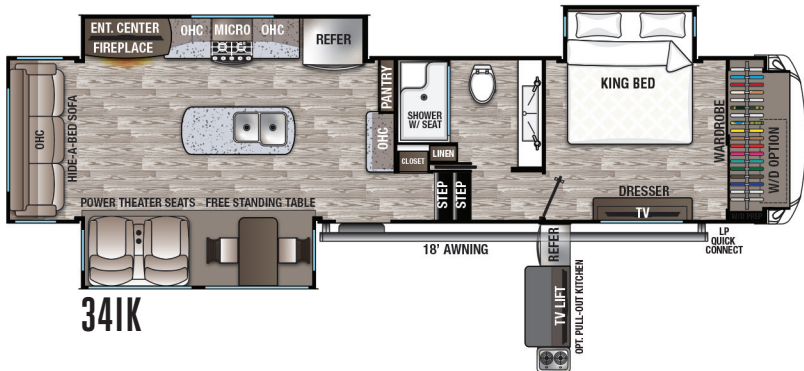


# Cedar Creek

# HATHAWAY



THE SMART CHOICE FOR THE EXPERIENCED RV'ER ... WHEREVER THE ROAD LEADS

## FEATURES AND OPTIONS

### HATHAWAY EDITION PACKAGE

#### (Mandatory Features)

- "True" gelcoat exterior (the best of the best in exteriors)
- "True" gelcoat, painted front cap
- Cedar Creek's famous all aluminum superstructure on 16" centers or less
- Silaprene® bonded sidewalls – resilient, grows stronger with age. Also has outstanding resistance to UV, heat, cold, moisture, oils, gasoline, highway chemicals and creates a bond that cannot delaminate with time
- Extra wide 32" entry door with a friction hinge and MorRyde® Easy-Steps™
- 50 Amp cord reel
- Quick Disconnect, Exterior LP Gas Connection
- 12 Gallon DSI/Electric hot water heater with bypass kit
- Solar prep
- LED lighting throughout
- Congoleum floor covering in the living room and bedroom
- Shaw carpeting in the dining slide
- European Beech cabinet doors and fascia with high sheen glaze in kitchen and living room
- Full pantry in the kitchen areas
- (2) Quiet Zone, ducted, high capacity air conditioners with dual zone control and cold air returns
- 50" Television with swing arm
- 20 Cu. ft. stainless steel electric refrigerator with icemaker with dedicated inverter
- Solid surface countertops with stainless steel under-mounted sinks
- Day/night shades
- Power theater seating with USB ports
- Luxury hide-a-bed sofa
- 36" Fireplace
- Standard gel foam king bed mattress

### EXTERIOR FEATURES

- Exterior graphics design with 5 year warranty
- Hehr® frameless, tinted automotive style windows
- Z-frame with metal wrapped skirting to the frame
- DEXTER® Safety and Performance Package
  - Heavy duty axles with E-Z Lube® hubs
  - Nev-R-Adjust® brakes
  - E-Z Flex™ suspension with greased zerf fittings
  - Bronze bushings for shackles (no plastic)
- 16" E and G special trailer (ST) tires 17.5 on "H"
- 1-1/4" Thick baggage doors with slam latches
- 4' x 6' ABS, ribbed, removable underbelly panels for easy access into the underbelly
- Full, walk-on roof with TPO vinyl roof covering
- Wired for Furrion® rear camera
- 12V Heating pads on all black, grey and fresh water tanks
- A and E Black electric awning with upgraded fabric and LED night lights
- Full docking station with multi-function tank levers, outside shower, black tank flush, 12V battery disconnect
- Door side, cold water port
- Heated front storage compartment with slam door baggage latches with magnetic catches
- 2" Bike rack receiver
- One year of Saferide™ RV Roadside Assistance
- Free membership to Forest River Owners Group F.R.O.G.



### ELECTRONICS

- New Cedar Creek Connect Anywhere Control Center
- 32" Television in the bedroom
- (2) Exterior satellite and cable hook-ups to bedroom and living room
- Pre-wired for satellite to the roof

### KITCHEN FEATURES

- Full extension drawer glides with self-closing drawers
- Edison LED lighting fixtures with lighted tin medallion
- 48" x 22" Window in the kitchen slide
- Residential, high top, swivel, kitchen faucet with pull-out sprayer

- Stainless steel, 30" over the range microwave
- Insignia, free standing 24" gas range
- Full panel backsplashes where applicable
- Backlit medallion over the island
- Intervac central vacuum system with front storage compartment port
- Free standing table with leaf and (4) chairs (2 Folding/2 stationary with hidden storage)
- Wooden silverware organizer
- Fantastic Create-a-Breeze fan with rain sensor and thermostat

### LIVING ROOM

- Larger full view windows (Every window opens for ventilation)
- Congoleum® flooring (Carpet mandatory in dining slide)

### BATH FEATURES

- Full 48" x 30" rectangular shower with large seat and sliding glass doors
- Newly redesigned bathroom with residential, double basin, trough sink
- New design trough sink with (1) faucet (38RTH only)
- Skylight
- Upgraded shower head
- 18" High porcelain toilet with top circular flush system
- Large 10" blade Create-A-Breeze Fan with wall switch
- Convenient wall switches for fan and lights
- Congoleum® flooring
- Extra storage for linens
- LED night lighting under the vanity

### BEDROOM FEATURES

- Black-out night shades
- Congoleum® flooring
- Residential style headboard with luxurious bedding décor
- Redesigned front wardrobe closet with removable cabinets to accommodate a side-by-side washer/dryer
- USB Plug-ins on each side of the bed
- Storage area under the bed
- Prepped for an optional washer and dryer

MODEL	34IK	36CK2	38DBRK	38FBD	38RTH
GVWR	16190 lb.	16525 lb.	18000 lb.	18000 lb.	18000 lb.
Hitch Weight	2190 lb.	2525 lb.	2100 lb.	2295 lb.	3176 lb.
UVW	12224 lb.	13134 lb.	12809 lb.	13824 lb.	14190 lb.
CCC	3966 lb.	3391 lb.	5132 lb.	4176 lb.	3810 lb.
Exterior Length	37' 1"	38' 10"	40' 4"	39' 9"	40' 7"
Exterior Height	13' 5"	13' 5"	13' 5"	13' 5"	13' 5"
Exterior Width	96"	96"	96"	96"	96"
On Demand Fresh Water	69 gal.	69 gal.	69 gal.	69 gal.	69 gal.
Gray Water	80 gal.	80 gal.	80 gal.	80 gal.	80 gal.
Black Water	40 gal.	40 gal.	40 gal.	80 gal.	40 gal.
Awning Size	18 ft.	18 ft.	18 ft.	18 ft.	18 ft.

**GVWR (Gross Vehicle Weight Rating)** - is the maximum permissible weight of the unit when fully loaded. It includes all weights, inclusive of all fluids, cargo, optional equipment and accessories. For safety and product performance do NOT exceed the GVWR.

**GAWR (Gross Axle Weight Rating)** - is the maximum permissible weight, including cargo, fluids, optional equipment and accessories that can be safely supported by a combination of all axles.

**UVW (Unloaded Vehicle Weight)\*** - is the typical weight of the unit as manufactured at the factory. It includes all weight at the unit's axle(s) and tongue or pin and LP Gas. The UVW does not include cargo, fresh potable water, additional optional equipment or dealer installed accessories.

\*Estimated Average based on standard build optional equipment.

**CCC (Cargo Carrying Capacity)\*\*** - is the amount of weight available for fresh potable water, cargo, additional optional equipment and accessories. CCC is equal to GVWR minus UVW. Available CCC should accommodate fresh potable water (8.3 lbs per gallon). Before filling the fresh water tank, empty the black and gray tanks to provide for more cargo capacity.

\*\*Estimated average based on standard build optional equipment.

Each Forest River RV is weighed at the manufacturing facility prior to shipping. A label identifying the unloaded vehicle weight of the actual unit and the cargo carrying capacity is applied to every Forest River RV prior to leaving our facilities. The load capacity of your unit is designated by weight, not by volume, so you cannot necessarily use all available space when loading your unit.

## OPTIONS

- 6-Point hydraulic leveling system
- Trailair air ride hitch
- Dual pane, frameless tinted windows
- Slide-out awning toppers
- Second 12' THULE® power awning on dining slide (N/A 38RTH)
- Heat pump on main air conditioner
- Truma™ On-Demand hot water system
- Full body paint package
- Generator prep
- 5.5 Marquis Gold Onan generator with prep
- Forest River exclusive – 200 watt solar panel
- King, roof-mounted satellite – My Dish RV flexible programming including local channels
- 18 Cu. Ft., stainless steel, gas/electric refrigerator
- 30" Convection/microwave
- Trackless Shaw® carpet in the living room or bedroom
- Dishwasher in the island
- Booth dinette
- Cedar Creek Outdoor Party Center in front storage compartment
- Upgraded luxury 10" king mattress
- Upgraded luxury 10" queen mattress
- Optional side-by-side washer/dryer
- Cadet wall-mounted heater with circulation fan
- Wireless Rear Observation Camera
- (4) Camera Safety and Security System

*Cedar Creek*

HATHAWAY EDITION

The Smart Choice for the Experienced RV'er

**FOREST RIVER INC. CEDAR CREEK DIVISION**

501 Hawpach Road • Topeka, IN 46571

Phone: 260-593-2404

Parts & Service Phone: 260-593-4000

On The Web at: [www.forestriverinc.com/cedarcreek](http://www.forestriverinc.com/cedarcreek)



YOUR CEDAR CREEK HATHAWAY DEALER



All information contained in this brochure is believed to be accurate at the time of publication. However, during the model year, it may be necessary to make revisions and Forest River, Inc., reserves the right to make all such changes without notice, including prices, colors, materials, equipment and specifications as well as the addition of new models and the discontinuation of models shown in this brochure. Therefore, please consult with your Forest River dealer and confirm the existence of any materials, design or specifications that are material to your purchase decision. ©2019 Cedar Creek. A division of Forest River, Inc., a Berkshire Hathaway Company, 9/19 Hathaway