



ENTEGRA
COACH®



C O R N E R S T O N E | A N T H E M | A S P I R E | 2 0 1 5

THE QUIETEST RIDING,
BEST HANDLING COACH
ON THE MARKET TODAY. PERIOD.



In a world of “me-too” products, the real game changers are companies who understand that design is not just about look and feel, but also functionality. That was the inspiration behind every great product from the Model T to the iPhone. And it’s what is making the Entegra Coach line of motorhomes the envy of an industry.

Built for the long haul, Entegra Coach offers unsurpassed luxury and the confidence from knowing our designers, engineers and craftsmen have scrutinized every last detail. They continually challenge conventional thinking and in many ways have redefined how luxury coaches are conceived and ultimately brought to market. Introducing, without question, the quietest riding, best handling coach on the market today. Period.



ENTEGRA
COACH®

CORNERSTONE | THE PINNACLE OF INNOVATION





FEATURES: Standard electric fireplace with hardwood detailing and stylish mantle | Fisher & Paykel dishwashing drawer | Sink covers, sprayer and ornate tiled backsplash



FEATURES: Spacious bedroom with ceiling fan | Kitchen area includes countertop extension drawers | Bathroom featuring quartz countertops with integrated sinks



LUXURIOUS. INSIDE AND OUT.

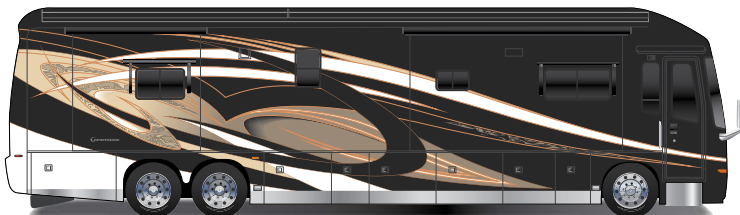
Powered slideout storage | Sleep Number remote | Outside entertainment center | Awning with LED lighting | Porcelain tiled shower and floor | Cockpit featuring backup camera monitor, Sirius Satellite radio and a large windshield for optimal visibility



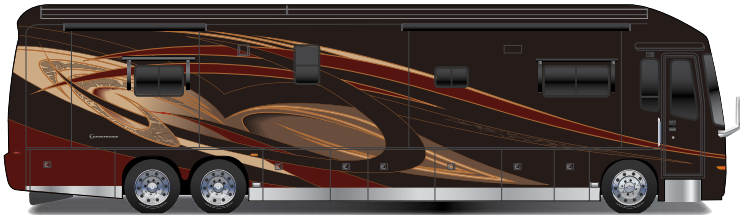
CORNERSTONE | PAINT PACKAGES | FLOOR PLANS | SPECIFICATIONS



Topaz



Sunlit



Cayenne



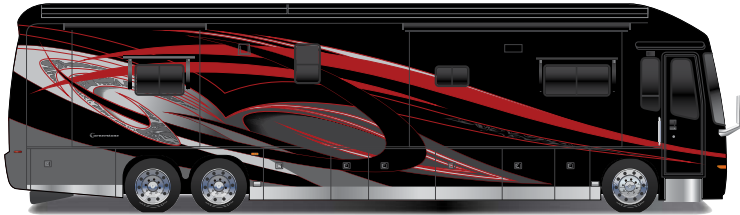
Molten Metal



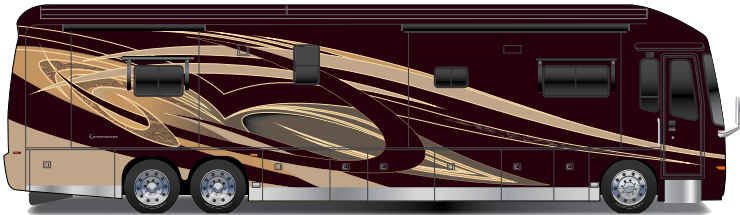
Electric Blue



Golden Splendor

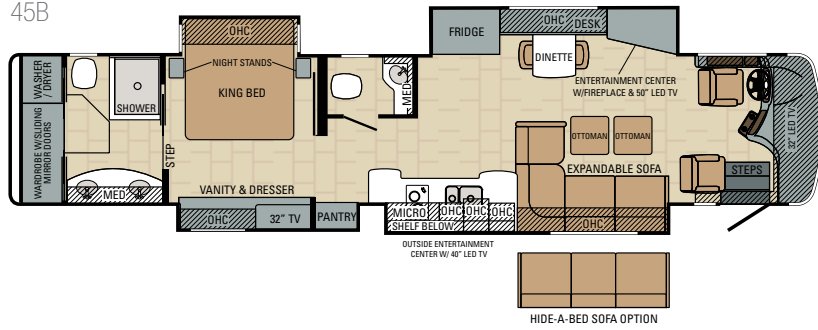


Fire Red

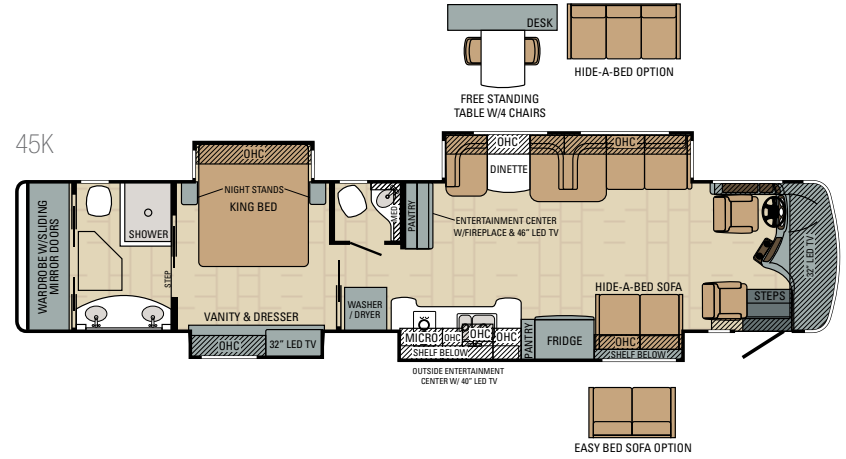


Champagne

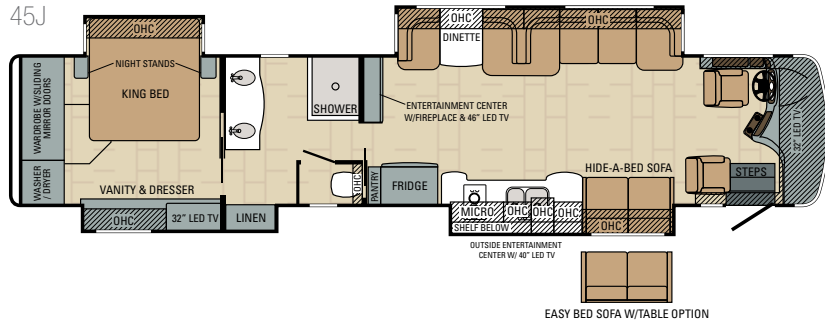
45B



45K



45J

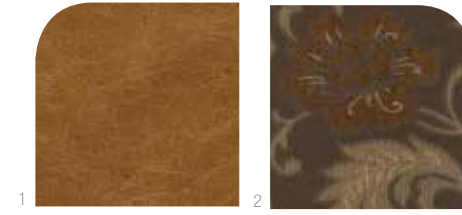
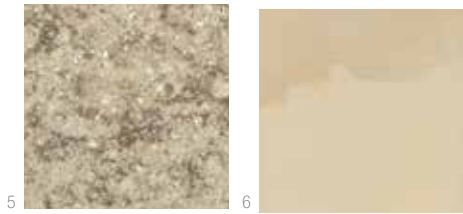
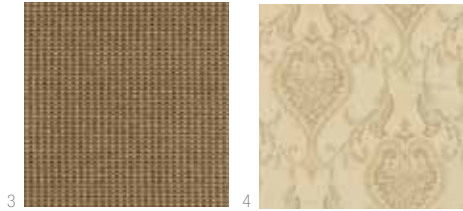


Floorplan	GVWR (lbs)	GCWR (lbs)	Front GAWR (lbs)	Rear GAWR (lbs)	Tag GAWR (lbs)	Wheel Base	Overall Length	Exterior Height w/ A/C & Satellite	Exterior Width	Interior Height	Fresh Water Capacity (gal.)	Gray Waste Water Capacity (gal.)	Black Waste Water Capacity (gal.)
45B	54,000	74,000	20,000	20,000	14,000	320"	44' 11"	12' 11"	101"	84"	95	49.75	49.75
45J	54,000	74,000	20,000	20,000	14,000	320"	44' 11"	12' 11"	101"	84"	95	49.75	49.75
45K	54,000	74,000	20,000	20,000	14,000	320"	44' 11"	12' 11"	101"	84"	95	49.75	49.75



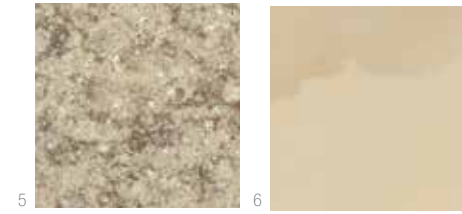
STANFORD

- 1. Sofa & Dinette**
Fundamental Walnut (leather)
- 2. Accent (main)**
Bradshaw Stone
- 3. Kitchen Chair**
Bequest Raffia
- 4. Bedspread**
Hafia Ivory
- 5. Countertop**
Walnut Luster
- 6. Tile**
Buenes Polo



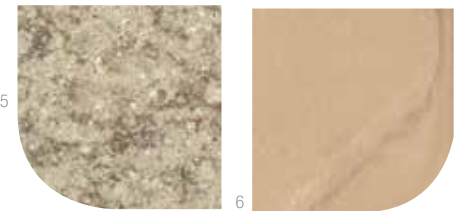
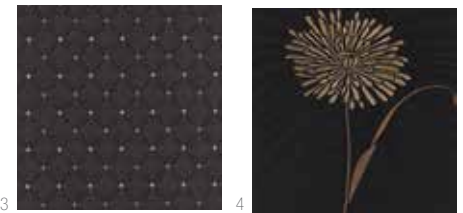
MOCHA

- 1. Sofa & Dinette**
Heirloom Saddle (leather)
- 2. Accent (main)**
Anniston Brown
- 3. Kitchen Chair**
Alessi Brown
- 4. Bedspread**
Grove Wenge
- 5. Countertop**
Walnut Luster
- 6. Tile**
Buenes Polo



MIDNIGHT PEARL

- 1. Sofa & Dinette**
Augusta Sand (leather)
- 2. Accent (main)**
Romo Onyx
- 3. Kitchen Chair**
Brewster Onyx
- 4. Bedspread**
Dowery Ebony
- 5. Countertop**
Walnut Luster
- 6. Tile**
Buenes Pampa



WOOD

- 7. Wood**
Windsor Glazed Cherry (a)
Tuscan Cherry (b)
Natural Cherry (c)
- 8. Wood (bath)**
Caramel Glazed Maple



STANDARD BATHROOM EQUIPMENT

Frameless full view glass shower surround
Porcelain tile shower pan and walls
Porcelain toilet with push-button flush
Power vent with thermostat and rain cover
Quartz countertops with integrated sink(s)
Skylight in shower

STANDARD BEDROOM EQUIPMENT

Bose Solo sound bar
Ceiling fan
King Select Comfort Sleep Number air mattress
Large cedar-lined wardrobe
Remote secure coach locking system
Samsung 32" LED HDTV

STANDARD CHASSIS EQUIPMENT

(2) chassis batteries
150-gal. fuel tank (dual fill)
15-gal. DEF tank
20,000-lb. hitch with 7-pin plug
210-amp alternator
4.30 "Quiet-Gear" rear axle ratio
55-degree turning radius
60 mm heavy duty Bilstein shocks
Allison 4000 MH 6-speed transmission
All-wheel ABS brakes
Automatic traction control
Cummins 15 liter ISX turbocharged 600HP engine 1,950 lb.-ft. torque at 1,200 RPM
Engine block heater
Hadley Air Leveling "Smart Air" management system
Michelin 365/70R 22.5" tires (front) and 315/80R 22.5" tires (rear)
Raised rail chassis
Rear axle 20,000-lb., tag axle 14,000-lb.
Remote air connection
Reyco Granning front axle 20,000-lb. wide track
Reyco Granning IFS independent front air suspension
Ridewell 246 air suspension
Side-mounted radiator
Spartan K3 chassis
Tag axle auto weight release
Three-stage Jake brake

STANDARD CONSTRUCTION FEATURES

2" x 4" floor truss construction
2-1/2" wall with welded tubular construction
3/4" 7-ply plywood main floor decking
4-1/2" arched aluminum truss roof
Aluma-Tru Superstructure construction on 16" centers
Cabinetry crafted with screwed hardwood stile construction
Electric-powered slideouts
Enclosed, insulated and heated floor and thermostat controlled heating in storage area
Frameless, flush-mounted slideout rooms
Fully decked roof with 3/8" plywood
One-piece fiberglass roof
Polar Pack insulation with reflective Flexfoil: floor (R-33), roof (R-24), sidewalls (R-16), front and rear (R-22)
Smooth high-gloss, gel-coat fiberglass exterior walls
Steel-reinforced front cap and windshield frame
X-Bridge frames welded into chassis frame

COCKPIT AMENITIES

8-way power, lumbar, heated, leather driver and passenger seats with integrated 3-point lap and shoulder safety belts
Adjustable foot pedal
Battery boost switch
CB prep with antenna
Chassis battery disconnect
Color back-up camera and monitor
JBL premium sound system with dash speakers
Powered front sun visors and privacy shade
Powered roller side sun visors and privacy shades
Powered flush stepwell cover
Samsung 32" LED HDTV
Side cameras with turn signals
Sirius radio and tuner
Spartan Message Center with LCD display featuring: odometer, tachometer, instantaneous fuel economy, fuel remaining, outside air temp., coolant temp., engine oil temp. and pressure, transmission temp., turbo boost pressure, air pressure, diagnostic functions, fault codes, service reminders, percentage of engine load, trip meter, speed and voltage
Touch control for hydraulic automatic leveling jack system
Touch-screen AM/FM/CD/DVD with Rand McNally GPS navigation, Bluetooth and 4 speakers
Trip-Tek Information Center
Ultra-Vision one-piece wrap-around tinted windshield
VIP SmartWheel steering wheel with integrated controls for radio, cruise and wipers

STANDARD EXTERIOR EQUIPMENT

3M front protective film mask
Aerodynamic front cap with integrated awnings
Carefree power entrance door awning with LED lights
Carefree slideout and window awnings
Chrome, heated, remote control, side-view mirrors
Daytime running lights
Electric-powered, double-step entrance
Faux driver's side awning box with LED lights
Fog lights
Frameless, tinted, dual-pane, safety-glass windows
Full-width rear mudflap
Keyless entry with key fob
LED accent lights on underside of curbside slideout rooms
LED docking lights
Lighted heavy-duty grab handle with keypad system
Power bay door locks integrated with key fob and touch pad
Powered generator slideout tray
Powered slideout cargo trays (2)
Rear-molded fiberglass cap with integrated rear intake
Roof-integrated, 2-stage powered awning with LED lights
Samsung 40" LED HDTV with Sony CD/DVD Dual DIN player and dual speakers
Sliding battery tray (2)
Uni-Dock exterior utility center, heated and enclosed with second system monitor panel
Winegard in-motion, dome, roof-mounted satellite dish
Xenon high visibility headlights

HEAT, POWER AND WATER EQUIPMENT

12V on-demand water pump with two switch locations
15,000-BTU low profile central A/Cs (3) with heat pump, digital thermostat and drain tubes with ducted returns
2,800-watt and 2,000-watt pure sine wave inverters with (8) 6V glass mat batteries
5-watt solar panel (for chassis batteries)
50-amp quick-connect power cord with electric reel

Aqua-Hot 450 diesel hydronic water and heating system with in-floor heat throughout
Black holding tank sprayer
Energy Management System
Onan 12.5kW diesel generator with auto gen start with A/C shore sensor
Power auto rewind water hose
SeeLevel™ tank monitoring system
Total coach dual system water filter
Winterizing kit

STANDARD INTERIOR EQUIPMENT

Aire-Secure travel locks for passage doors
Bose CineMate 1 SR digital home theater speaker system
Central vacuum system
Electric fireplace
Five pull out trays in overhead cabinet
Hidden safe
High gloss 12" x 24" porcelain tile
Individually operated power day/night solar roller shades throughout
Leather furniture
LED recessed 12V lighting
Lights at entrance steps
Multiplex lighting
Samsung 46" LED HDTV (45J, 45K)
Samsung 50" LED HDTV (44B)
Slideouts controlled with remote and wall switch
Stackable washer and dryer

STANDARD KITCHEN EQUIPMENT

Cutting board
Dishwasher drawer
Flush-mounted, electric 2-burner induction cooktop
High gloss 12" x 24" porcelain tile with granite inlay design
Large deep drawer with waste basket
Pullout cabinet extension with countertop
Quartz surface countertops with integrated stainless sink
Samsung 1.7 cu. ft. convection microwave oven with carousel
Samsung residential 23 cu. ft. refrigerator with ice maker and water dispenser
Silverware drawer, divided for utensils
Under-sink, sink cover storage compartment

STANDARD SAFETY EQUIPMENT

Carbon monoxide alarm
Deadbolt lock on entrance door
Egress window
Fire extinguisher
Lap safety belts in living area
Motion sensor security lights (2)
Security system with glass shatter sensors
Smoke alarm
Third brake light

OPTIONS

Auto sewer connection
Shaw Direct Canada Satellite TV
Canadian standards
Exterior freezer with slideout tray
Free-standing table with 4 chairs and hide-a-bed, sofa lounge curbside (N/A on 45B)
VegaTouch iPad Control Center
Leather 100" sofa with ottoman, incliner & hide-a-bed (N/A 45K & 45J)
Mobileye driving alert system
Premium entertainment system (mandatory option)
Solar panels (dual 100-watt)
Winegard Trav'ler satellite dish

ANTHEM

PERFORMANCE DISGUISED AS SPLENDOR





FEATURES: Spacious bedroom with ceiling fan | Solid surface vanity with integrated sinks | Porcelain tile shower | Multiplex lighting system



FEATURES: Driver area includes backup camera monitor, Sirius Satellite radio, and large windshield | Lighted grab handle with keypad | Slideout storage | Awning with LED lighting | Outside entertainment center | Slide out waste basket drawer

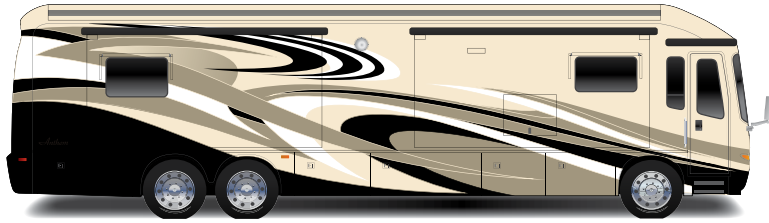


RIDE IN THE LAP OF ELEGANCE.

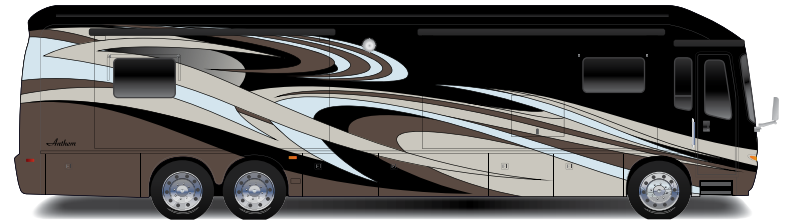
Solid surface countertops with stainless steel sink | Standard electric fireplace | Fisher & Paykel dishwashing drawer | Pull out counter extension and deep sliding drawers



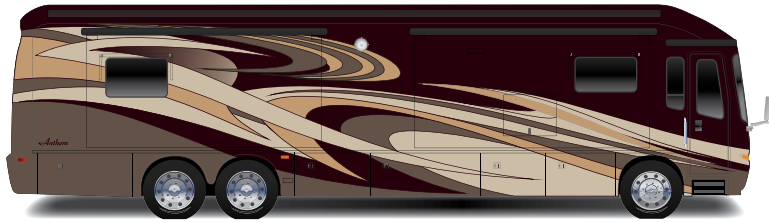
ANTHEM | PAINT PACKAGES | SPECIFICATIONS | FLOOR PLANS



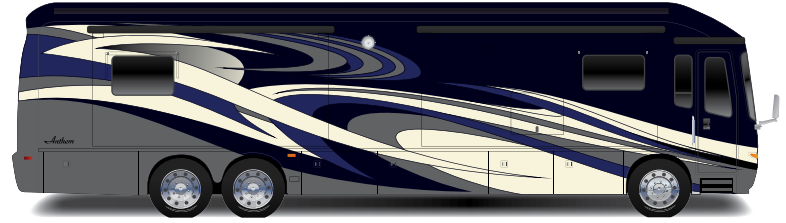
Beachstone



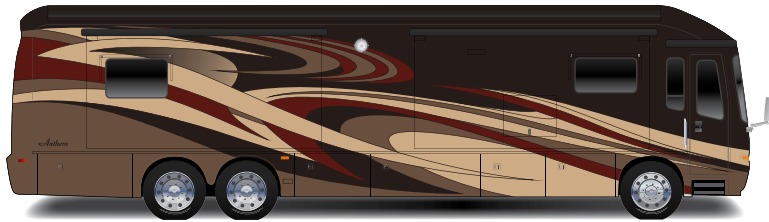
Dusk



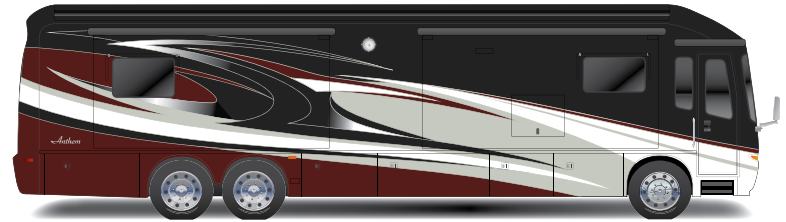
Goldmist



Lapis

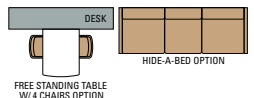
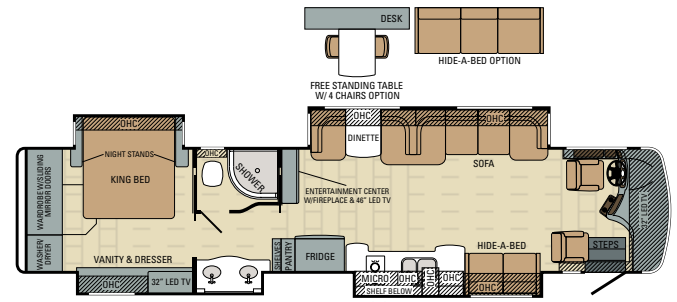
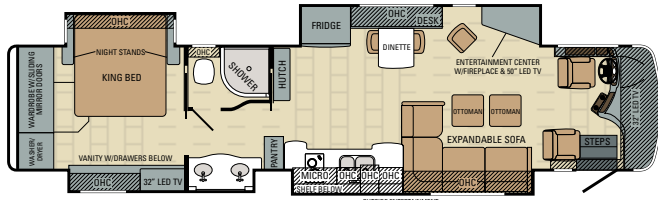


Splendor

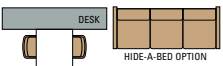
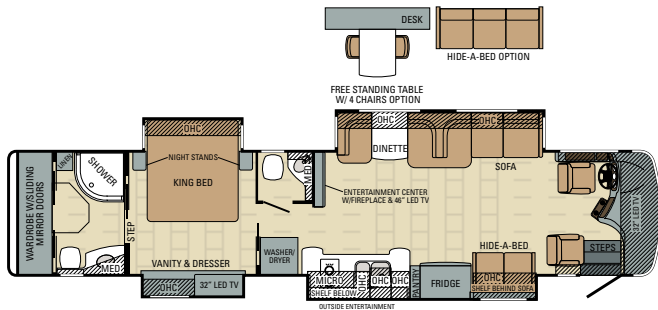


Midnight Illusion

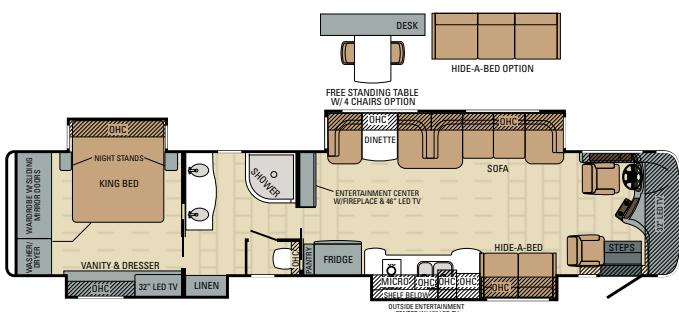
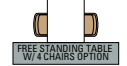
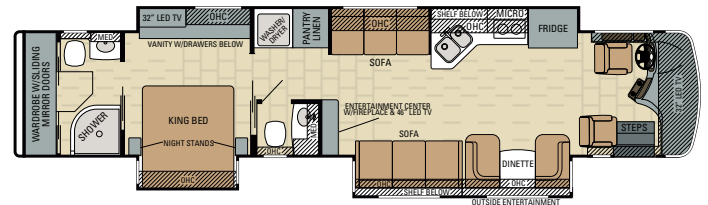
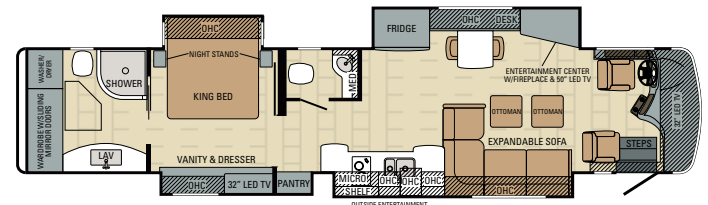
Floorplan	GVWR (lbs)	GCWR (lbs)	Front GAWR (lbs)	Rear GAWR (lbs)	Tag GAWR (lbs)	Wheel Base	Overall Length	Exterior Height w/ A/C & Satellite	Exterior Width	Interior Height	Fresh Water Capacity (gal.)	Gray Waste Water Capacity (gal.)	Black Waste Water Capacity (gal.)
42DEQ	49,000	64,000	17,000	20,000	12,000	296"	43' 1"	12' 11"	101"	84"	95	49.75	49.75
42DLQ	49,000	64,000	17,000	20,000	12,000	296"	43' 1"	12' 11"	101"	84"	95	49.75	49.75
42RBQ	49,000	64,000	17,000	20,000	12,000	296"	43' 1"	12' 11"	101"	84"	95	49.75	49.75
44B	49,000	64,000	17,000	20,000	12,000	320"	44' 11"	12' 11"	101"	84"	95	49.75	49.75
44DLQ	49,000	64,000	17,000	20,000	12,000	320"	44' 11"	12' 11"	101"	84"	95	49.75	49.75
44F	49,000	64,000	17,000	20,000	12,000	320"	44' 11"	12' 11"	101"	84"	95	49.75	49.75
44SL	49,000	64,000	17,000	20,000	12,000	320"	44' 11"	12' 11"	101"	84"	95	49.75	49.75



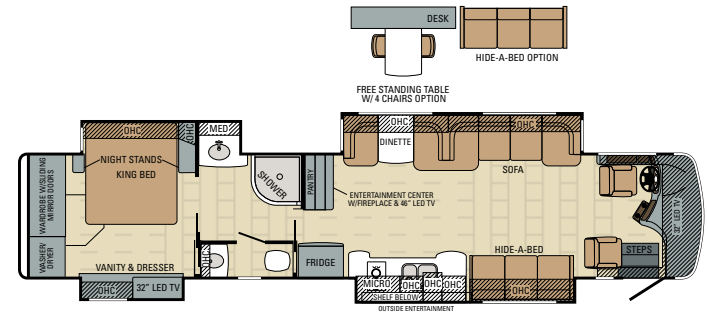
FREE STANDING TABLE W/ 4 CHAIRS OPTION



FREE STANDING TABLE W/ 4 CHAIRS OPTION

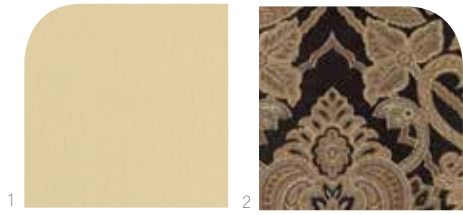


FREE STANDING TABLE W/ 4 CHAIRS OPTION



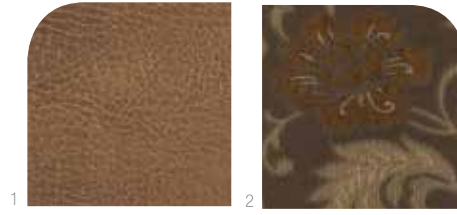
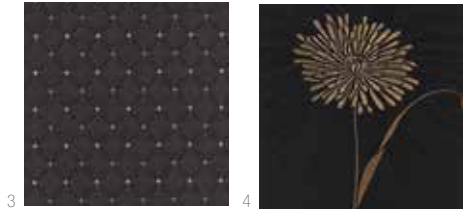
FREE STANDING TABLE W/ 4 CHAIRS OPTION





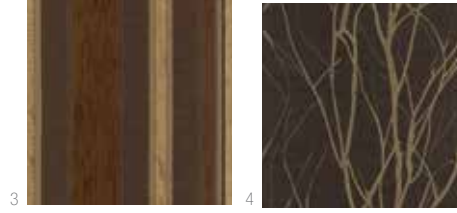
BOARDWALK

1. **Sofa & Dinette**
Ultra Buff (leather)
2. **Accent (pillow)**
Romo Onyx
3. **Kitchen Chair**
Brewster Onyx
4. **Bedsread**
Dowery Ebony
5. **Countertop**
LG Lucca
6. **Tile**
Porcelain Del Nord Alaska



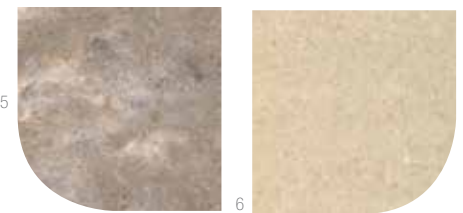
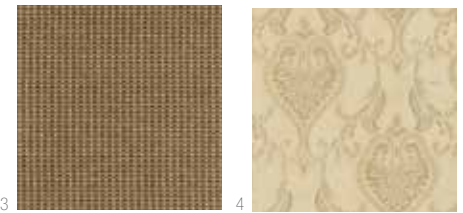
MOCHA

1. **Sofa & Dinette**
Brisa Distressed Lasso
2. **Accent (pillow)**
Anniston Brown
3. **Kitchen Chair**
Alessi Brown
4. **Bedsread**
Grove Wenge
5. **Countertop**
LG Lucca
6. **Tile**
Porcelain Del Nord Alaska



GALAXY

1. **Sofa & Dinette**
Brisa Distressed Steerhide
2. **Accent (pillow)**
Bradshaw Stone
3. **Kitchen Chair**
Bequest Raffia
4. **Bedsread**
Haifa Ivory
5. **Countertop**
LG Lucca
6. **Tile**
Porcelain Del Nord Alaska



WOOD

7. **Wood**
Windsor Glazed Cherry (a)
Tuscan Cherry (b)
Natural Cherry (c)
8. **Wood (bath)**
Caramel Glazed Maple



STANDARD BATHROOM EQUIPMENT

Porcelain toilet with push-button flush
Porcelain tile shower with light
Power vent with thermostat and rain cover
Skylight in shower
Solid surface countertop(s) with integrated sink

STANDARD BEDROOM EQUIPMENT

Bose Solo sound bar
Ceiling fan
Hidden safe
King Sleep Number air mattress
Large cedar-lined wardrobe
Remote secure coach locking system
Samsung 32" LED HDTV

STANDARD CHASSIS EQUIPMENT

(2) chassis batteries
10-gal. DEF tank
15,000-lb. hitch with 7-pin plug
150-gal. fuel tank (dual fill)
170-amp alternator
4.88 "Quiet-Gear" rear axle ratio
55-degree turning radius
Allison 3000 MH 6-speed transmission
All-wheel ABS brakes
Automatic traction control
Bilstein shocks
Cummins ISL turbocharged 450 HP engine 1,250 lb.-ft. torque at 1,400 RPM
Engine block heater
Hendrickson rear air suspension
Michelin 315/80R tires (front) and 295/80R tires (rear)
Raised rail chassis
Rear axle 20,000-lb., tag axle 12,000-lb.
Reyco Granning front axle 17,000-lb. wide track
Reyco Granning IFS independent front air suspension
Side-mounted radiator
Spartan Mountain Master chassis
Tag axle auto weight release
Two-stage Jake brake

STANDARD CONSTRUCTION FEATURES

2" x 4" floor truss construction
2-1/2" wall with welded tubular construction
3/4" 7-ply plywood main floor decking
4-1/2" arched aluminum truss roof
Aluma-Tru Superstructure construction on 12"-16" centers
Cabinetry crafted with screwed hardwood stile construction
Electric-powered slideouts
Enclosed, insulated and heated floor and thermostat controlled heating in storage area
Frameless, flush-mounted slideout rooms
Fully decked roof with 3/8" plywood
One-piece gel-coat fiberglass roof
Polar Pack insulation with reflective Flexfoil: floor (R-33), roof (R-24), sidewalls (R-16), front and end caps (R-22)
Smooth high-gloss, gel-coat fiberglass exterior walls
Steel-reinforced front cap and windshield frame
X-Bridge frames welded into chassis frame

COCKPIT AMENITIES

Adjustable foot pedal
Battery boost switch

CB prep with antenna
Chassis battery disconnect
Color back-up camera and monitor
JBL premium sound dash speakers
Powered front sun visors and privacy shade
Powered roller side sun visors and privacy shades
Powered flush stepwell cover
Samsung 32" LED HDTV
Side cameras with turn signals
Sirius radio and tuner
Spartan Message Center with LCD display featuring: odometer, tachometer, instantaneous fuel economy, fuel remaining, outside air temp., coolant temp., engine oil temp. and pressure, transmission temp., turbo boost pressure, air pressure, diagnostic functions, fault codes, service reminders, percentage of engine load, trip meter, speed and voltage
Touch-screen AM/FM/CD/DVD with Rand McNally GPS navigation and Bluetooth
Ultraleather, power adjustable driver and passenger seats with integrated 3-point lap and shoulder safety belts
Ultra-Vision one-piece wrap-around tinted windshield
VIP SmartWheel steering wheel with integrated controls for radio, cruise and wipers

STANDARD EXTERIOR EQUIPMENT

3M front protective film mask
Aerodynamic front cap with integrated awnings
Touch control for hydraulic automatic leveling jack system
Carefree power entrance door awning with LED lights
Carefree slideout and window awnings
Chrome, heated, remote control, side-view mirrors
Electric-powered, double-step entrance
Frameless, tinted, dual-pane, safety-glass windows
Full-width rear mudflap
Keyless entry with key fob
LED accent lights on underside of curbside slideout rooms
LED docking lights
Lighted heavy-duty grab handle with keypad system
Power bay door locks integrated with key fob and touch pad
Rear-molded fiberglass cap with integrated rear intake
Roof-integrated, 2-stage powered awning with LED lights
Samsung 40" LED HDTV with Sony CD/DVD Dual DIN player with 4 speakers
Slideout cargo tray
Sliding battery tray
Uni-Dock exterior utility center, heated and enclosed with second system monitor panel
Winegard in-motion, dome, roof-mounted satellite dish
Xenon high visibility headlights

HEAT, POWER AND WATER EQUIPMENT

15,000-BTU low profile central A/Cs (3) with heat pump, digital thermostat and drain tubes
2,800-watt and 2,000-watt pure sine wave inverters with (8) 6V glass mat batteries
5-watt solar panel (for chassis batteries)
50-amp electric service
50-amp quick-connect power cord with electric reel
Aqua-Hot 450 diesel hydronic water and heating system with in-floor heat throughout
Black holding tank sprayer
Energy Management System
Onan 12.5kW diesel generator with auto gen start and A/C shore

sensor
Power auto rewind water hose
SeeLevel™ tank monitoring system
Surge protector transfer switch
Total coach dual system water filter
Winterizing kit

STANDARD INTERIOR EQUIPMENT

Aire-Secure travel locks for passage doors
Samsung 46" LED HDTV (42DLQ, 42RBQ, 44DLQ and 44SL)
Samsung 50" LED HDTV (42DEQ and 44B)
Bose CineMate 1 SR digital home theater speaker system
Central vacuum system
Electric fireplace
High gloss 12" x 12" porcelain tile floor with decoartive tile inlays throughout
Individually operated, power day/night solar roller shades throughout
LED recessed 12V lighting
Lights at entrance steps
Multiplex lighting
Slideouts controlled with remote and wall switch
Stackable washer and dryer
Ultraleather furniture package

STANDARD KITCHEN EQUIPMENT

Cutting board
Dishwasher drawer
Flush-mounted, electric 2-burner cooktop
Large deep drawer with waste basket
Porcelain tile backsplash with glass design inlays
Pullout cabinet extension with countertop
Samsung 1.7 cu. ft. convection microwave oven
Samsung residential 23 cu. ft. refrigerator with ice maker and water dispenser
Silverware drawer, divided for utensils
Solid surface countertops with stainless steel sink
Under-sink, sink cover storage compartment

STANDARD SAFETY EQUIPMENT

Carbon monoxide alarm
Deadbolt lock on entrance door
Egress window
Fire extinguisher
Lap safety belts in living area
Motion sensor security lights (2)
Security system with glass shatter sensors
Smoke alarm
Third brake light

OPTIONS

100" Sofa with ottoman, recliner and hide-a-bed (N/A 44DLQ, 44F, 42RBQ, 42DLQ, 44SL)
Canadian standards
Exterior freezer with slideout tray
Free-standing table with 4 chairs and hide-a-bed, sofa lounger curbside (N/A on 42DEQ and 44B)
Mobileye driving alert system
Premium entertainment system (mandatory option)
Solar panels (Dual-100 watt)
Winegard Trav'ler satellite dish with DIRECTV
Shaw Direct Canada Satellite TV
Vegatouch iPad control center

ASPIRE | DARE TO DREAM





FEATURES: Solid surface countertops with stainless steel sinks | Washer and dryer | Bose sound bar



FEATURES: Spacious bedroom with ceiling fan | Bathroom vanity area | King Sleep Number air mattress | Bathroom upright shower

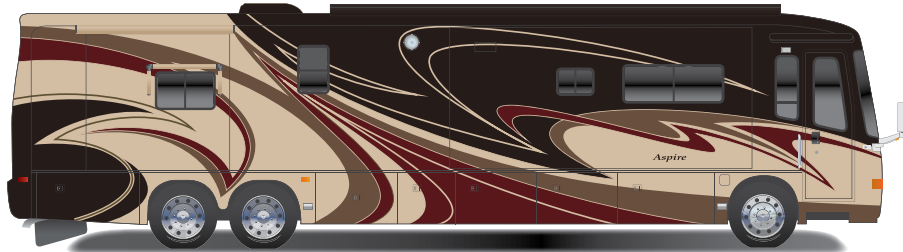


STYLISH. IN EVERY SENSE OF THE WORD.

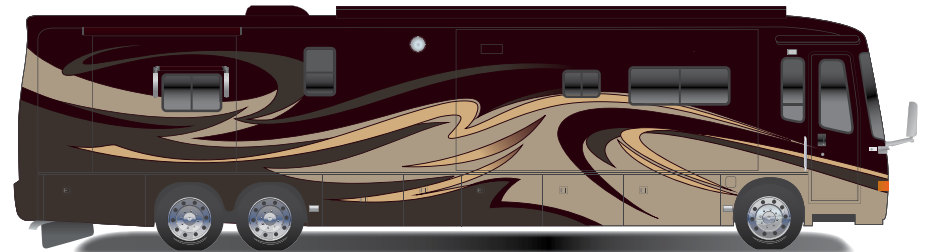


FEATURES: Driver area includes backup camera monitor and Sirius Satellite radio | Outside entertainment center | Lighted grab handle with keypad system | Multiplex lighting system | Central vacuum system

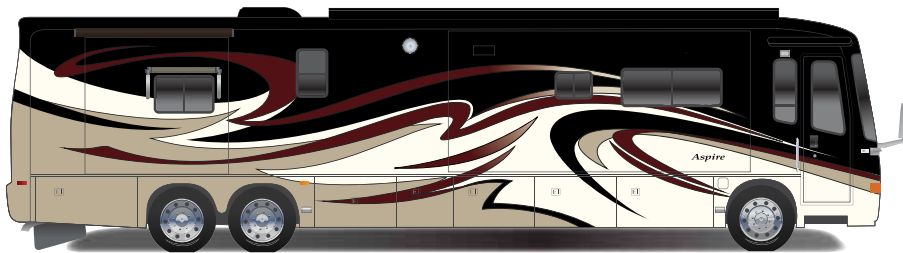
ASPIRE | PAINT PACKAGES | SPECIFICATIONS | FLOOR PLANS



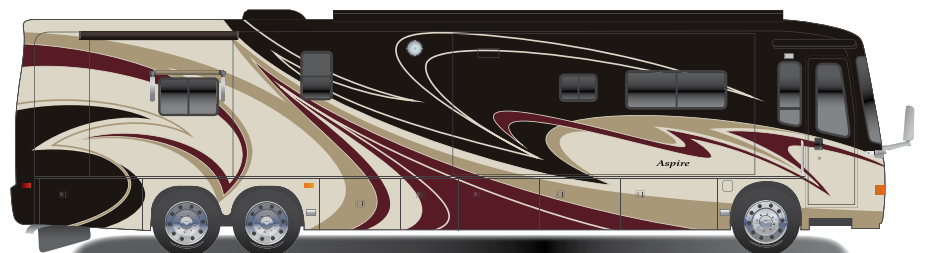
Autumn Berry



Golden Garnet

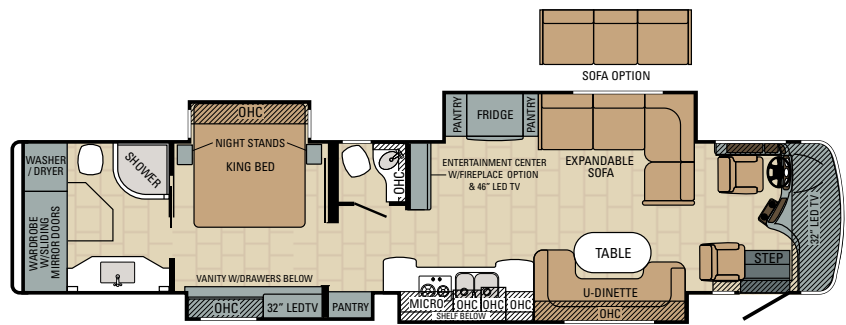
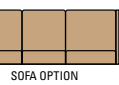
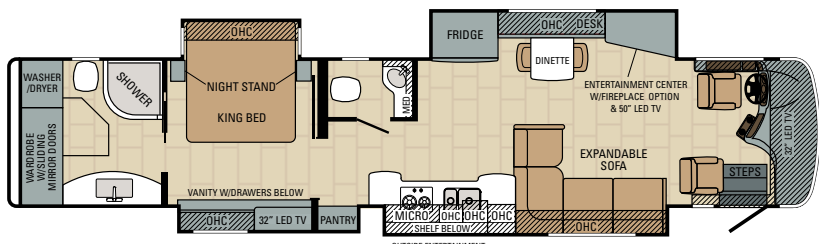
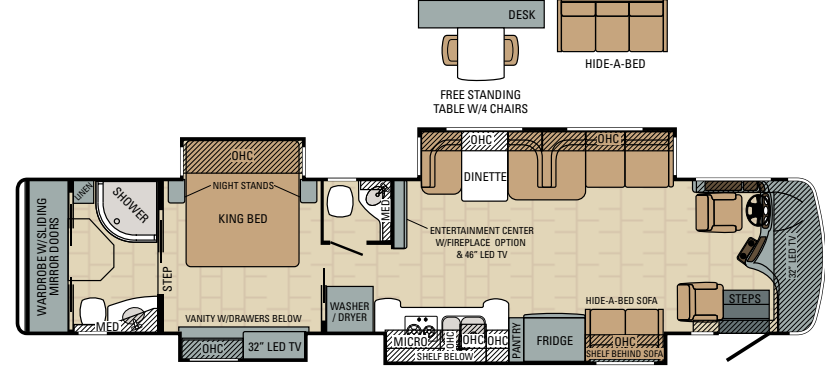
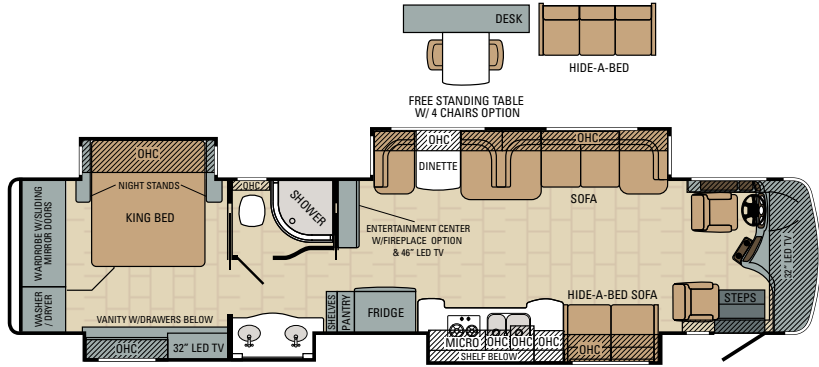
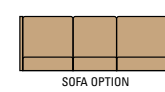
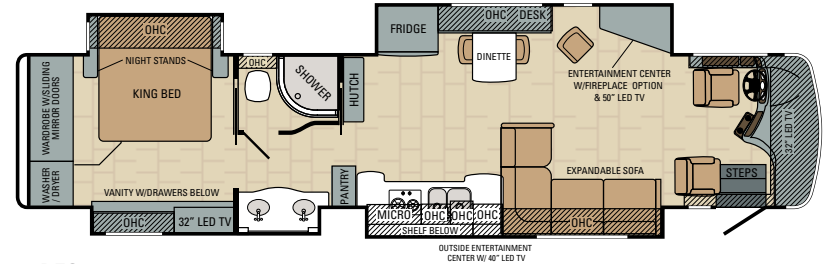
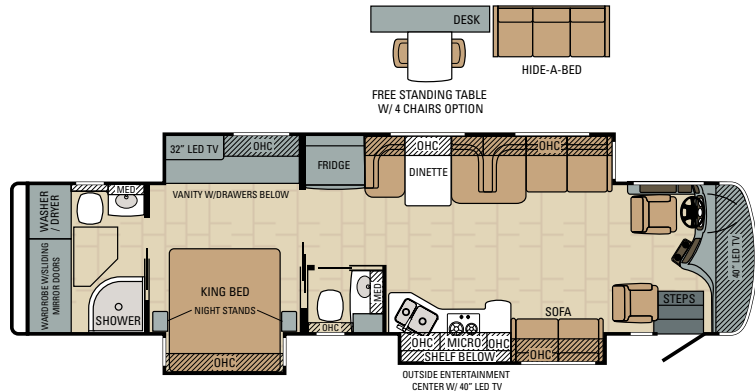


Black Pearl



Shimmering Cabernet

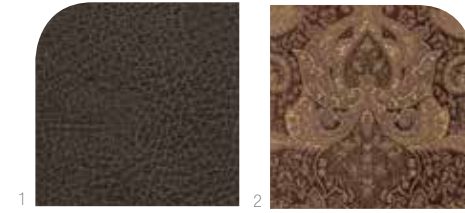
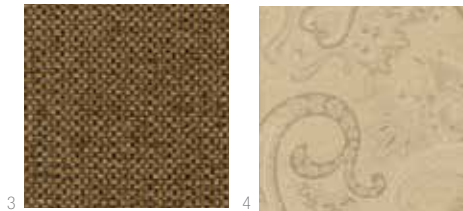
Floorplan	GWR (lbs)	GCWR (lbs)	Front GAWR (lbs)	Rear GAWR (lbs)	Tag GAWR (lbs)	Wheel Base	Overall Length	Exterior Height w/ A/C & Satellite	Exterior Width	Interior Height	Fresh Water Capacity (gal.)	Gray Waste Water Capacity (gal.)	Black Waste Water Capacity (gal.)
39E	38,600	53,600	14,600	24,000	N/A	261"	40' 6"	12' 9"	101"	84"	80	49.75	49.75
42DEQ	47,660	62,660	15,660	20,000	12,000	296"	43' 1"	12' 9"	101"	84"	80	49.75	49.75
42DLQ	47,660	62,660	15,660	20,000	12,000	296"	43' 1"	12' 9"	101"	84"	80	49.75	49.75
42RBQ	47,660	62,660	15,660	20,000	12,000	296"	43' 1"	12' 9"	101"	84"	80	49.75	49.75
44B	47,660	62,660	15,600	20,000	12,000	320"	44' 11"	12' 9"	101"	84"	80	49.75	49.75
44U	47,660	62,660	15,660	20,000	12,000	320"	44' 11"	12' 9"	101"	84"	80	49.75	49.75





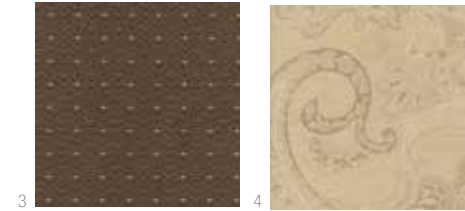
LATTE

1. **Sofa & Dinette**
Brisa Distressed Chamois
2. **Accent (pillow)**
Bradshaw Godiva
3. **Kitchen Chair**
Stimulus Stout
4. **Bedsread**
Candytuft Pearl
5. **Countertop**
LG Piza
6. **Tile**
Porcelain Del Nord Alaska



ESPRESSO

1. **Sofa & Dinette**
Brisa Distressed Steerhide
2. **Accent (pillow)**
Bernice Cocoa NR
3. **Kitchen Chair**
Elevations Truffle
4. **Bedsread**
Candytuft Pearl
5. **Countertop**
LG Piza
6. **Tile**
Porcelain Del Nord Alaska



CABERNET

1. **Sofa & Dinette**
Brisa Distressed Lasso
2. **Accent (pillow)**
Mimo Morocco
3. **Kitchen Chair**
Tippet Chocolate
4. **Bedsread**
Grove Wenge
5. **Countertop**
LG Piza
6. **Tile**
Porcelain Del Nord Alaska



WOOD

7. **Wood**
Windsor Glazed Cherry (a)
Tuscan Cherry (b)
Natural Cherry (c)
8. **Wood (bath)**
Caramel Glazed Maple



STANDARD BATHROOM EQUIPMENT

2-panel residential-style solid hardwood passage doors
One-piece radius fiberglass shower
Porcelain toilet
Power vent
Skylight in shower
Solid surface countertop(s) with integrated sink

STANDARD BEDROOM EQUIPMENT

Bose Solo sound bar
Ceiling fan (N/A 39E)
King Sleep Number air mattress
Remote secure coach locking system
Samsung 32" LED HD TV

STANDARD CHASSIS EQUIPMENT

(2) chassis batteries
100-gal. fuel tank (dual fill)
10-gal. DEF tank
15,000-lb. hitch with 7-pin plug
170-amp alternator
4.88 "Quiet Gear" rear axle ratio
50-degree turning radius
Allison 3000 MH 6-speed transmission
All-wheel ABS brakes
Bilstein shocks
Cummins ISL turbocharged 450 HP engine 1,250 lb.-ft. torque at 1,400 RPM
Engine block heater
Front axle I-beam 15,660-lb. wide track
Goodyear G670 295/80R 22.5 tires (front) and G670 275/80 R 22.5 tires (rear)
Raised rail chassis
Rear axle 20,000-lb., tag axle 12,000-lb.
Remote air connection
Side-mounted radiator
Spartan Mountain Master chassis
Tag axle auto weight release
Two-stage Jake brake

STANDARD CONSTRUCTION FEATURES

2" x 4" floor truss construction
2-1/2" wall with welded tubular construction
3/4" 7-ply plywood main floor decking
4-1/2" arched aluminum truss roof
Aluma-Tru Superstructure construction on 12"-16" centers
Electric-powered slideouts
Enclosed, insulated and heated floor and thermostat controlled heating in storage area
Frameless flush-mounted slideout rooms
Fully decked roof with 3/8" plywood
One-piece fiberglass roof
Polar Pack insulation with reflective Flexfoil: floor (R-33), roof (R-24), sidewalls (R-16), front and end caps (R-22)
Smooth high-gloss, gel-coat fiberglass exterior walls
Steel-reinforced front cap and windshield frame
X-Bridge frames welded into chassis frame

COCKPIT AMENITIES

12V auxiliary in-dash receptacle - (1) in center, (1) at driver's area, (1) at passenger's area
Adjustable foot pedals
Battery boost switch
CB prep antenna
Chassis battery disconnect
Color back-up camera and monitor

High gloss 12" x 24" porcelain tile with glass inlay
Hydraulic automatic leveling jack system
Powered flush stepwell cover
Powered front sun visors and privacy shade
Roller side sun visors and privacy shades
Samsung 32" LED HDTV
Side cameras with turn signals
Sirius radio and tuner
Spartan Message Center with LCD display featuring: odometer, tachometer, instantaneous fuel economy, fuel remaining, outside air temp., coolant temp., engine oil temp. and pressure, transmission temp., turbo boost pressure, air pressure, diagnostic functions, fault codes, service reminders, percentage of engine load, trip meter, speed and voltage
Touch-screen AM/FM/CD/DVD with Rand McNally GPS navigation, Bluetooth and 4 speakers
Ultraleather, power adjustable driver and passenger seats with integrated 3-point lap and shoulder safety belts
Ultra-Vision one-piece wrap-around tinted windshield
VIP SmartWheel steering wheel with integrated controls for cruise and wipers

STANDARD EXTERIOR EQUIPMENT

3M front protective film
Touch control for hydraulic automatic leveling jack system
Carefree power patio awning with LED lights
Carefree power entrance door awning with LED lights
Carefree slideout and window awnings
Chrome, heated, remote control, side-view mirrors
Daytime running lights
Docking lights
Electric-powered, double-step entrance
Exterior 40" Samsung LED HDTV with Sony Dual DIN CD/DVD player and 4 speakers
Exterior utility center, heated and enclosed with second system monitor panel
Fog lights
Frameless, dual-pane, tinted, safety-glass windows
Full-width rear mudflap
Keyless entry with key fob
Lighted heavy-duty grab handle with keypad system
Roof ladder
Slideout cargo tray
Sliding battery tray
Winegard in-motion dome satellite dish

HEAT, POWER AND WATER EQUIPMENT

15,000-BTU low profile central A/Cs (3) with heat pump, digital thermostat, Drain tubes (2 A/Cs 39E)
2,800-watt pure sine wave inverter with (4) 6V batteries
5-watt solar panel (for chassis batteries)
50-amp quick-connect power cord with electric reel
50-gal. propane gas tank
Aqua-Hot 400-LP hydronic water and heating system with in-floor heat throughout
Black holding tank sprayer
Energy Management System
Onan 10,000-watt diesel generator with auto gen start on slide-out tray
Power auto rewind water hose
SeeLevel™ tank monitoring system
Solar power prep
Total coach dual system water filter
Winterizing kit

STANDARD INTERIOR EQUIPMENT

Aire-Secure travel locks for passage doors
Samsung 46" LED HDTV (42DLQ, 42RBQ, 44U)
Samsung 50" LED HDTV (42DEQ, 44B)
Bose CineMate 1 SR digital home theater speaker system
Ball bearing drawer guides with full-drawer extension
Central vacuum system with vac pan
Day/night solar roller shades throughout
High gloss 12" x 24" porcelain tile floor with glass inserts
LED recessed 12V lighting package
Lights at entrance steps
Multiplex lighting
Power HDTV antenna with signal booster
Prep for satellite dish for roof
Slideouts controlled with remote and wall switch
Stackable washer and dryer
Ultraleather furniture

STANDARD KITCHEN EQUIPMENT

Cutting board
High gloss 12" x 24" porcelain tile with glass inserts
Large deep drawer with waste basket
Pullout cabinet extension with countertop
Recessed, glass top gas range
Samsung 1.7 cu. ft. convection microwave oven
Samsung residential 23 cu. ft. refrigerator with ice maker and water dispenser
Silverware drawer, divided for utensils
Solid surface countertops with stainless steel sink

STANDARD SAFETY EQUIPMENT

Carbon monoxide detector
Deadbolt lock on entrance door
Egress window
Fire extinguisher
Lap safety belts in living area
Motion sensor security lights (2)
Propane alarm
Security system
Smoke alarm
Third brake light

OPTIONS

100" sofa with ottoman recliner and hide-a-bed (N/A 39E, 42RBQ 42DLQ)
Canadian standards
Fireplace
Free-standing table with 4 chairs and hide-a-bed, sofa lounge curb side (N/A 42DEQ, 44B and 44U)
Premium entertainment system (mandatory option)
Shaw Direct Canada Satellite TV
Winegard Trav'ler satellite dish with DIRECTV



REDEFINING THE STANDARD.

1. **Spartan Chassis.** The industry's premier foundation.
2. **Exclusive X-Bridge™ Frame.** It's what we do with that chassis that sets us apart. We build on Entegra's exclusive X-Bridge™ frame to give our foundation even more rigidity, meaning your suspension – and not the chassis – weathers every pothole.
3. **Enhanced Visibility.** Thanks to a shallower dashboard design.
4. **Superior Maneuverability.** By positioning the cab over the tires, Entegra Coach has unsurpassed maneuverability.
5. **Ultra-Vision Windshield.** This one-piece, wrap-around windshield features a reinforced cap and frame engineered to provide optimal strength where you need it most.
6. **Wood Sub-Flooring.** Boasting one of the industry's thickest floors, Entegra Coach utilizes wood, a material that doesn't transmit energy and minimizes road noise and vibrations.
7. **Tile Around Cabinetry.** While other manufacturers place cabinets on top of tile, which can lead to squeaks or even cracking, we lay porcelain tiles around our cabinets so they can be screwed directly to the wood floor.
8. **Batting Insulation.** Our walls, along with our front and rear caps, feature tucked-and-glued batting insulation, the same kind of fiberglass insulation found in sound-absorbing theater rooms.
9. **Vinyl Padded Ceilings** also help absorb sound.
10. **Sur-seal Entry Door Lock** features a complete-seal mechanism to prevent whistling.
11. **Wood and Steel Construction.** 2x4 wood floor construction placed on a steel sub-structure with fiberglass batting insulation work together to absorb sound and vibrations.
12. **Commercial-Grade Plywood.** 3/4" plywood floor is screwed and glued down using 23 2" screws at each seam. An uncompromising technique that outlasts standard tongue-and-groove construction.
13. **Aluma-Tru™ Superstructure.** The framework of our walls is spaced 16" or less apart, giving Entegra more weight-bearing aluminum in its walls than any other coach. Combined with Flexfoil, 1/2" foam and fiberglass, our walls have an R-16 insulation value.
14. **Plywood Walls.** Our interior wall board is backed by 1/2" plywood construction.
15. **Roof.** Entegra's roof combines crowned aluminum truss rafters on 16" centers with Flexfoil, fiberglass insulation and 3/8" plywood decking to complete our unwavering design.

ENTEGR A COACH

Like a fine home, quality begins with the foundation. That's why we start with the Spartan chassis, then add our exclusive, rigid X-Bridge™ frame to strengthen overall flexibility. Minimizing stress in this way reduces windshield movement and noise plus it diminishes the potential for cracks. The ability to absorb vibrations during travel is further enhanced by our unique wood floor construction which features insulation and 3/4-inch marine-grade plywood.

Continuing our commitment to quality, Entegra Coach employs a proprietary hung wall structure built on 2"x3" aluminum studs on 16-inch centers. Key openings like windows, doors and slide-outs are reinforced with additional studs.

Wallboard and Polystyrene is glued to the inside of the wall, followed by a layer of Astrofoil insulation and residential grade batting insulation. Walls are then finished off with a solid piece of fiberglass. When wall construction is complete, there are no gaps and the result is an incredibly sound-proof coach.

Our attention to detail knows no bounds — from the ground up, inside and out. We take great pride in the craftsmanship mechanically and aesthetically, using only materials worthy of our name and standards including Amish hand-crafted cabinetry for the best look and longevity in the industry.



ENTEGR A
COACH®

A GAME CHANGER FROM THE GROUND UP

Special Features

- Flush-mounted slide-outs for better aerodynamics and more curb appeal
- Frameless dual-paned windows
- Integrated driver and passenger seat belts attached to the ultra comfortable chairs, not the wall
- Passage door locks which engage automatically when the parking brake is released
- Keyless entry pad for added security and convenience
- A sure seal front door to virtually eliminate wind noise
- Courtesy lights for ease of entry in the dark

Built on the Bontrager Family Promise

Entegra Coach is owned and operated by the largest privately-owned RV manufacturer in the world, with nearly 50 years of experience in the industry. Why is that important? Because a family business puts its name on the line every time a customer makes a purchase. We understand that quality, integrity, and delivering on every promise is vital to success.

In that same spirit of family, we make a pledge to all of our customers. We call it the Bontrager Family Promise. It is based on the five principles upon which we have built our business: honesty, reliability, thoroughness, accessibility and responsiveness. We promise to try to do what's best for you, our customer. At all times. Without compromise.

That's our commitment to you. And to back it up, you should know that we have the best warranties in the business, including a two-year warranty, a five-year structural warranty and three years of CoachNet Platinum level emergency road service. To learn more visit EntegraCoach.com.

Entegra Coach Warranty

Our family is proud to stand behind every Entegra Coach we build. Our commitment is to provide the highest level of products and services possible. We invite you to compare our warranty with other manufacturers – we think you'll find that your satisfaction is our lifelong passion.

The Entegra Coach ("Entegra") warranty covers this recreational vehicle ("RV"),

- When used only for its intended purpose of recreational travel and camping.
- For two (2) years, or the first twenty-four thousand (24,000) miles of use, whichever occurs first.
- In addition, it covers the structural integrity (defined as something essential to the manner of construction during the assembly process covering the sidewall framing, roof framing and floor framing) for five (5) years.
- It covers RV's sold in the United States, U.S. Territories and Canada only.
- The warranty periods begin on the date that the RV is delivered to the first retail purchaser by an independent, authorized dealer of Entegra; or, if the dealer places the vehicle in service prior to retail sale, on the date the RV is first placed in such service.
- In the event that a substantial defect in material or workmanship, attributable to Entegra, is found to exist during the warranty periods, it will be repaired or replaced, at Entegra's option, without charge to the RV owner, in accordance with the terms, conditions and limitations of this limited warranty.

For a copy of the published limited warranty with full terms and conditions, please contact your local Entegra Coach dealer.

Roadside Assistance

We promise peace of mind in countless ways with the Entegra Coach Customer First Roadside Assistance program, yours at no cost during your first three years of ownership. Offered through CoachNet, the country's largest RV emergency road service, this program gives you immediate access to dependable roadside assistance and support services with a simple phone call.

- 24/7 technical support and assistance technicians
- Service appointment assistance
- Mobile mechanic
- Emergency road towing and winching
- Delivery of emergency fluids
- Flat tire service
- Jump start/battery boost
- Lockout service



ENTEGR A
COACH®

Entegra Coach, Inc.
P.O. Box 460, Middlebury, IN 46540
EntegraCoach.com

See dealer for further information and pricing. All information in this brochure is the latest available at the time of publication. Entegra Coach reserves the right to make changes and to discontinue models without notice or obligation. Photos in this brochure may show optional equipment and props for photography purposes only. Video screens and monitors are simulated. RVs built for sale in Canada may differ to conform to Canadian Codes. ©2014 Entegra Coach, Inc. 30K Printed in U.S.A. 8/14.

Gross Vehicle Weight Rating (GVWR): The maximum permissible weight of the motor coach, including the Unloaded Vehicle Weight (UVW) plus passengers, personal items, all cargo, fluids, options, and dealer-installed accessories. The GVWR is equal to or greater than the sum of the UVW and the Cargo Carrying Capacity. Gross Axle Weight Rating (GAWR): The maximum allowable weight each axle assembly is designed to carry, as measured at the tires, therefore including the weight of the axle assembly itself. Gross Combined Weight Rating (GCWR): The maximum allowable combined weight of the motor coach used as a tow vehicle and the attached towed vehicle.