

AVALANCHE

AVALANCHE
By Keystone



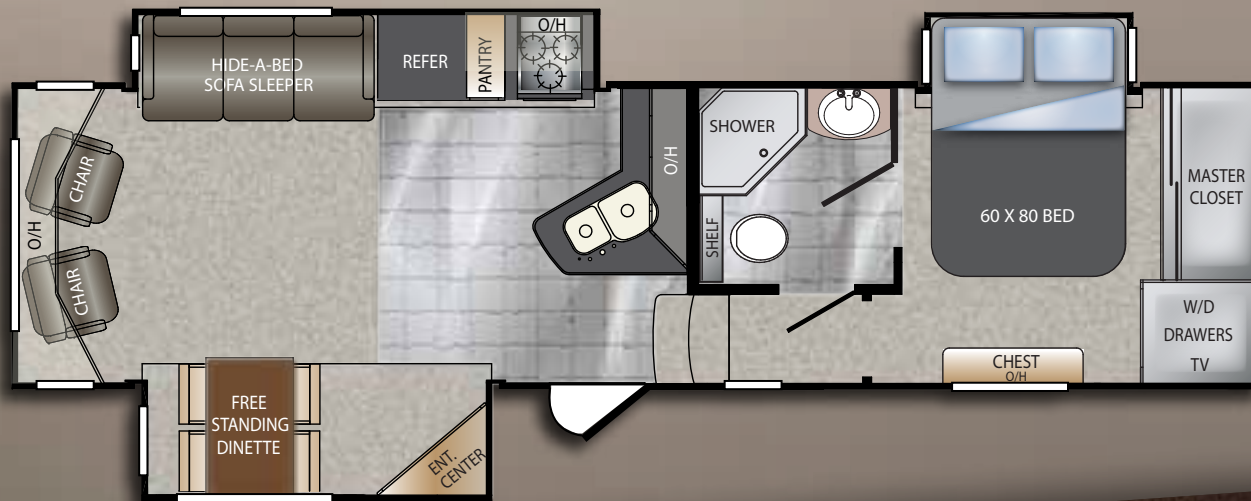
the **PEAK OF COMFORT** and **VALUE**

www.Keystone-Avalanche.com



295RL

AVALANCHE
BY AVALANCHE



Model	295RL
Shipping Weight	10330
Carrying Capacity	3170
Hitch	2220
Length	33' 11"
Height	12' 11"
Fresh Water	66
Waste Water	50
Gray Water	85
LPG	60

AVALANCHE

295RL

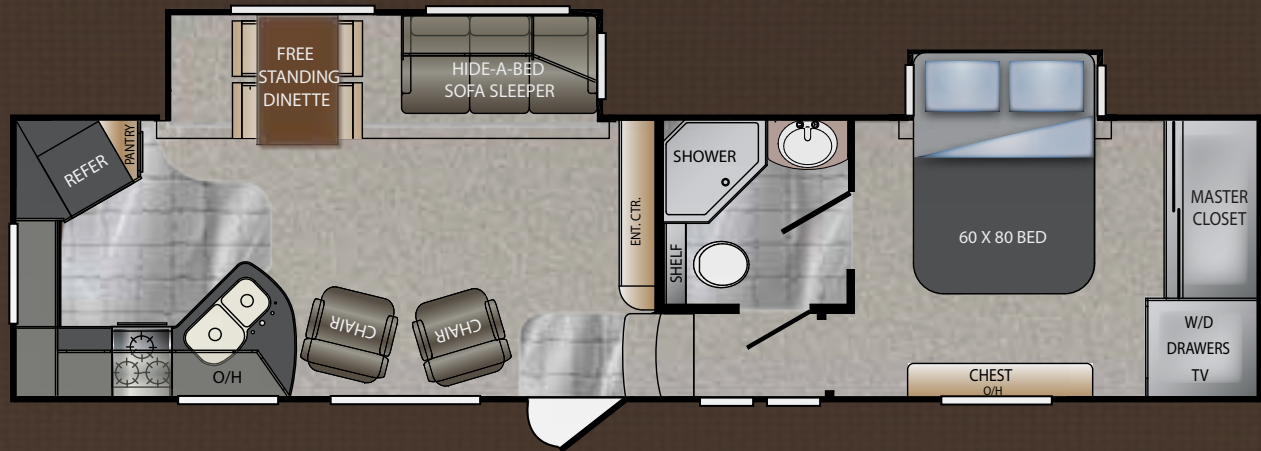
Enjoy viewing the beautiful fireplace and entertainment center with LCD flat screen TV in the Avalanche 295 from virtually all seating. While this coach is the smallest model in the Avalanche series at under 34', it feels much roomier and spacious due to the wide open living area. The elegant kitchen is highlighted by solid surface counter tops, under mount stainless steel sink and glass overhead cabinets as well as a built-in pantry cabinet. The master suite features a queen sized bed, abundant cabinet storage and large closet with mirrored wardrobe doors.

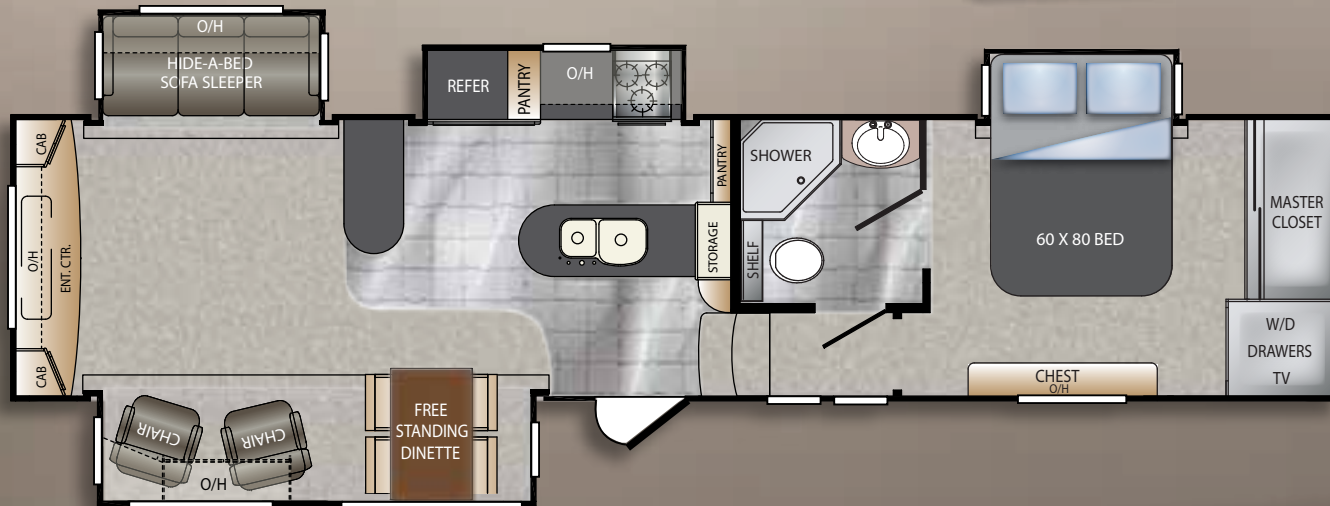
AVALANCHE

320RK

If kitchen counter space and storage are high on your list, then the Avalanche 320RK is just right for you! Huge windows in the kitchen, dining and living areas offer exception views from anywhere in your coach. The large living area also features a hardwood Entertainment Center with numerous built-in cabinets. The private bath has access from both the hallway and the master bedroom and features a corner shower with seat and large vanity.

Model	320RK
Shipping Weight	10447
Carrying Capacity	3553
Hitch	2360
Length	36' 4"
Height	12' 11"
Fresh Water	66
Waste Water	50
Gray Water	85
LPG	60





Model	330RE
Shipping Weight	11723
Carrying Capacity	2577
Hitch	2300
Length	38' 4"
Height	12' 11"
Fresh Water	66
Waste Water	50
Gray Water	85
LPG	60

AVALANCHE

330RE

Wow your friends with the huge Entertainment Center with fireplace and retractable LCD flat screen TV. When the TV is stored, enjoy the views from the enormous picture window in the rear of the spacious living area. Every seat in the house has a picture perfect view.

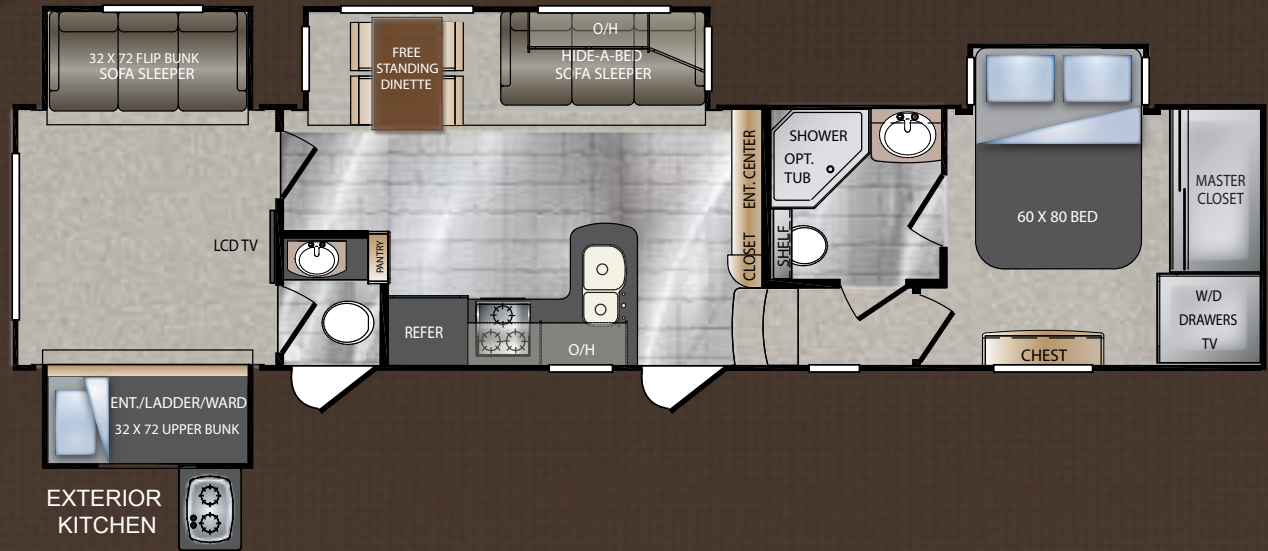
The Avalanche 330RE also features loads of cabinets and counter space as well as a hidden trash container cabinet. This is a great kitchen for cooking and entertaining. The master bedroom has additional built-in storage cabinets for all your belongings.

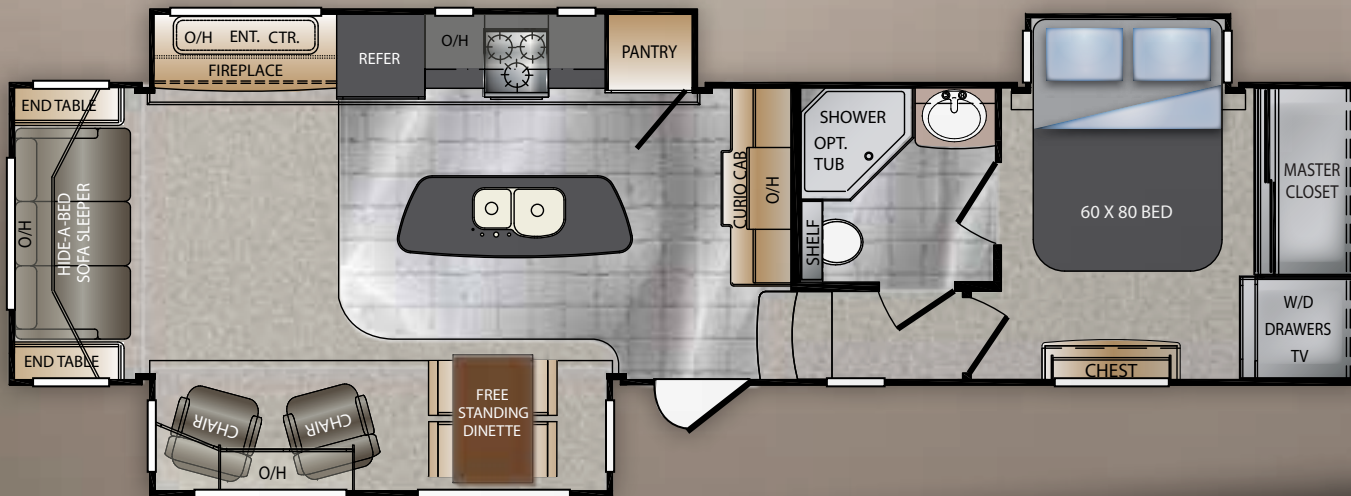
AVALANCHE

341TG

Do a lot of "Couple Camping"? Need a separate space for the kids? This is the model for you. The Avalanche 341TG boasts a private rear suite with separate exterior entrance and half bath. You can sleep up to four people comfortably in the rear quarters. In addition, the sofa in the living area converts to a queen sleeper, so bring all the friends along! Keep the activities outside with the exterior kitchen which features a cooktop, refrigerator, LCD flat screen TV and built-in cabinetry. Huge storage bays under the coach and in the bulkhead will allow you to carry everyone's gear!

Model	341TG
Shipping Weight	12195
Carrying Capacity	2080
Hitch	2275
Length	38' 7"
Height	12' 11"
Fresh Water	66
Waste Water	85
Gray Water	85
LPG	60





Model	343RS
Shipping Weight	11405
Carrying Capacity	2715
Hitch	2140
Length	36' 11"
Height	12' 11"
Fresh Water	66
Waste Water	50
Gray Water	85
LPG	60

AVALANCHE

343RS

Experience the residential feel of the kitchen with walk around island and huge built-in pantry with pull out shelves and glass overhead cabinets. Notice the solid surface countertops and under mount stainless steel sink in the island as well as the numerous beautiful cherry hardwood cabinets for storage. End tables at each side of the sofa add storage as well as a place to set things.

AVALANCHE

345TG

The Avalanche 345TG is great for entertaining – both indoors and outside. The exterior kitchen features a drop-down cooktop, LCD flat screen TV, refrigerator, and plenty of storage. Inside you'll enjoy the huge entertainment center with 40" LCD TV and abundant beautiful cherry hardwood cabinets, matching recliners and a sofa sleeper. The elegant reverse aisle steps up to a private bath and master suite which features a corner built-in desk area as well as numerous cabinetry.

Model	345TG
Shipping Weight	11421
Carrying Capacity	2719
Hitch	2140
Length	37' 11"
Height	12' 5"
Fresh Water	66
Waste Water	50
Gray Water	85
LPG	60



ZERO DEGREE RATED

With an impressive list of industry-leading construction advancements, Avalanche sets the bar for four season living.



WALL CONSTRUCTION (R-10)

1. Class A style "slam" baggage doors
2. Dual 1/8" luan backers with staggered seams
3. High density block foam insulation
4. Radius window corner blocks for additional integrity
5. 2" Welded aluminum sidewall studs
6. Fiberglass batten insulation
7. Molded fiberglass cap with 4mm coated graphics
8. Metal backing strips for added support
9. Cambered steel cap backing for increased turning radius - "Max Turn"

ROOF CONSTRUCTION (R-28)*

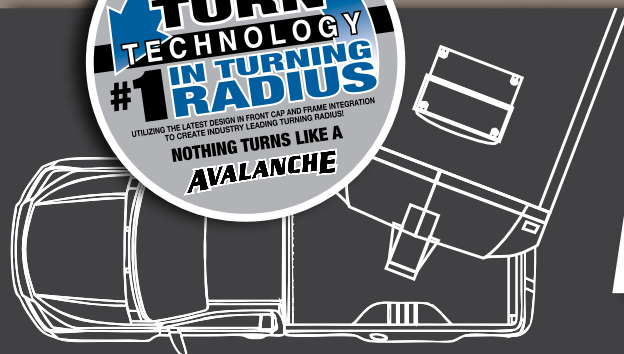
10. Aluminum radius roof corner molding wrap
11. One-piece EPDM roof with 12-year warranty
12. 3/8" Fully walkable roof decking
13. Thermo-Foil insulation
14. Fiberglass batten insulation
15. 1/8" Ceiling Luan with vinyl protection

FLOOR CONSTRUCTION (R-40)*

16. Residential grade high density carpet with stain protection
17. Residential grade carpet padding
18. Floor wrap, wood backing, aluminum structure, high density block foam, and Astro-Foil insulation, thermo-insulation
19. Therma-Shield holding tank insulation featuring: One piece fluted polypropylene fully enclosed subfloor, fiberglass batten insulation, and ducted heat

TIRES AND CHASSIS

20. 10" steel "powder coated" I-beams
21. 16" E-Load radial tires
22. E-Z Lube 8 lug, 6,000lb axles
23. E-Z Flex suspension with steel shackles and greasable brass bushings



MAX TURN TECHNOLOGY

The latest in integrated frame and front cap design allows for an industry best 79° Truck to Fifth-Wheel angle. What does that mean?

That means that with MAX-TURN TECHNOLOGY backing into even the tightest of campsites is made simple. No other frame/cap design in the industry can offer this much maneuverability! With a conventional RV frame it can be difficult to make those tight right hand turns. With MAX-TURN TECHNOLOGY, making 90° turns is never a problem. This design by Keystone not only offers un-matched turning capabilities but also uses a one piece frame design. The one-piece front rail design maximizes strength while increasing maneuverability.

INTERIOR *Decor*



EBONY VINE



SILVER LEAF



FRENCH ROAST

EXTERIOR *Features*



THERMA SHIELD³⁷
INDUSTRY LEADING R-37 HOLDING TANK ENCLOSURE

-4° Outside



72° Inside

COMFORT INDOORS

With an impressive list of industry-leading construction advancements, Avalanche sets the bar for four season living. But don't just take our word for it — look at these official test results from a world leader in heating and cooling technology — Dometic Corporation. Subjected to below zero temperatures inside their legendary test chamber, the following temperatures were recorded inside an Avalanche with the thermostat set at 74°;

Living room	72°
Bedroom	70°
Bathroom	75°
Pass-Thru/Utility Center.....	58°*

Of course, inside temperatures are only part of the story. With our industry leading “Therma-Shield 37” package, all the holding tanks and dump valves remained completely operational on our test unit with recorded temperatures consistently above 50° in these critical areas. Not everyone needs this kind of protection, but when four season comfort becomes important, make sure you demand the very best... demand an Avalanche!

*Testing was done in a controlled independent environment.



A



B



C



D



E



F



G

A. Storage compartments are easy to access in the Avalanche thanks to the motorhome style **“SLAM” BAGGAGE DOORS**. These compartment doors feature easy opening pad handles with locks for added security of your stored valuables. Oversized struts on each side of the compartment door immediately raise and support the door up high and out of the way, so you don't have to fumble with awkward latches behind the doors to hold them up.

B. The Avalanche uses the slide out technology you see on million dollar motor coaches. These **HYDRAULIC SLIDES** quietly move in and out much faster and smoother than cable slides. Above the hydraulic slide out motor mechanism, you'll see designated, easy-to-operate selector valves that allow you to move individual slideouts in or out if need be.

C. The price point's largest and most durable frame features 10" powder coated steel frame rails on all floorplans. In

addition, 6,000lb axles equalized with the upgraded **E-Z FLEX SUSPENSION** virtually eliminates damage from vibration caused by road bumps, holes, and cracks to give you a safe and comfortable towing experience. This system tested out significantly better than competing brands by Roush Racing, a third party testing company.

D. One look at the Avalanche's **BASEMENT STORAGE** tells the story - the Avalanche boasts massive pass-through storage at over 145 cu ft! Plus, you won't have to worry about your possessions sliding around as we've used non-skid rubber diamond plate flooring that isn't slippery like felt carpet lining.

E. The Avalanche **EXTERIOR KITCHEN**, featured in the 341TG and 345TG, is a hit at the game or at the campground. With a flip-down LP grill, a refrigerator, abundant storage space and even an LCD TV, you're sure to spend more time grilling out than eating in!

F. Set-up and pack-up is quick and easy in an Avalanche. One reason is the **POWER FRONT AND REAR STABILIZER JACKS**, with easily accessible controls. You'll also notice that the Avalanche jacks are placed outside of the main frame rails, for a wider, more sturdy base.

G. The Avalanche's **FULLY ENCLOSED AND HEATED “WATER WORKS”** compartment houses your dump valves, low point drains, exterior shower, black tank flush hookup, quick winterization kit and city water hookups.

STANDARDS & Options

EXTERIOR FEATURES

- “No Sweat” vented attic system
- 16” E-load radial tires w/ 8 wheel lugs
- Heavy duty 6,000lb axles
- Easy lube axles
- 10” Beams with Z-frame technology
- 50AMP service w/ detachable power cord
- Hydraulic selector valves for slideouts
- Power front landing jacks
- Gutters w/ rain spouts
- Rear Ladder
- One-Touch electric awning package w/ adjustable arms
- Tinted 80% safety-glass windows
- Electric rear jacks
- Class “A” style dual latch “slam” baggage doors
- Super-size 6’4” tall, 30” wide entry door
- Deluxe Graphics package
- One piece polypropylene underbelly
- Triple insulated, ducted and heated holding tanks

MAX TURN HIGH-GLOSS FIBERGLASS FRONT CAP & REAR

- 30% better turning radius
- Aerodynamic design w/ 18% better drag efficiency
- Hitch Assist back up mirror w/ lights

ALL-IN-ONE “WATERWORKS” EXTERIOR UTILITY CENTER

- Easy siphon winterization system
- Water heater bypass
- Enclosed low point drain valves
- Ducted heat for cold weather protection
- Dump valves
- 110V outlet
- Black tank spray hookup

SUSPENSION

- Improved impact absorption
- Improved axle equalization
- Greasable “wet” bolts
- Long lasting 1/2” steel shackle plates
- Long lasting bronze bushings

INTERIOR FEATURES

- Heavy duty residential ball bearing drawer guides
- Extra deep, fully extendable drawers
- Solid Surface Countertops
- Solid Surface sink cover
- Stainless steel extra deep sink with dual bowls
- High rise, single lever kitchen faucet

- Maximized kitchen storage w/ more drawers and pantry space
- “Sleep & Store” upgraded sofa and air mattress in living room
- 4 high back dinette chairs with built in storage
- Residential dinette w/ wide base, hidden leaf, and center storage
- Extra tall 6’5” main slide height
- Day/night shades
- Ceiling fan with upgraded lighting fixtures
- Telephone jack
- LP leak detector
- “One Place Command Center” centrally located operational switches & gauges
- Translucent glass shower door & enclosure
- Hand held massaging shower head
- Skylight over shower
- Porcelain toilet
- Single level master bedroom suite
- Residential 60” x 80” queen bed
- Designer headboard
- Cross ventilation bedroom windows where available
- Quilted bedspread and pillows

UPGRADED APPLIANCE PACKAGE

- High output range w/ 22” oven
- 12 Gallon DSI 2-way water heater
- 35,000 BTU furnace

SUPER CINEMA PACKAGE

- Huge LCD TV
- 12V AM/FM/CD/DVD home theater system w/surround sound effect speakers
- DVD player
- Digital TV antenna w/ built in booster
- Dual cable & satellite hookups

BASE CAMP COLLECTION

- Solid cherry cabinet doors, drawers, and hardwood fascia
- “Sleep & Store” upgraded sofa and air mattress in living room
- Solid Surface kitchen countertops and flush mounted sink covers
- Wire and brace for second A/C in bedroom
- LCD TV in living room
- Washer and dryer prep
- 50 AMP service

WHITEOUT PACKAGE

- Therma-Shield R37 tank wrap
- Drop frame technology
- Class A bus-style latch “slam” baggage doors
- Electric front and rear jacks
- Aluminum wheels

INTERIOR FEATURE OPTIONS

- Electric Fireplace
- LCD Bedroom TV
- RVIA Seal
- Fantastic Fan (kitchen)
- Dual Pane Windows
- Winterization
- Generator Prep
- Booth Dinette
- Go RV MEP Seal
- Dual A/C Package
- Canadian Compliance

Your Local Dealer

It’s up to you where you purchase your new Avalanche, but may we suggest your local dealer? Not only does it help your local economy and provide jobs, but it will also give you an opportunity to develop a service relationship with someone that will come to know you and your coach. Congratulations on finding the best built, best equipped, best value in the industry, and happy travels!



AVALANCHE

www.Keystone-Avalanche.com

2642 Hackberry Drive | PO Box 2000 | Goshen, IN 46527-2000 | (574) 535-2100

Product information is as accurate as possible as of the date of publication of this brochure. Features, floor plans, and specifications are subject to change without notice. Please also consult Keystone’s web site at www.keystonerv.com for more current product information and specifications. **Tow Vehicle Disclaimer. CAUTION:** Owners of Keystone recreational vehicles are solely responsible for the selection and proper use of tow vehicles. All customers should consult with a motor vehicle manufacturer or their dealer concerning the purchase and use of suitable tow vehicles for Keystone products. Keystone disclaims any liability or damages suffered as a result of the selection, operation, use or misuse of a tow vehicle. **KEYSTONE’S LIMITED WARRANTY DOES NOT COVER DAMAGE TO THE RECREATIONAL VEHICLE OR THE TOW VEHICLE AS A RESULT OF THE SELECTION, OPERATION, USE OR MISUSE OF THE TOW VEHICLE.**



Keystone RV Company
www.KeystoneRV.com