



# FULLHOUSE

2024

Room for  
adventure.



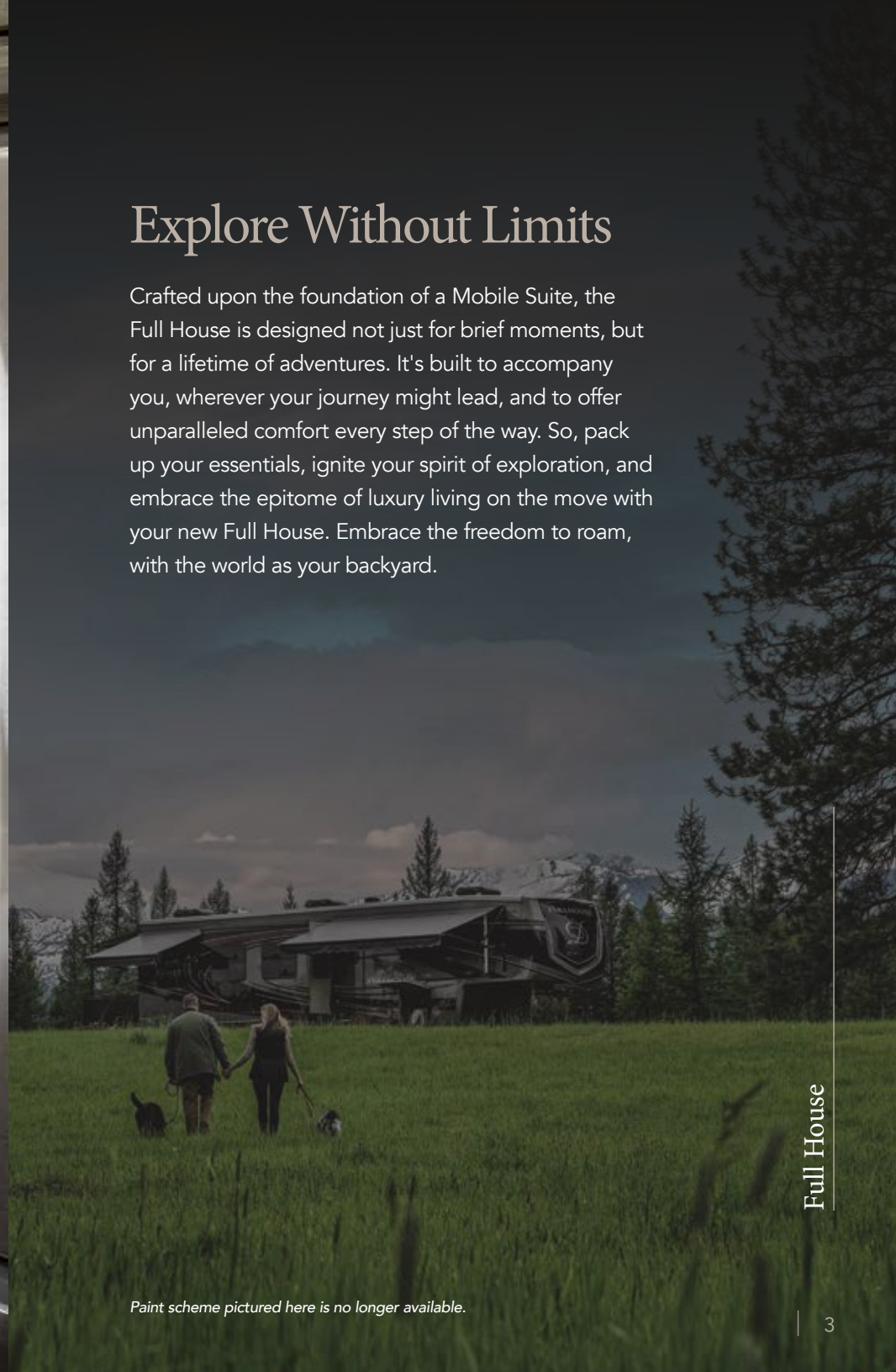




JX450 - Toffee Grove Cabinets  
with Invoke Décor

## Explore Without Limits

Crafted upon the foundation of a Mobile Suite, the Full House is designed not just for brief moments, but for a lifetime of adventures. It's built to accompany you, wherever your journey might lead, and to offer unparalleled comfort every step of the way. So, pack up your essentials, ignite your spirit of exploration, and embrace the epitome of luxury living on the move with your new Full House. Embrace the freedom to roam, with the world as your backyard.



*Paint scheme pictured here is no longer available.*



Mystic Reserve



## Full House

JX450

### Luxury from the word go.

The JX450 proudly features a fully-equipped residential kitchen that spares no detail, offering ample storage, elegant solid surface countertops, a complete dinette set, luxurious theater seating, and a 55" TV at the heart of its entertainment center.

Understanding that full-time living demands amenities often overlooked by typical toy haulers, we've meticulously designed each floor plan to include a generously-sized kitchen with high-quality residential appliances and practical storage solutions, ensuring your living space is both comfortable and functional.







LX455 - Italian White Cabinets  
with Invoke Décor  
and Nutmeg Furniture

## The Foundation of Luxury.

The LX455 unveils a spacious 12-foot garage, designed to house your larger toys while still offering the luxuries needed for full-time living. With a fully finished, climate-controlled garage, you're presented with an expansive, versatile space that's ready to adapt to your lifestyle. Whether it's accommodating your adventure gear, transforming into a home office, creating a bunkroom for the kids, or simply providing that extra room you've always needed, the Full House ensures your needs for additional space are met with style and efficiency.

Glacier Bay



Full House





## Full House

LX455

# Foundation of Luxury.

The LX455 takes luxury to the next level with its fully equipped residential kitchen and expansive entertainment center, complemented by extra-long theater seating that welcomes guests in comfort. The hallmark master suite of DRV is prominently situated in the upper deck, offering a king-sized bed, ample overhead storage, and a vanity slide for added mobility and space. Accessibility is thoughtfully designed, with a spacious bathroom just a step away from the entry door. Laundry conveniences are cleverly placed near the entrance, ensuring laundry is kept out of the garage and within easy reach. Every Full House model boasts a vanity slide as a standard feature, enhancing the space around the bed for a more open feel. The master suite shines with exceptional storage solutions, including a walk-in closet and extensive under-bed storage, ensuring that every need is not just met but anticipated.





Regal Heights



## Full House

---

### GARAGE FEATURES

## Luxury asset hauler.

The Full House takes the typical toy hauler garage to the next level. Every model comes standard with custom metal cabinetry, a 50" TV, a portable metal folding table, and diamond plate wallbase throughout.

The optional patio enclosure with steps is a popular choice. You can also add electric drop down beds, jack knife sofas, and a three season patio door enclosure.







MX450 - Italian White Cabinets  
with Invoke Décor  
and Nutmeg Furniture

## 13-foot garage

The MX450 is a first-of-its-kind 13-foot garage, offering ample room for larger recreational vehicles while maintaining all the amenities necessary for full-time living. This fully finished, climate-controlled garage provides an expansive, versatile area ready to be tailored to your lifestyle. Whether you're storing toys, setting up a home office, creating a bunkroom for the kids, or simply in need of extra space, the Full House is designed to accommodate your every requirement.





## Full House

MX450

# Designed to impress.

The MX450 is designed to impress with a residential-style kitchen, an expansive entertainment center flanked by opposing theater seating and a cozy love seat to welcome guests. The hallmark DRV master suite occupies the upper deck, offering a king-sized bed with ample overhead storage and a vanity slide for additional space. Additionally, a spacious bathroom is conveniently accessible from the main entry, complete with washer and dryer connections, ensuring laundry can be managed with ease and away from the garage area.



# Floor Plans

- Fresh Tank - 100 gal.
- Gray Tank - 75 gal.
- Black Tank - 50 gal.
- On Demand Hot Water Heater
- Automotive Disc Brakes
- 17 1/2" H-Rated Tires
- 8,000 lb. Rated Axles (triple axle models)

JX450



10' Garage  
46' 0" Length  
20,310 UVW  
24,000 GVWR

LX455



12' Garage  
46' 0" Length  
19,680 UVW  
24,000 GVWR

MX450



13' Garage  
46' 0" Length  
20,310 UVW  
24,000 GVWR

Note: All lengths are measured from the pin box to the rear cap. All dry weights are estimates depending on options.



Glacier Bay Partial Body Paint (Standard)



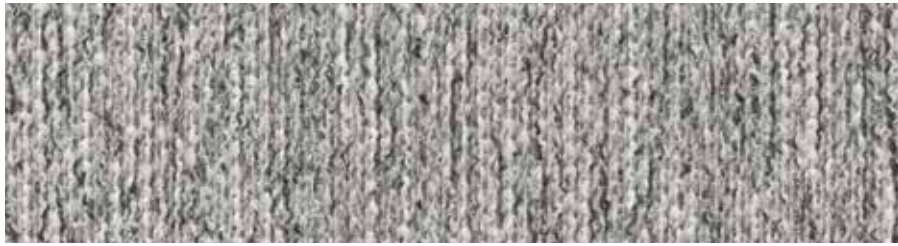
Mystic Reserve Partial Body Paint (Standard)



Regal Heights Partial Body Paint (Standard)

All models feature





Invoke Dinette Chairs



FULLHOUSE



Chai Hickory Cabinets



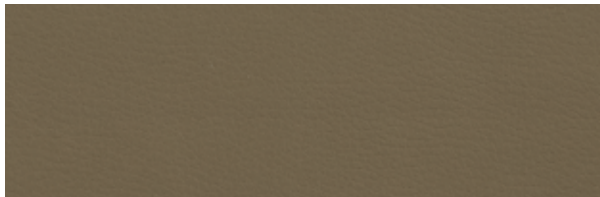
Italian White Cabinets



Toffee Grove Cabinets



Aurora Ramo Countertops



Nutmeg Sofas



Pewter Sofas



Sand Sofas



Strata Flooring



Willow Flooring



Virtual Gloss Carpet

## The foundation of true freedom.

If there's one thing we've learned after all these years on the road, it's this: People choose DRV Luxury Suites because they're ready to *enjoy* life. They don't want to spend their time worrying about things like quality, construction and service. Which is why we put so much thought into them in the first place. Every DRV product is built to *last* — with our unique triple-stacked box tube frame, the thickest sidewalls in the industry, screwed and glued aluminum framing for unshakable stability, and dozens of no-excuses features that'll keep you safe, comfortable and worry-free, even when Mother Nature's at her worst.

At DRV Luxury Suites, we build each fifth wheel the same way we'd build our own home. And we appoint it with the finest luxury features available — lush homelike furnishings, fireplaces, large French door refrigerators, stainless steel appliances, top-of-the-line electronics and more. Then we back it up with the best quality control and customer service in the industry. Every single coach is tested before it ever leaves the factory. And, if you should someday have a problem, rest assured, we'll get it fixed. No matter where you are. Day or night.

## Technology

**State-of-the-art Level-Up™ leveling system and industrial hydraulic system.** Level your coach with the push of a button.

**Automotive style Kodiak® disc brakes.** Limited lifetime warranty; smoother stopping; shorter stopping distance; low maintenance cost.

**Heavy duty H-rated 17.5" tires and aluminum eight-bolt wheels.** Heavier load capacity. Special tread pattern to dissipate heat. Tires are regroovable for miles and miles of safe use. Wheels are lightweight and will not rust.

**SeeLevel tank monitoring system.** Uses sonar to provide instant and accurate readings of all tanks.

**ASA Voyager® 270 camera system.** For better RV maneuvering and visibility on the road, the ASA Voyager® 270 camera system features a three-camera bird's eye view, turn signal triggers and audible blind spot alerts.

**Ghost Audio.** The new transducer audio system brought exclusively to DRV through a partnership with ASA Electronics. Ghost Audio is powered by Bongiovi DPS tuning software to provide impressive sound without a visible speaker. Instead, hidden transducers attached to the back of walls transform them into a sound system that fills the entire coach with high-fidelity audio.



## Structure

Custom engineered and tested 15" triple steel box tube chassis. Super strong foundation to build a lasting, high quality fifth wheel.

All-weather heavy duty aluminum floor system. The floor is screwed and bolted together and will not rot over time. We also refuse to use staples which eventually work up through the floor covering.

R-29 insulated frame floor system with three weather barriers. Warm floors for extended or full-time use; keep out condensation.

Slide floors will feature a water-resistant composite subflooring, which is lighter than traditional plywood and offers superior adhesion and durability against moisture. This lightweight material also contributes to improved fuel efficiency and allows for more cargo capacity.



## Refinements

Conveniently located wall switches control all lighting. Fingertip control of all task and decorative lighting.

Overhead LED room lighting on dimmer switches. Personal light control.

Designer raised panel cabinet doors and soft-close drawers and doors. Optimal storage; residential look; residential function.

*NOTE: Some features shown are exclusive to specific makes and models. Please review the complete Standards and Options list for availability.*

## Livability

Screwed and glued construction. Solid; 16" o.c. stud spacing.

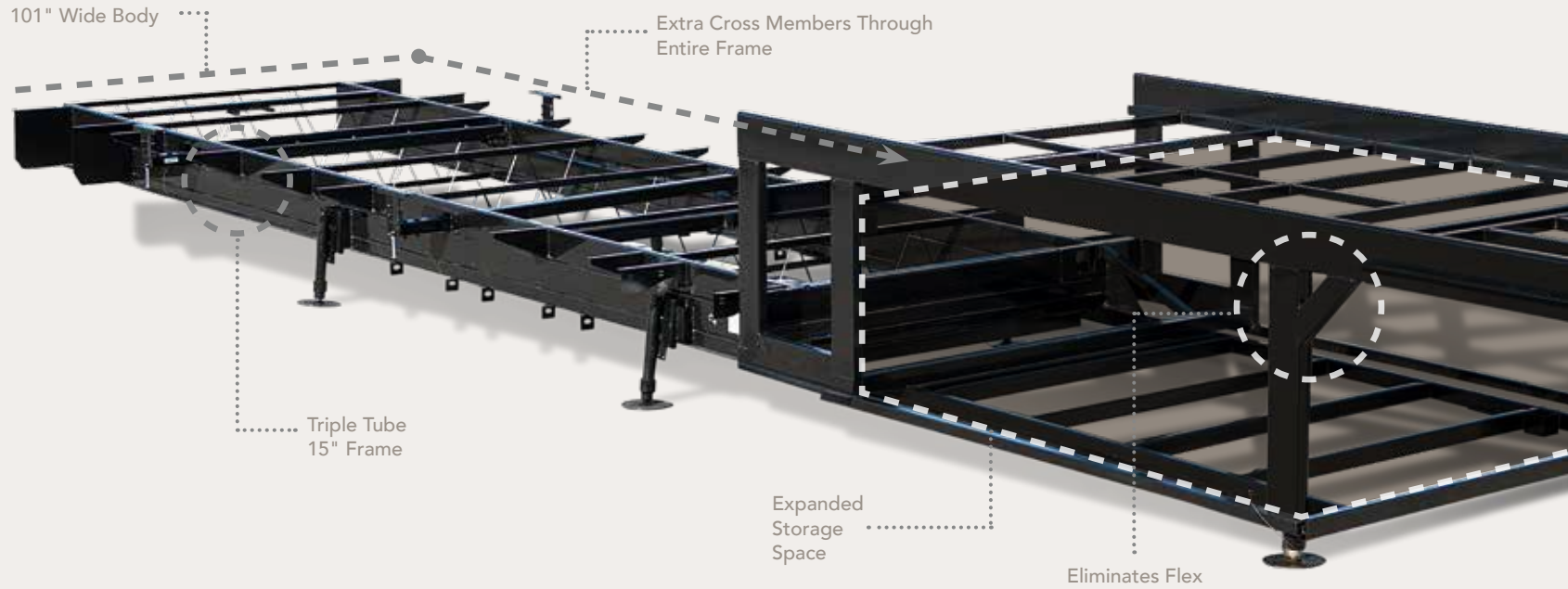
3.25" aluminum framed walls with R-16 insulated rating. Exclusive foam core vapor barrier. Lightweight; lower heating and cooling cost; noise reduction; eliminates chance of condensation.

Radiused aluminum roof rafters on 16" centers. More space; more insulation; improved water run-off; maximum load capacity per square foot.

R-25 insulated roof system with plywood and rubber or fiberglass covering. Improved weather barrier; sound deadening; low maintenance; lower heating and cooling costs.

Soft touch interior ceiling. Sound proofing; easy to clean; extra insulation.





Stacked triple-tube steel frame for 15" of maximum strength; the largest foundation on any fifth wheel in the industry.



Pinless hydraulic jacks are mounted at a 5-degree angle for maximum stability.



Commercial hydraulic rack & pinion slide-outs. All gear boxes are located inside the frame for the ultimate weather protection.



Residentially hung sidewalls are carriage-bolted into the floor for solid construction and superior strength.



R-16 residential insulation completely surrounds all of our walls and slides. Best insulation in the industry and eco-friendly!



## Solid Box Steel Frame

---

The foundation is the most important part of your home. It needs to be strong, reliable and able to last the test of time. DRV's custom-engineered 15" triple box tube frame measures 101" wide – the largest, most rigid fifth wheel frame in the industry. This design eliminates flex around the pin box and allows us to frame even the upper deck with steel to open up the storage compartment, providing you with space to fit all your personal belongings.

## DRV 6-Jack Level-Up System

---

Designed by DRV, our 6-jack level-up system provides quick and easy leveling and the strength to stabilize the coach when set up.



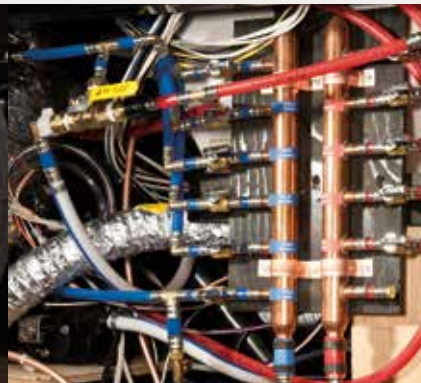
Our 3 1/4" walls are the thickest in the industry, giving you maximum insulation from noise and weather. The exclusive foam core vapor barrier eliminates condensation.



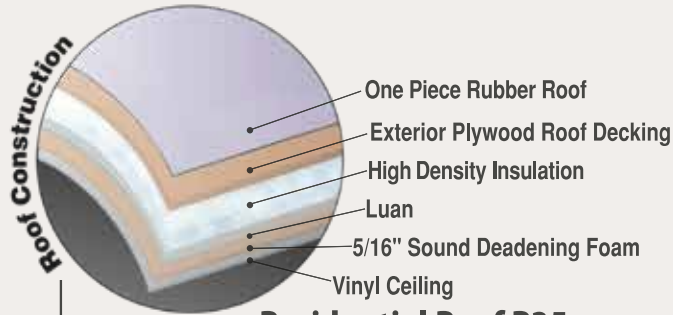
Commercial E-Z Lube® hubs surrounded by 8 large 5/8" stud bolts and standard automotive disc brakes round out the safety features of every DRV unit.



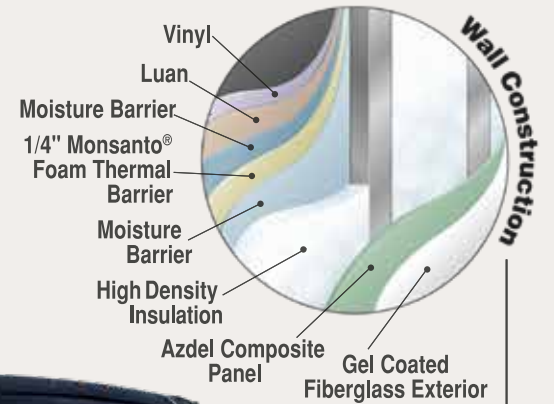
Heavy-duty 17.5" tires provide increased load capacity while staying cool on long hauls. We use truck tires, not RV tires, to ensure better performance and peace of mind.



A copper water manifold comes standard, ensuring equal water pressure throughout your home. And each water line is clearly labeled and has its own shut-off valve, allowing you to isolate a single line without shutting off water to the rest of your home.



**Residential Roof R25**



**Residential Sidewall R16**



**Residential Floor R29**



**All Season Thermal Pack with High Density Insulation**

Standard on all Suites

## Reliability

---

- High pressure hydraulic lines with metal fittings
- Individual push-button slide room controls
- Industrial stabilizer jacks located and wind tested to provide maximum stability
- Heavy gauge UL copper wiring
- Residential copper water manifold
- Reliable LED lights
- Convenient lights at all exterior service locations
- Gel coat fiberglass walls and exterior doors
- Plywood roof decking
- Extra sound proofing in floor, walls and roof
- Ultra quiet Trio Airflow A/C System
- Automotive disc brakes
- Furnace return air replaceable filter
- Oversized basement storage doors with gas lift cylinders
- Custom painted exterior
- Tough-skin, specially coated rock guard



## Standards

**Frame/Running Gear:**

- 17 1/2" H-Rated Re-Groovable Tires
- Heavy Duty Grease Bolt Shackles w/Bronze Bushing
- Automotive Style Disc Brakes
- Heavy Duty 8,000 Lb. Rated Axles
- Commercial Grade EZ Lube Hubs
- 15" Triple Stacked Box Tube Frame
- 101" Wide Body
- Industrial Hydraulic System for Jacks & Lower Level Slides
- Electric Bedroom Slide
- Slide Outs w/Select Push Button Controls
- Pinless, Industrial Hydraulic Front Landing Jacks at 5° Outboard Angle

**Construction: Floor**

- 3" Thick Floor
- 14" O.C. Floor Aluminum Floor Joists
- Screwed & Glued Joist Construction
- 5/8" Tongue & Groove Plywood Flooring
- Residential Perimeter Heating
- Residential Rated R29 Formaldehyde Free Insulation

**Construction: Walls/Slides**

- 3 1/4" Thick Walls/Slides
- 16" O.C. Stud Spacing
- Screwed & Glued Aluminum Stud Construction
- 1/4" Monsanto® Fome-Cor Vapor Barrier (Eliminates Condensation)
- 1/4" Thick High Gloss Gelcoat Fiberglass
- Azdel OnBoard Composite Panels
- Residential Rated R16 Formaldehyde Free Insulation
- Composite Slide Floors

**Construction: Roof**

- 16" O.C. Rafter Spacing
- Residential Rated R25 Formaldehyde Free Insulation
- 1/2" Plywood Roof Overlayment
- Tuff-Flex Roof
- Soft-Touch Vinyl Ceiling, Including Interior Slide-Out Ceilings

**Exterior:**

- Straight Roof Line w/8' Tall Interior Slide Out Height
- High Gloss Gelcoat Fiberglass
- High Gloss Gelcoat Fiberglass Molded Caps

- Custom Painted Exterior w/Clear Coat
- Frameless Tinted Safety Glass Windows
- LED Back-Up Lights
- Commercial LED Exterior Clearance Lights
- Front Cap Turn Signal
- LED Docking Lights
- Dual 78" Entry Door
- Metal Slam Door Compartment Latches
- Extra Thick Compartment Doors w/Gas Struts
- Motion Sensor LED Lights in Basement
- Custom Enlarged Control Center w/LED Lighting
- Lend-a-Hand Exterior Grab Handle
- Power Awning w/Aluminum Weather Shield (Over Both Entry Doors)
- Water Pump Switch at Outside Hookup Center

**Systems/Tanks:**

- 50 Amp Service w/Detachable Cord
- 80 Amp 12 VDC Converter
- 100 Gal. Fresh Water Tank
- 75 Gal. Grey Water Tank w/Power Flush
- 50 Gal. Black Water Tank w/Power Flush
- SeeLevel Tank Monitoring System on All Tanks

- Residential Type 1/2" PEX Water Lines
- Exclusive Copper Water Manifold w/Individual Shut-Off Valves
- Whole House Water Filtration System
- Multi-Switch Water Bypass System
- Slide Out Propane Tray w/Dual 40 Lb. Tanks
- 12VDC Battery on Pull Out Tray
- On Demand Water Heater
- 40,000 BTU Furnace w/Custom Plenum
- Residential 5 Duct Heating System w/6" Ducting
- Forced Heat Ducting to Tanks/Water System
- Fully Ducted A/C System w/Cold Air Return
- Triple 15,000 BTU Low-Profile A/Cs
- Solar Prep
- HD Roof Satellite Prep for Dual DVR Receivers
- HD Ground Satellite & Cable Prep
- HD TV Antenna

**Interior: Luxury Living Room/Dinette**

- Hand Laid Vinyl Floor Tile
- Plush Residential High Durability Carpet
- Solid Hardwood Cabinetry

- Interior Ceiling Fan (some models)
- Solid Hardwood Fascia Trim Around Slide Outs
- Solid Hardwood Cabinet Stiles (Pocket Drilled/Screwed)
- Concealed Soft-Close Cabinet Door Hinges
- Raised Panel Cabinetry
- Soft-Close Full Extension Metal Drawer Guides
- LED Interior Ceiling Lighting on Dimmer Switches
- Utility Closet w/Coat Storage & Centralized Control Station
- Custom Hardwood Dinette Buffet w/Solid Surface Top (Some Models)
- Dinette Table w/Hidden Leaf Extension (Some Models) (2) Hardwood Dinette Chairs w/Fabric Accent (Some Models)
- Crown Molding Throughout
- HD Wiring Throughout

**Interior: Gourmet Kitchen**

- 20 Cu. Ft. Residential Stainless Steel French Door Refrigerator
- Residential Pull-Out Pantry Storage Solutions
- Pull-Out 13 Gal. Garbage Can
- Stainless Steel Convection/Microwave
- Kohler Residential Pull-Down Faucet



- Kohler Brand Residential Workstation Sink
- Pullout Pantry Organizer System (some models)
- Pullout Undersink Storage Caddy
- High Polished Solid Surface Countertops
- Residential Style Stainless Steel Range
- Lighted Pantries & Kitchen/Bathroom Toe Kicks

### Interior: Master Bath/Hallway

- Hardwood Steps with Woven Insert
- Hand Laid Vinyl Tile Throughout
- Washer/Dryer Prep
- Heat & A/C Ducting in Bathroom
- Maxxair® Fan in Bathroom
- One Piece Fiberglass Shower
- Sky-Light Over Shower w/LED Pot Light
- Macerator Toilet (Some Models)

### Interior: Master Bedroom

- Custom Walk-in Front Closet w/Built in Dresser (Most Models)
- Custom Hardwood Wardrobe Doors
- King Bed Suite 72" x 80" w/Innerspring Mattress
- Full Storage Under Bed Base
- 32" TV
- Dimmable Over the Bed

Reading Lights on Separate Switches

- Vanity Slide

### Garage:

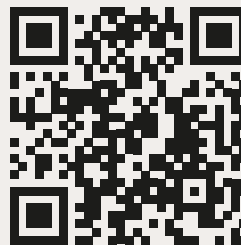
- Industrial Metal Overhead Cabinetry
- LED Lighting
- 50" LED HD TV
- Touch Screen/Blue Tooth Garage Audio/Ent. System
- Dual 30 Gal. Fuel Tanks w/Fuel Pump & Fill Station

### Full House Package (Forced Option):

- 55" LED TV & Home Theatre Package
- 32" LED Bedroom TV Package
- 50" LED TV Garage
- Garage Ent. System w/Touch Screen
- 17 1/2" H-Rated Spare Tire
- Lippert On-The-Go Ladder Prep
- Frameless Thermopane Windows
- Dual Door 4-Step Entry

### Executive Package (Forced Option):

- MCD Day/Night Roller Shades in Living Spaces
- MCD Night Shades Only in Bedroom & Bathrooms
- Built-In Fireplace
- 1000W Inverter w/Dual 6V Batteries
- Maxxair® Fan w/Rain Sensor - Bathroom
- Maxxair® Fan w/Rain Sensor - Kitchen
- Power Management System
- Six Point Hydraulic Leveling System
- One Touch Auto Leveling
- Keyless Entry Door (Both Doors)
- Onan 5.5 Gasoline Generator /Auto Gen. Start



SCAN TO WATCH  
THE FULL HOUSE  
BRAND VIDEO

## Options

### Cabinets (Standards):

- Chai Hickory
- Italian White
- Toffee Grove

### Décor (Standards):

- Invoke

### Counters (Standards):

- Aurora Ramo

### Interior:

- Theatre Seating Recliners
- Toffee Grove Folding Chair
- Solid Surface Bartop w/Storage (Some Models)

### Entertainment:

- 32" LED HDTV Outdoor Ent. (Some Models)
- Winegard® Trav'ler HD Auto Satellite

### Bedroom:

- Queen Bed Suite

### Garage:

- Electric Drop Down Sofa/Bed
- Electric Drop Down Bed
- Fold-Up Outdoor Patio
- 3 Season Patio Door
- Removable Table

### Systems/Vents/Fans:

- Heat Pump
- Maxxair® w/Switch Control – Garage
- Splendide® Front Load 2 Piece
- Splendide® XC 2,100 Combo
- ASA iN-Command®

### Construction/Running Gear:

- Power Cord Reel (Some Models)
- HBA Brake Cam (To be Ordered Special for Customers w/GM Trucks)

### Exterior/Awnings:

- Slide Toppers
- Power Dinette Slide Awning w/Weathershield
- Slide Out Storage Tray (36" x 90")
- Voyager 270 Camera System
- CSA

### Partial Body Paint (Standards):

- Glacier Bay
- Mystic Reserve
- Regal Heights

*This brochure is based upon the latest product information available at the time of printing. DRV reserves the right to make changes at any time to prices, colors, materials, equipment, specifications and models, and to discontinue models without notice or obligation. Color representations are as close as photographic/print reproduction will allow. All specifications are approximate and dimensions nominal. Text and/or photos may represent equipment or décor items which may not be included as a standard item in your model of choice.*

# WELCOME TO MyDRV



**MyDRV** is a mobile app that allows customers to manage their RV, monitor warranty information, and track sales and past orders. You can also access a robust library of how-to content, checklists, and other valuable resources, right from your phone.

You can manage your RV online or by downloading the mobile app.

## CREATE YOUR ACCOUNT

Download the mobile app or activate online.

\*\*\*\*\*@gmail.com

\*\*\*\*\*

**STEP 1**  
Create an account or sign in to get started.

\*\*\* \*\* 12345

10/14/2021

**STEP 2**  
Verify your VIN number and purchase date.



**STEP 3**  
Verify your email.





## DRV Factory Tours

DRV Luxury Suites is open for factory tours, and we cannot wait to take you through the DRV build process and give you an in-depth look at the DRV Difference.

DRV factory tours are extremely important to our success and telling our story. Factory tours are a personal way to get to know our company and see many unique construction features we offer standard in all our products. We take pride in our quality and our construction and will spend as much time as we needed to make sure we answer all your questions. Factory tours are held **Monday, Wednesday, and Friday at 10 a.m. EST**, so please call ahead to schedule your tour.

# Freedom is calling.

Full House

2024



## Peace of mind from coast to coast.

Relax. Your new DRV fifth wheel is backed by the best customer service on the road. Whether you need a mobile tech, warranty work or just a little help figuring out your electronics, we'll make it right. Anywhere in America. *That's true freedom.*

[DRVSuites.com](https://www.drvsuites.com)  
*Destination freedom.*



[www.suitesowners.com](https://www.suitesowners.com) | Be sure to join our outstanding DRV owner's club!

0160 W 750 N | PO Box 235 | Howe, IN 46746  
Factory tours by appointment. Please call 260-562-1075 for specifics.

