

XLR TOY HAULERS

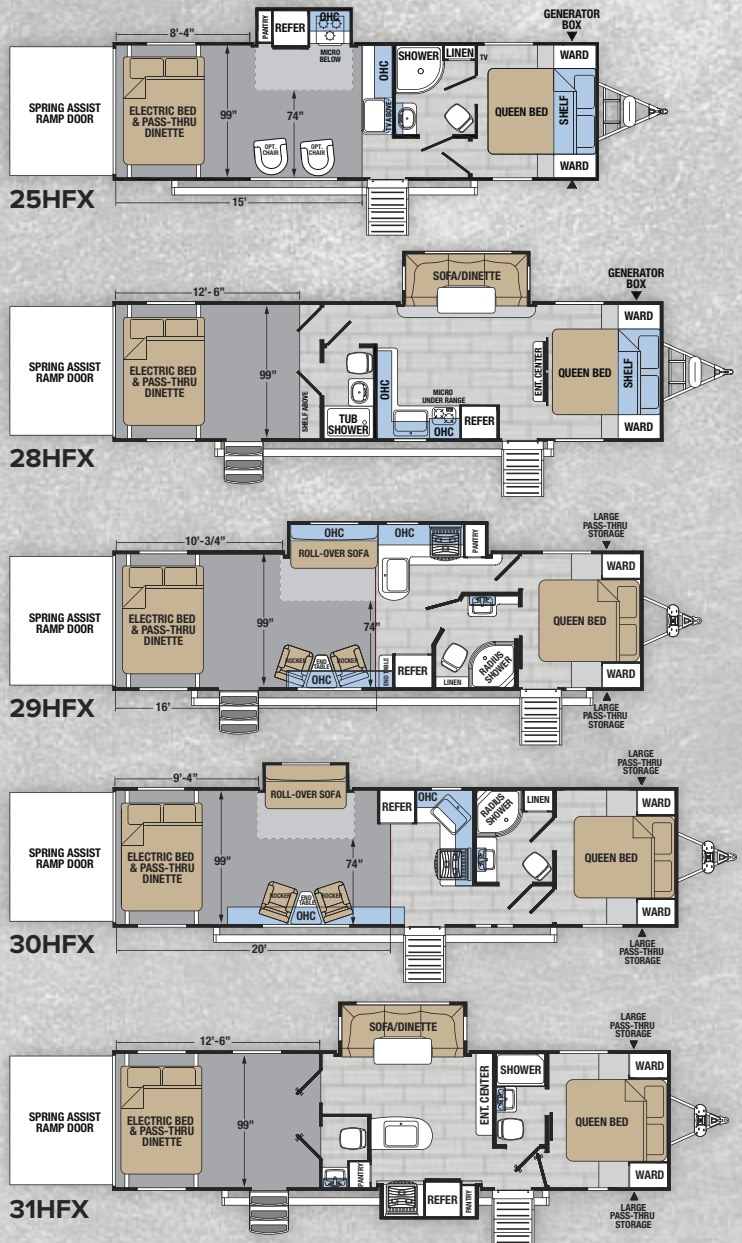
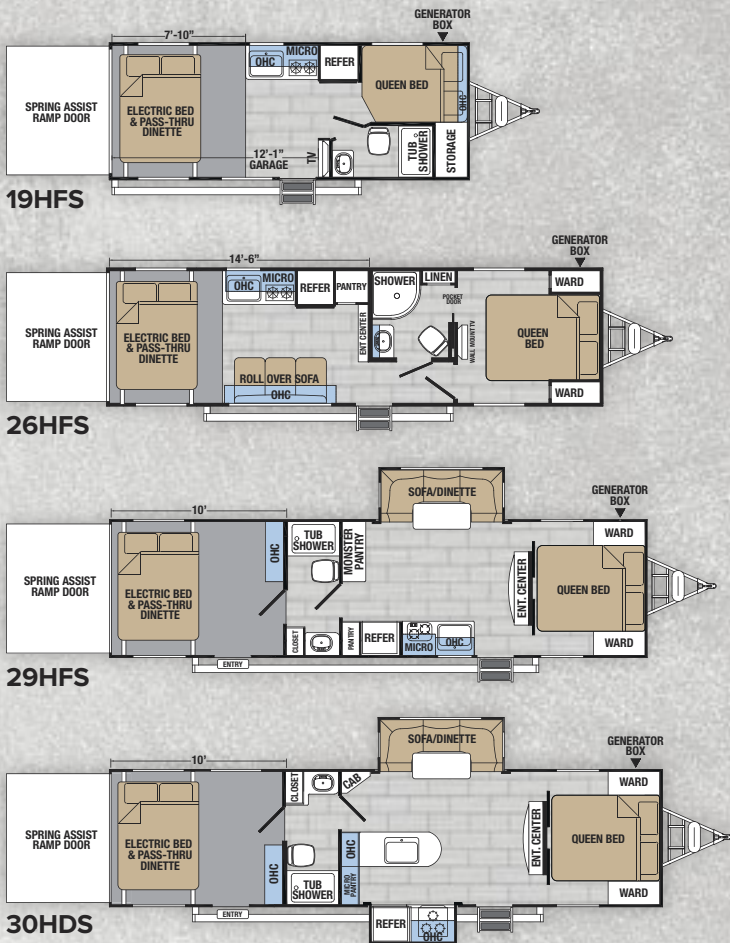


HYPER LITE



96" WIDE TRAVEL TRAILERS

102" WIDE BODY TRAVEL TRAILERS



HALF-TON TOWABLE

Available on 29HFS, 30HDS, 28HFX & 31HFX

360° See XLR videos and virtual tours at www.forestriverinc.com/XLR



HYPER LITE

STANDARDS & OPTIONS

DÉCOR

- Gunmetal
- Mica

EXTERIOR

- Power Tongue Jack
- Solar Power Inlet
- Backup Camera Prep
- Black Tank Flush
- 80% Tint Radius Safety Glass Windows
- 20# LP Bottles (2)
- 26" Radius Entry Door
- Exterior Marine Grade Speakers
- High Capacity Water Pump
- Battery Disconnect Switch
- Oversized Tank Capacities
- Two-Tone Painted Fiberglass Cap**

KITCHEN

- Grate Style Sink Cover
- Residential HPL Countertops
- Convection Microwave
- Three Burner Cooktop w/Glass Cover**
- 8 Cu. ft. Gas/Electric Refrigerator**

BATHROOM

- Skylight Over Shower
- Medicine Cabinet w/Mirror
- Porcelain Toilet
- Residential Glass Shower Enclosure**

INTERIOR

- Decorative Glass Cabinet Inserts (Kitchen Upper)
- Solid Core Cabinet Stiles
- Hidden Hinge Residential Cabinet Hardware
- Full Extension Ball Bearing Drawer Glides
- Large Panoramic Windows
- Upgraded Residential Furniture
- Hardwood Maple Cabinet Doors
- Dual Zone - USB/Bluetooth Sound System
- JBL Speakers

CONSTRUCTION

- Gel Coated Fiberglass Exterior
- One-piece Roof Membrane w/12 Year Warranty
- Ducted Roof A/C Distribution System
- Insulated Storage Compartment Doors
- Magnetic Storage and Entry Door Holdbacks
- Laminated and Insulated Rear Ramp Door
- Vacuum-bonded, Aluminum-framed Sidewalls
- Laminated, Insulated Slide End Walls and Roof
- Residential Wood Framed Main Floor
- 5" Radius Wood Framed Roof Rafter

BEDROOM

- Master Suite w/60" x 74" Queen Bed
- Solid Master Bedroom Passage Door
- Oversized Under-bed Storage
- TV and Cable Prep

OPTIONAL EQUIPMENT

- Off Grid Package 2 (4.0 Onan Generator)
- VIP Party Deck (No Awning)
- Recliners w/ Heat, Massage, & LED
- 32" Flat Screen LED TV

** Widebody Models Only

EXTENDED SEASON PACKAGE (Mandatory)

- 12V Heated Tank Pads
- Radiant Foil Insulation Technology - Roof and Underbelly
- MAXXAir Power Roof Vent - Main Bath
- Privacy Screen Wall
- Window Inserts
- Fully Enclosed Underbelly

ULTIMATE PACKAGE (Mandatory)

- Generator Prep and Mobile Fuel Station
- Solar Roof Prep
- Single Electric Bed w/Pass Thru Dinette
- 30AMP Service w/Transfer Switch
- MORRyde CRE 3000 Suspension Enhancement
- Upgraded Main Entry Step
- Upgraded Main Awning w/LED Lights
- Upgraded Main Entry Door w/Window and Friction Hinge
- Aluminum Wheels
- EZ-Lube® and Nev-R-Adjust® Axles
- Radial Tires w/Nitrofill & No Fuss Warranty
- Full Sized Spare Tire
- 15K BTU Ducted Roof A/C
- 5,000 lb. Rated Cargo D-Rings

96" WIDE TRAVEL TRAILERS

102" WIDE BODY TRAVEL TRAILERS

MODEL	19HFS	26HFS	29HFS	30HDS	25HFX	28HFX	29HFX	30HFX	31HFX
Hitch Weight (lbs.)	1226	915	1124	1314	1135	1500	1035	1265	1487
UVW (lbs.)	5272	6817	7282	7669	7813	8743	8483	8988	9608
Cargo Capacity (lbs.)	2528	2900	2642	2445	5322	4757	2752	4277	3307
Exterior Length	25'	32'-11"	35'-1"	36'-1"	33'-3"	37'-10"	35'-9"	38'-0"	37'-10"
Exterior Height	11'-2"	11'-2"	11'-2"	11'-2"	12'-4"	12'-4"	12'-4"	12'-4"	12'-4"
Exterior Width	96"	96"	96"	96"	102"	102"	102"	102"	102"
Fresh Water (gal.)	54	54	54	54	102	102	102	102	102
Grey Water (gal.)	32	60	63	63	60	60	60	60	80
Black Water (gal.)	32	30	32	32	50	50	50	50	50
Awning Size	14'	20'	20'	20'	18'	21'	20'	20'	20'

GVWR (Gross Vehicle Weight Rating) - is the maximum permissible weight of the unit when fully loaded. It includes all weights, inclusive of all fluids, cargo, optional equipment and accessories.

For safety and product performance do NOT exceed the GVWR.

GAWR (Gross Axle Weight Rating) - is the maximum permissible weight, including cargo, fluids, optional equipment and accessories that can be safely supported by a combination of all axles.

UVW (Unloaded Vehicle Weight)* - is the typical weight of the unit as manufactured at the factory. It includes all weight at the unit's axle(s) and tongue or pin and LP Gas. The UVW does not include cargo, fresh potable water, additional optional equipment or dealer installed accessories.

*Estimated Average based on standard build optional equipment.

CCC (Cargo Carrying Capacity)** - is the amount of weight available for fresh potable water, cargo, additional optional equipment and accessories. CCC is equal to GVWR minus UVW. Available CCC should accommodate fresh potable water (8.3 lbs per gallon). Before filling the fresh water tank, empty the black and gray tanks to provide for more cargo capacity.

**Estimated average based on standard build optional equipment.

Each Forest River RV is weighed at the manufacturing facility prior to shipping. A label identifying the unloaded vehicle weight of the actual unit and the cargo carrying capacity is applied to every Forest River RV prior to leaving our facilities. The load capacity of your unit is designated by weight, not by volume, so you cannot necessarily use all available space when loading your unit.

XLR Hyper Lite by Forest River

2421 Century Drive ■ Goshen, IN 46528 ■ E-mail: XLRinfo@forestriverinc.com

Phone: 574-642-0438 ■ www.forestriverinc.com/XLR

www.forestriveraccessories.com ■ #XLRtoyhaulers



Learn More
Scan this barcode using a QR Reader on your smart phone to learn more about Forest River.



A Berkshire Hathaway company.

www.ForestRiverBuyLocal.com

Actual towing capacity is dependent on your particular loading and towing circumstances, which includes GVWR, GAWR and GCWR, as well as adequate trailer brakes. Please refer to the Owners Manual of your vehicle for further information. All information contained in this brochure is believed to be accurate at the time of publication. However, during the model year, it may be necessary to make revisions and Forest River, Inc., reserves the right to make all such changes without notice, including prices, colors, materials, equipment and specifications as well as the addition of new models and the discontinuance of models shown in this brochure. Therefore, please consult with your Forest River dealer and confirm the existence of any materials, design or specifications that are material to your purchase decision. ©2019 XLR, a Division of Forest River, Inc., a Berkshire Hathaway company. All Rights Reserved. 1/19